

Rough Guide to ADP Specialist Interventions Subgroup

January 2014

Who this guide is for

This guide has been written as an introduction to the role and remit of the Specialist Interventions Subgroup (SISG).

It can be used by members of the Borders Alcohol & Drugs Partnership (ADP) or subgroups, specialist and generic staff who have an interest in the work of the SISG and members of the community.

What is the Specialist Interventions Subgroup (SISG)?

The SISG is a subgroup of the ADP and is a partnership of agencies and services involved in providing the essential care components required for supporting people with drug or alcohol problems to enable their recovery.

The subgroup provides representatives at an operational level with the opportunity to contribute to discussions on ADP strategies and delivery plans. This includes highlighting emerging problems, identifying gaps in service provision, discussing priorities for allocation of funding, and opportunities for revising service delivery to promote partnership working.

The Chair of the SISG has a seat on the ADP to facilitate two-way communication and ensure subgroup participation in agreeing priorities for action.

Membership consists of representation from the following organisations:

- Drug & Alcohol Specialist Services: Adults and Children's (voluntary, statutory and private)
- Criminal Justice Social Work Services
- Homeless Services
- Al-Anon
- Mental health services (voluntary and statutory services)
- NHS Borders Pharmacy

What does it do?

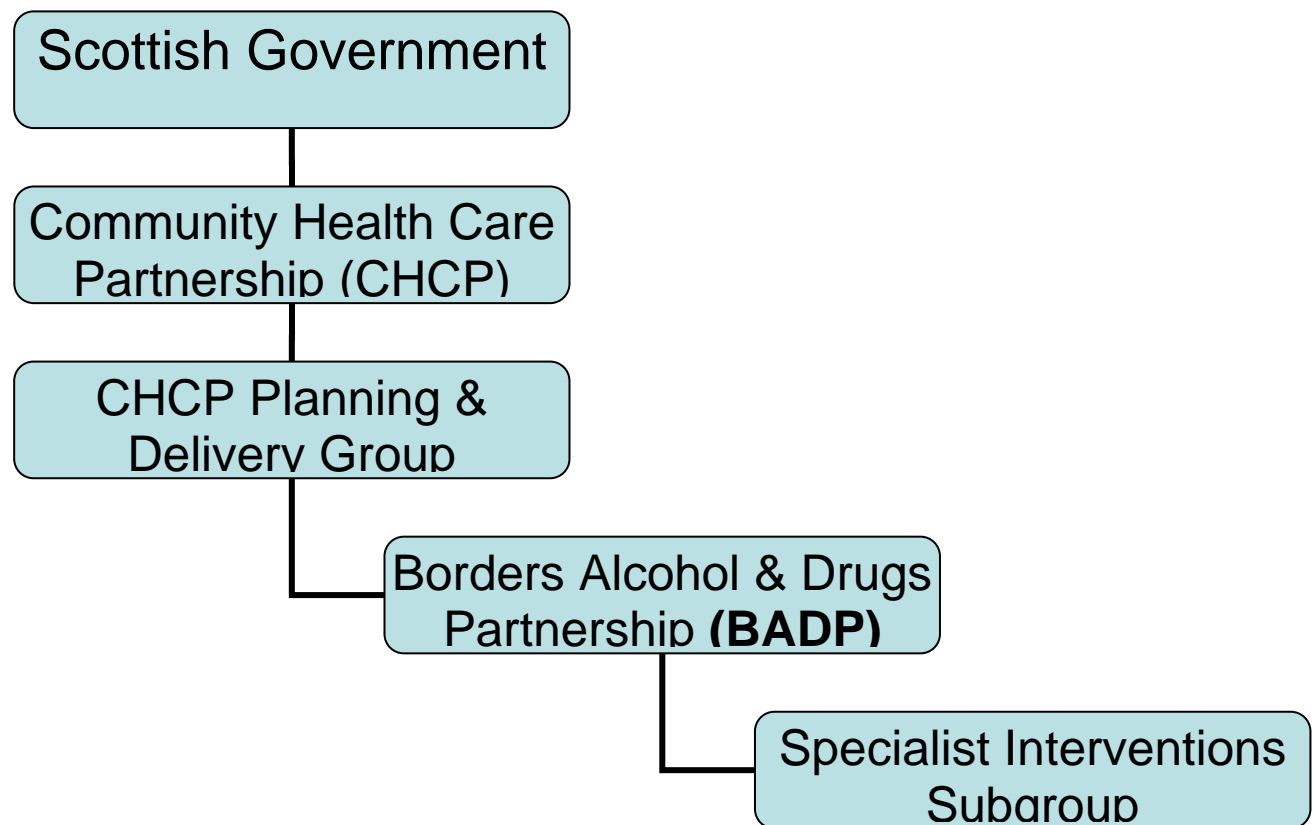
The priorities identified within the ADP Delivery Plan 2012-15 to inform the work of the SISG are:

- Ensure wide range of services available for those with or affected by alcohol or drug problems (young people & adults) including:
- Promote recovery in individuals (young people and adults) from alcohol and drug problems by:
- Delivering stepped care, recovery-focused, tiered approaches to alcohol and drug treatment and support.
- Ensuring stronger links with other forms of support that address individuals wider problems and life circumstances including peer support, mutual aid and self-help organisations.
- Development of improved mechanisms for service user, carer, and stakeholder involvement on an ongoing basis

From time to time small sub-groups of the SISG will form to take on particular tasks, for example during 2012-13 an Employability Group took forward some key tasks relating to mapping need and responses and improving partnerships.

The SISG aims to improve partnerships with specialist and universal service providers.

Diagram of accountability:



Further information

For more detailed information please contact the ADP Support Team on 01896 824535. The BADP Delivery Plan for 2012-15 can be accessed via www.badp.scot.nhs.uk