

Delayed Discharge / Planning for Winter

- Historical position of occupied bed days and delayed discharge
- Reasons for delay
- Recommendations for the winter plan for 18/19

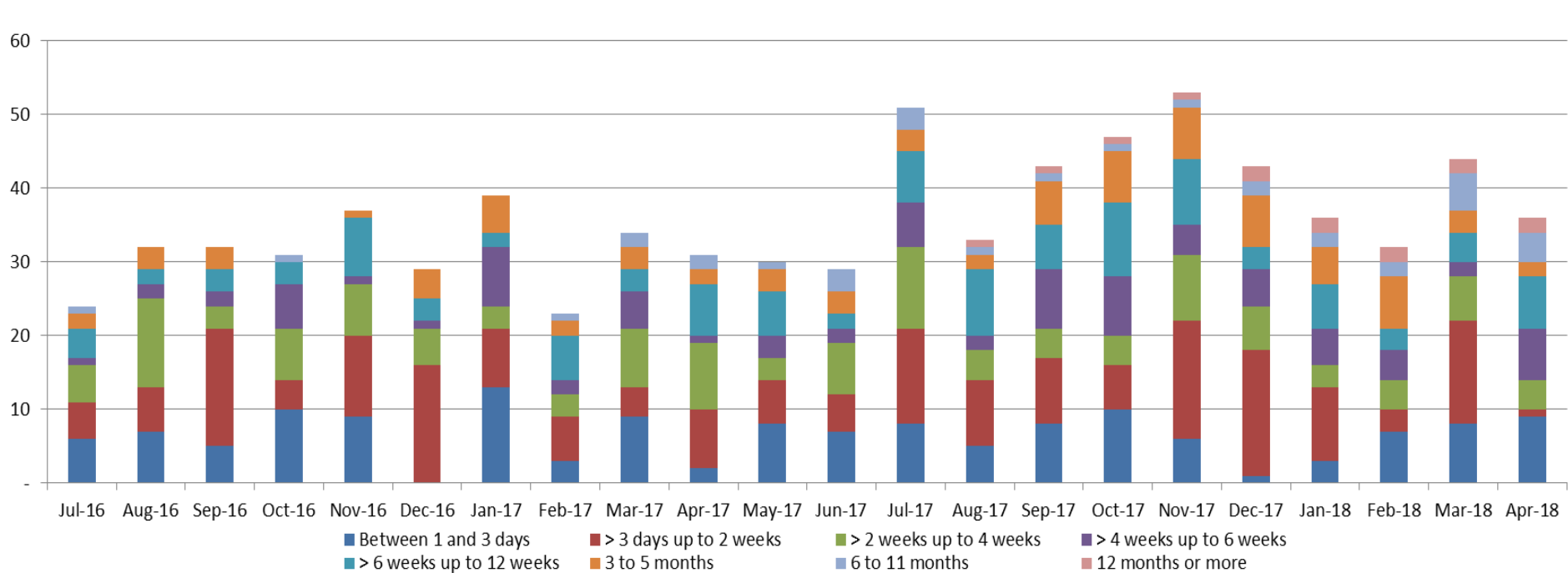


Scottish Borders
Health and Social Care
PARTNERSHIP

NHS Borders - Delayed Discharges

Length of Delay at Census Point

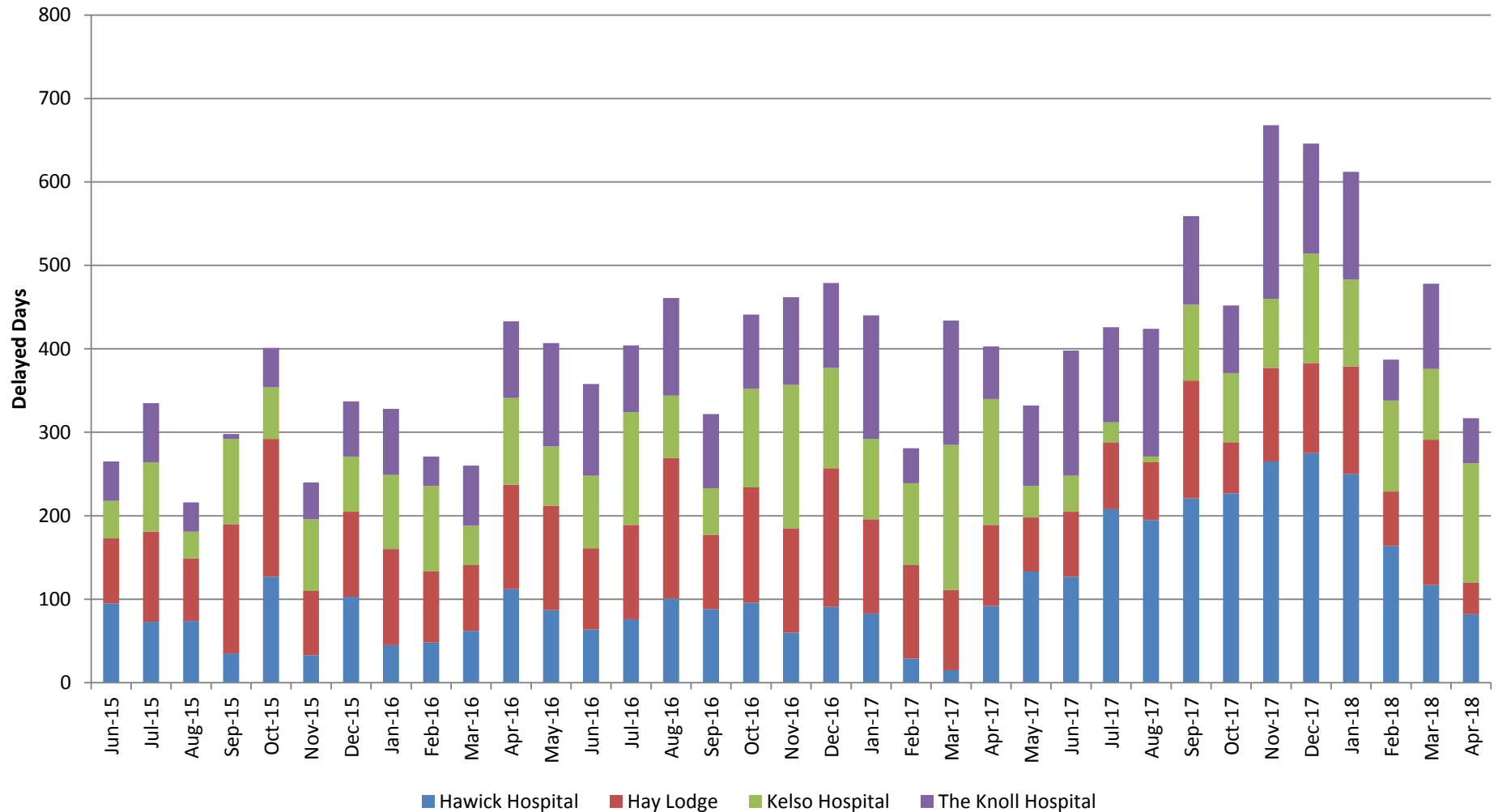
July 2016 – April 2018



NHS Borders - Delayed Discharges

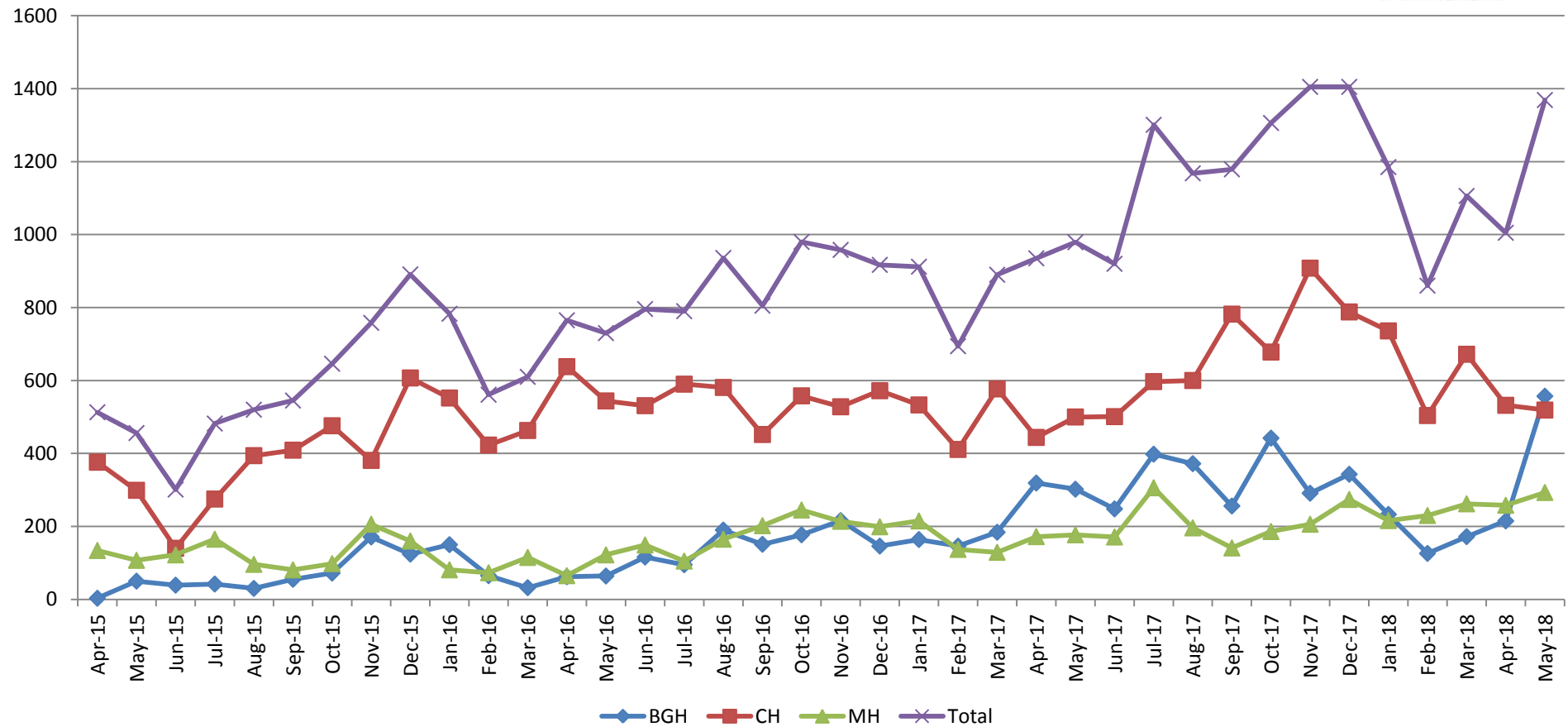
Delayed Days in Community Hospitals

June 2015 – April 2018



Delayed Occupied Bed Days

April 2015 – May 2018





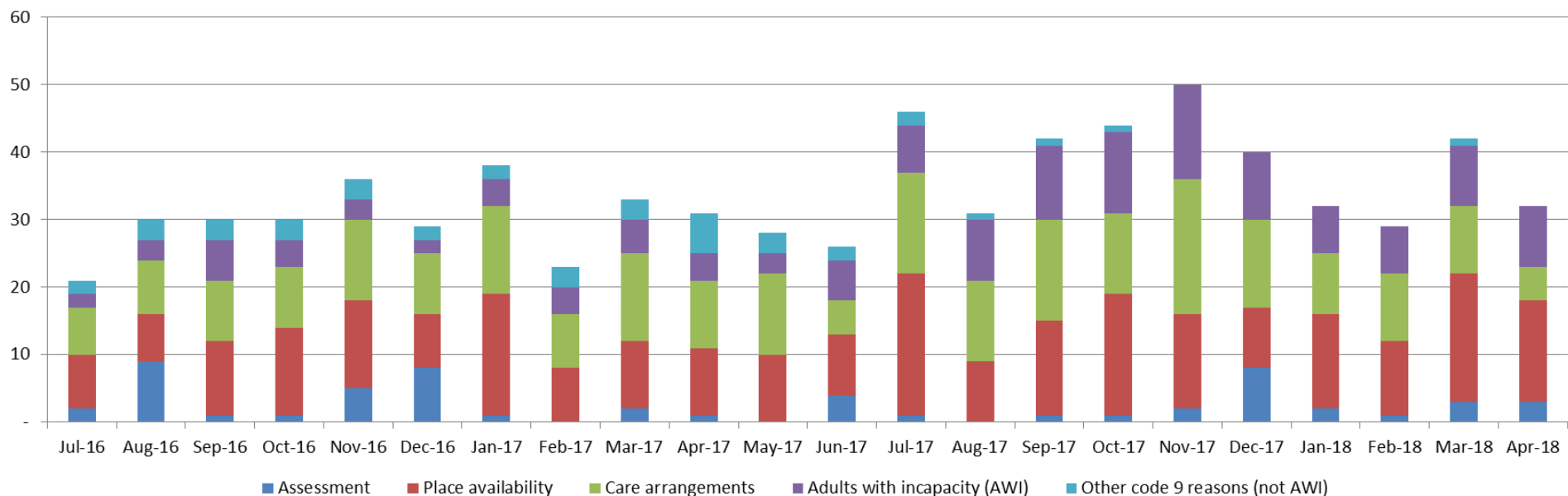
Scottish Borders
Health and Social Care
PARTNERSHIP

NHS Borders - Delayed Discharges

Reason for Delayed Discharge at Census Point

Excluding Patient & Family Related Reasons

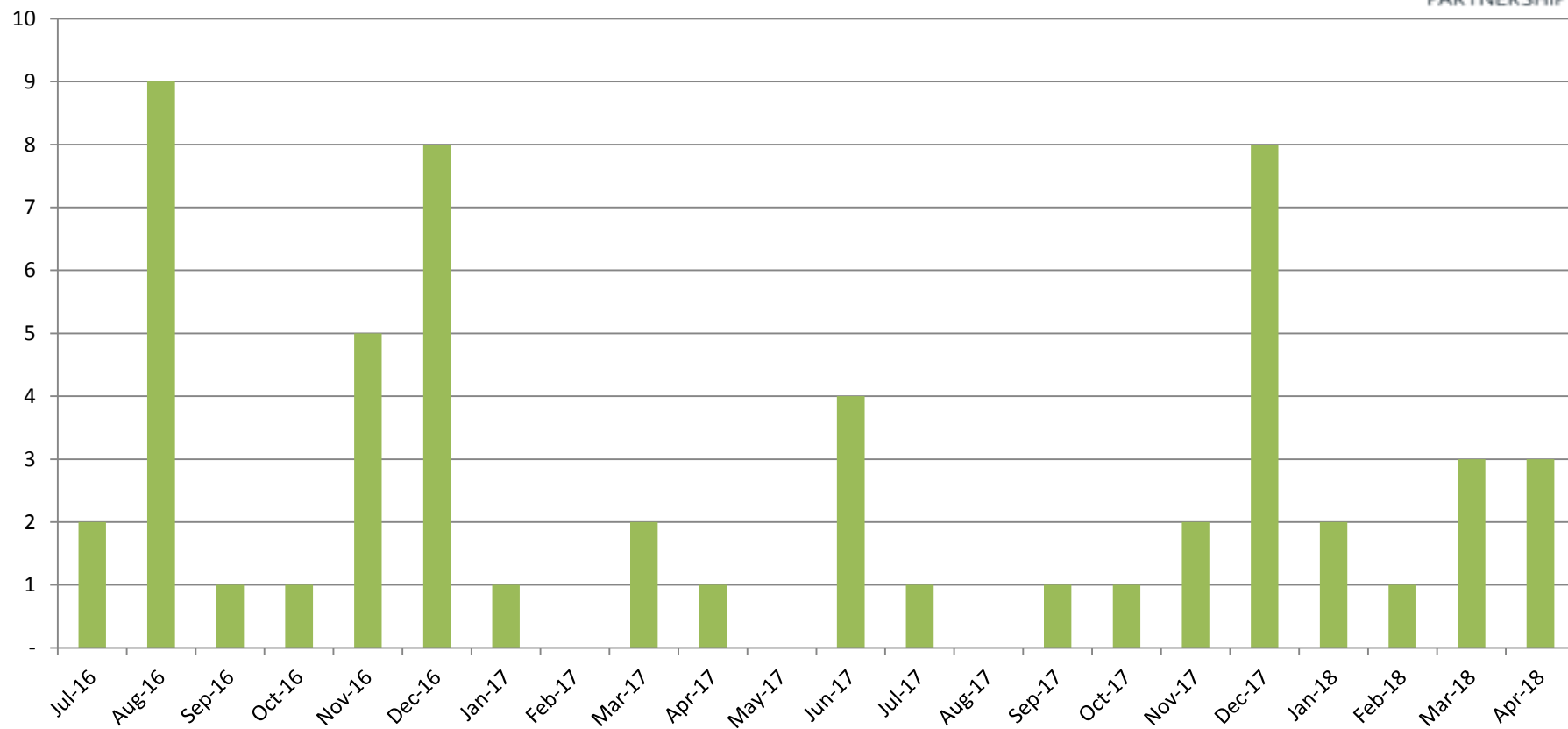
July 2016 – April 2018





Scottish Borders
Health and Social Care
PARTNERSHIP

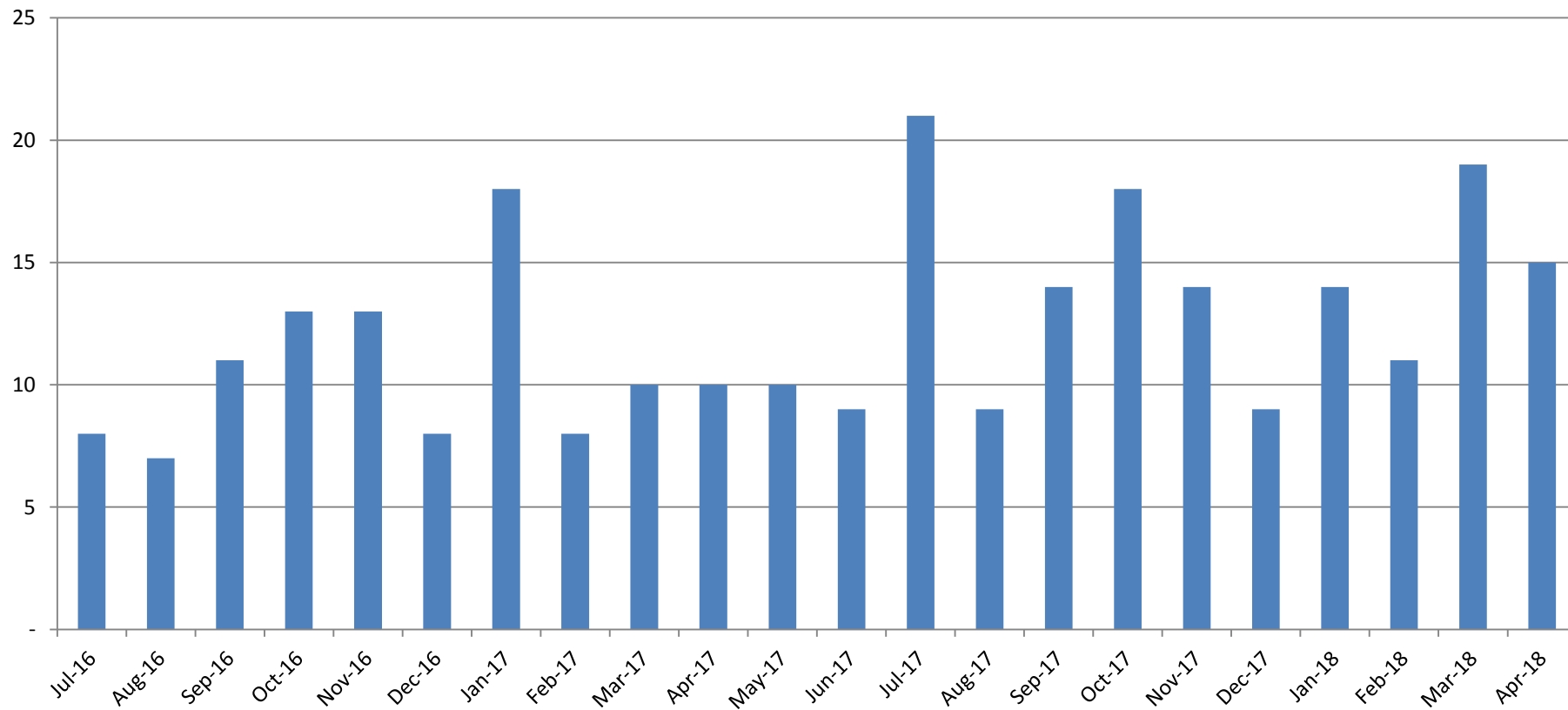
Reason for Delayed Discharge: Assessment





Scottish Borders
Health and Social Care
PARTNERSHIP

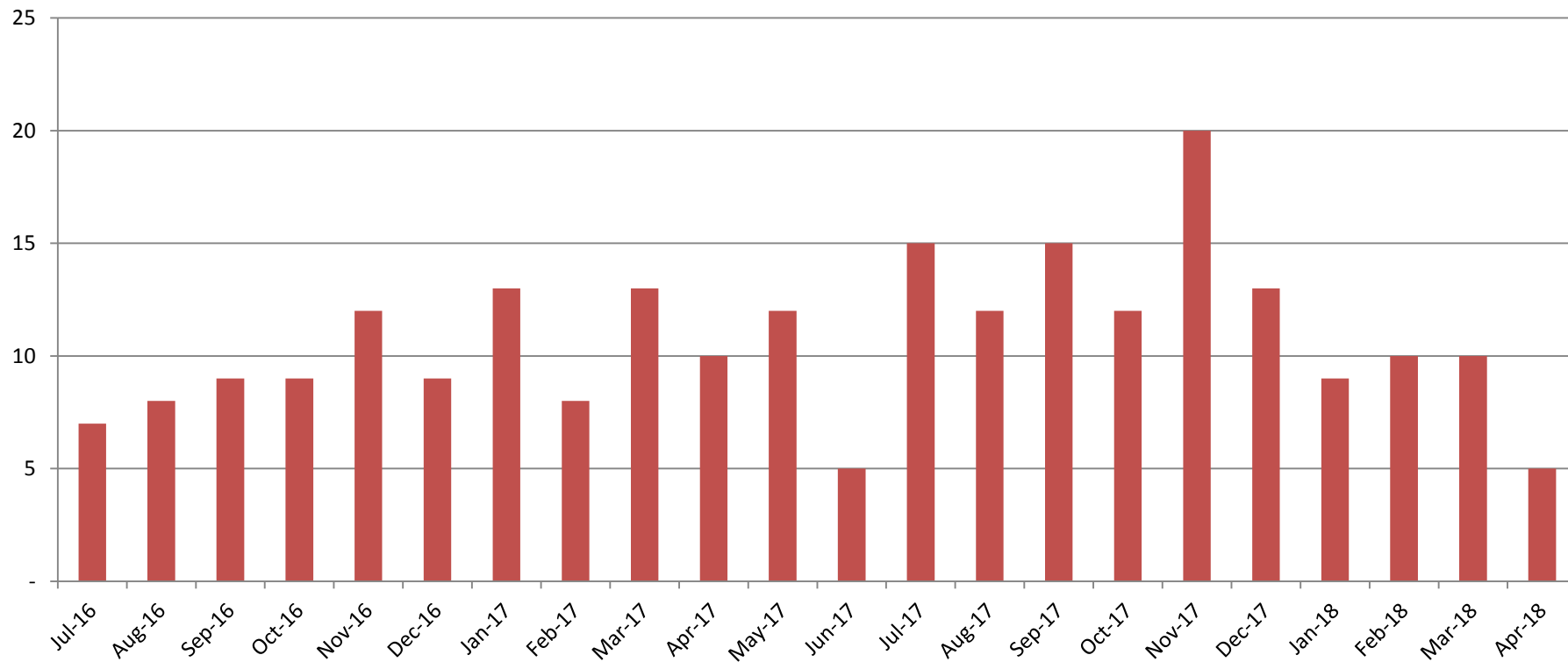
Reason for Delayed Discharge: Place Availability





Scottish Borders
Health and Social Care
PARTNERSHIP

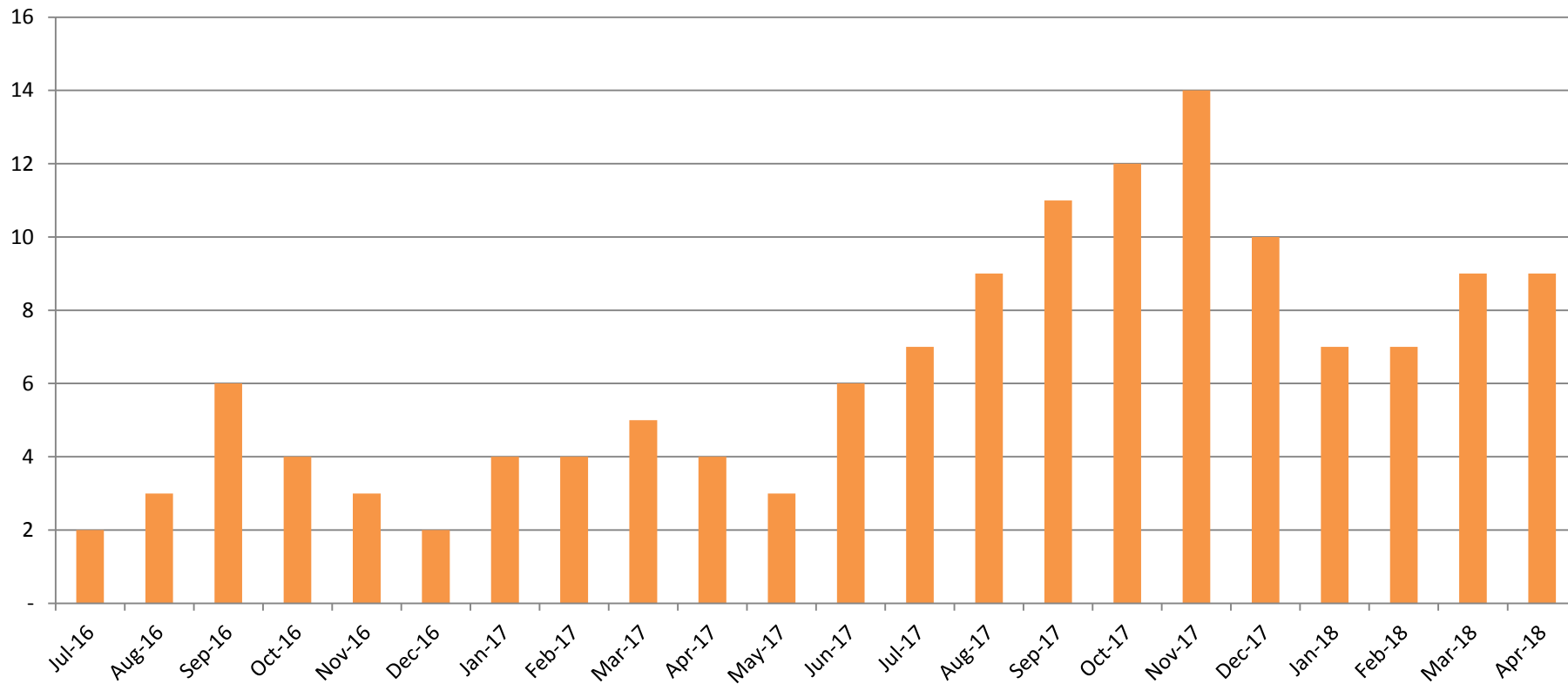
Reason for Delayed Discharge: Care Arrangements





Scottish Borders
Health and Social Care
PARTNERSHIP

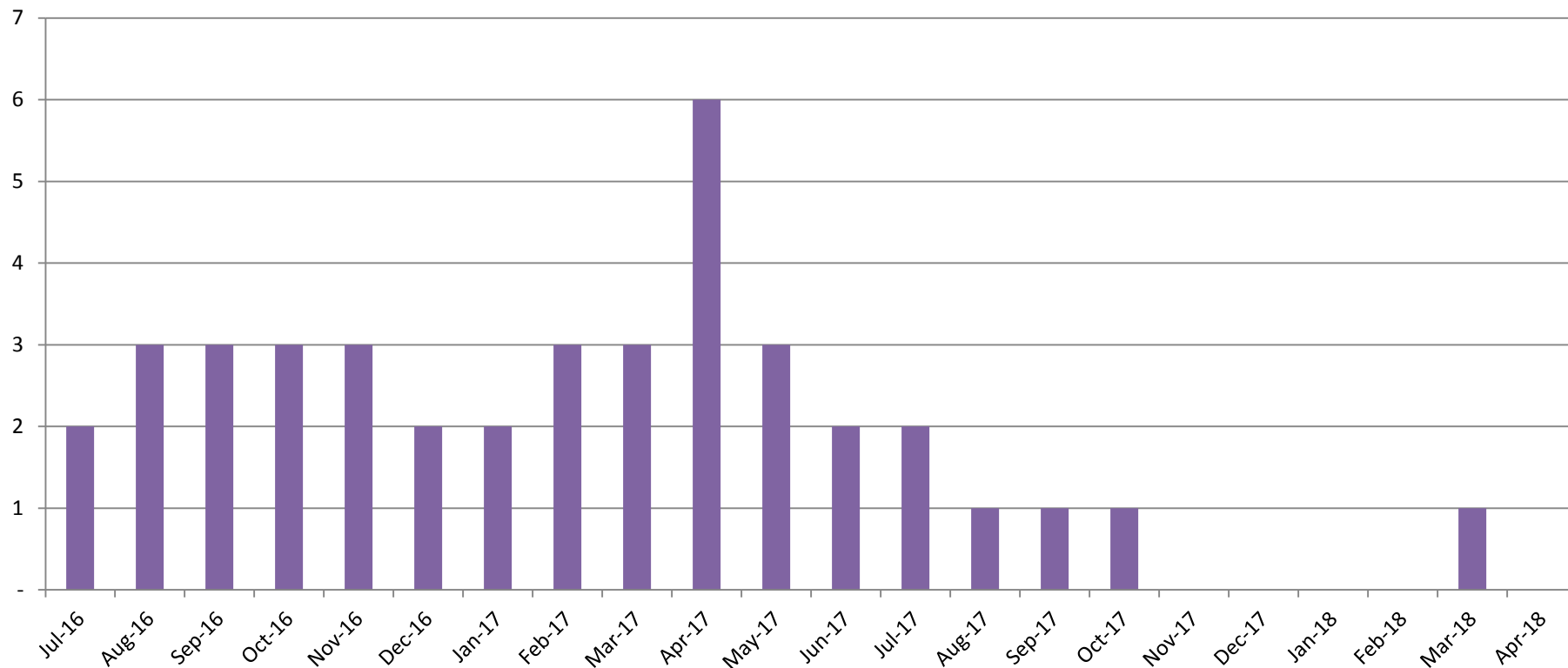
Reason for Delayed Discharge: Adults with incapacity (AWI)





Scottish Borders
Health and Social Care
PARTNERSHIP

Reason for Delayed Discharge: Other Code 9 Reasons (not AWI)



Re-commissioning Care Home Beds & Home Care Hours



- Work underway to identify level of resource required to maintain 85% capacity across BGH and Community Hospitals.
- Type of beds required identified through previous reports and analysis of delays and day of care audits.
- Negotiations underway to open an additional 17 beds for people with dementia requiring care.
- Review of care home contracts required to lead to a re-commissioning exercise for implementation in 18/19

Winter Plan 2018/19

Recommendations from last year

- Primary Care
 - Enhance BES access for the weekends
 - Ensure communications in place regarding availability of all services within primary care through the festive period and in times of poor weather conditions etc.
- Front Door
 - Support Rapid Assessment and Transfer, requires additional social service support
- Medical Surge
 - Ring fence AAU and protect ACU assessment area as well as treatment areas
 - Provide 7 day discharge, (Pharmacy, Equipment, Social Care, MDTs, Care allocation)
 - Introduce criteria lead discharge
- Elective
 - Provide effective surgical assessment unit
 - Offer pathways for IV therapies
- Discharge
 - Provide for dynamic daily discharge
 - Develop estimated time of discharge

Winter Plan Board for 18/19

Areas of additional focus;

- Step down and step up facilities to speed discharge and prevent admission.
- Enhancing the process of care allocation through “real time” processing of placement with availability
- Community Hospital admission process and discharge process to be improved
- Greater access to out of hours services
- More remote “attend anywhere” consultations with patients
- Provide additional health care at home supporting discharge