

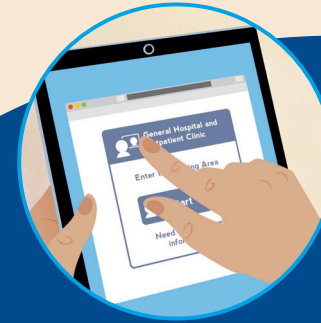
## More Information

Ask your healthcare provider if they offer NHS Near Me and if it would be suitable for your appointment.

NHS Near Me is powered by



## What is NHS Near Me?



**Appointments by video**  
from your home or wherever  
is convenient for you

## What is NHS Near Me?

NHS Near Me is a video consulting service for clinical appointments. NHS Near Me appointments can take place from any convenient, confidential space. Your healthcare professional will see you via video link.

## How do I get an appointment?

NHS Near Me appointments are booked just like many other clinical appointments and you will normally receive a letter, card or a phone call in advance of the date and time.

You may be asked by your clinician if you would like your next consultation by NHS Near Me, or you can ask if it would be possible when booking an appointment.



## Benefits of NHS Near Me

Benefits of NHS Near Me include reduced travel, reduced time away from home/work/school, and making it easier to have someone with you for support at your appointment that would not have been able to travel with you to hospital or to your local clinic or GP practice.

## Video call security

NHS Near Me uses secure video consulting, which has been approved as private and confidential by NHS Scotland. NHS Near Me calls **are not recorded**.



## Is NHS Near Me right for me?

NHS Near Me is appropriate in many cases, but is not for every person or appointment. NHS Near Me cannot be used if you are having a procedure or hands-on care. Your healthcare professional can advise whether NHS Near Me is suitable for you.

You may also prefer to travel to hospital or your local clinic or GP Practice for some appointments. That's fine too. You can opt in or out of using NHS Near Me.

## NHS Near Me at home

For NHS Near Me at home, you need:

- A reliable internet connection (broadband or mobile).
- A device for making video calls, such as tablet, smart-phone or computer with web-cam.
-  Google Chrome browser or  Safari on Apple products.

If this is the first time you are using NHS Near Me, we suggest that at least 30 minutes before the time of your appointment, you go to the website address given for your appointment and follow the on screen instructions.

