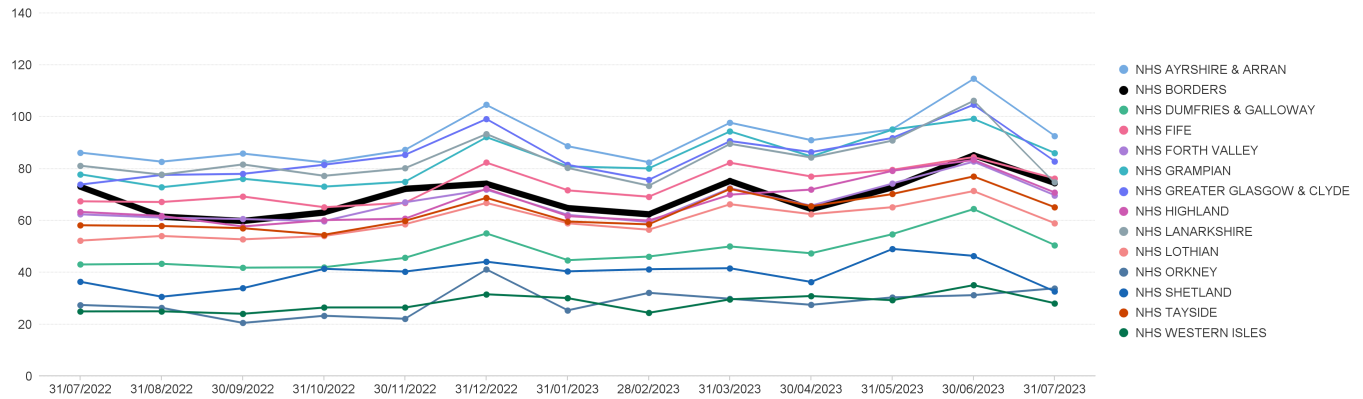


All UCF Claims - Items per '000 List Size by Board, up to July 2023

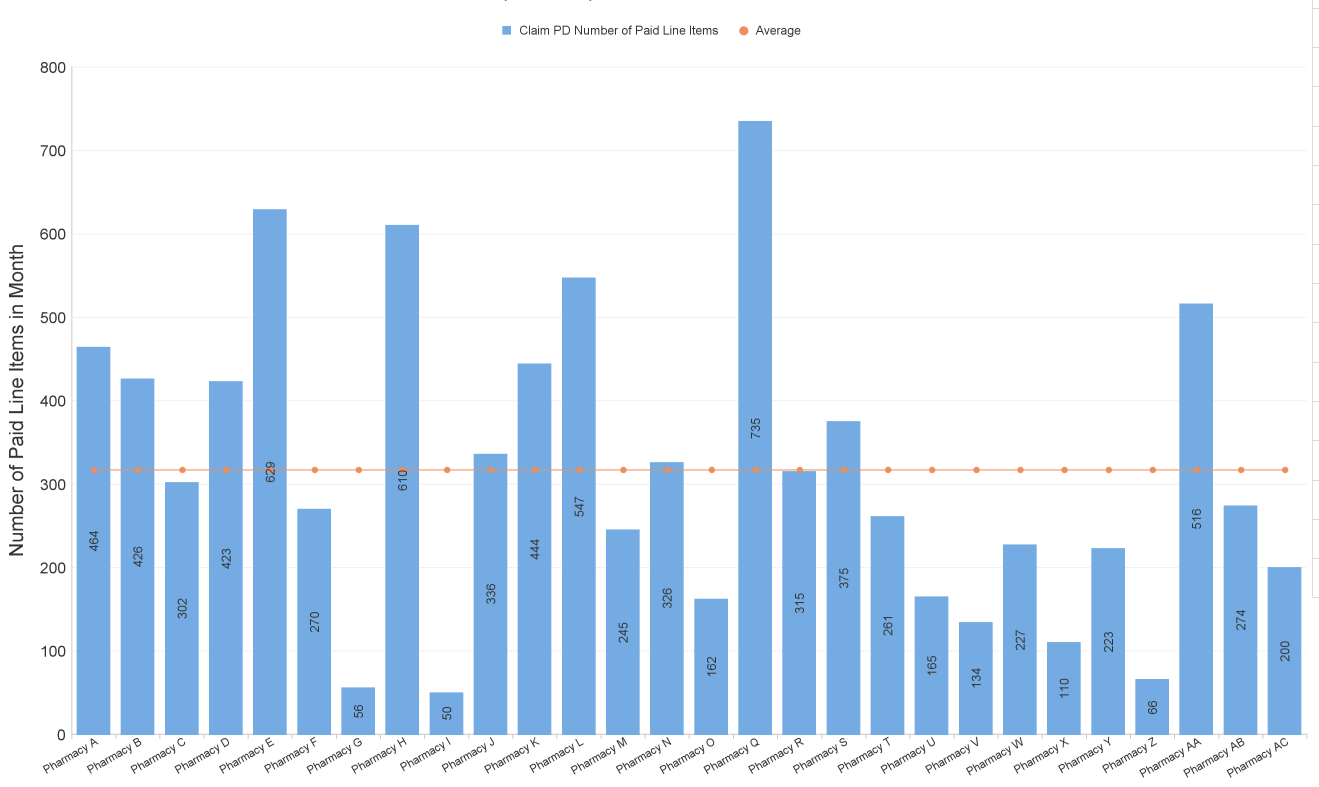
All items claimed on UCF forms, including all Pharmacy First sub-services, CPUS, EHC, GFF, HSV, MVP and NRT.

Items per '000 LS by Paid Date and Presc Health Board Name



	Jul 22	Aug 22	Sep 22	Oct 22	Nov 22	Dec 22	Jan 23	Feb 23	Mar 23	Apr 23	May 23	Jun 23	Jul 23
NHS Ayrshire & Arran	86.21	82.71	85.84	82.40	87.24	104.63	88.70	82.48	97.77	90.98	95.19	114.68	92.54
NHS Borders	73.12	61.58	59.92	63.20	72.30	74.30	64.89	62.48	75.36	64.43	72.90	85.30	74.48
NHS Dumfries & Galloway	43.10	43.37	41.87	42.03	45.66	55.10	44.75	46.16	50.05	47.41	54.79	64.48	50.53
NHS Fife	67.44	67.16	69.30	65.16	66.89	82.38	71.67	69.19	82.32	76.99	79.55	84.50	76.24
NHS Forth Valley	62.43	61.18	60.60	59.80	67.06	71.95	62.23	59.47	72.51	65.74	74.30	82.76	69.72
NHS Grampian	77.84	72.86	76.15	73.09	75.00	92.18	80.87	80.11	94.43	84.69	95.10	99.24	86.01
NHS Greater Glasgow & Clyde	73.88	77.61	78.01	81.54	85.34	99.21	81.52	75.68	90.68	86.38	91.87	104.69	82.78
NHS Highland	63.36	61.81	57.73	60.19	60.74	72.34	61.74	60.03	70.00	71.97	79.20	83.38	70.79
NHS Lanarkshire	81.16	77.72	81.66	77.25	80.19	93.42	80.33	73.42	89.61	84.29	90.85	106.23	74.78
NHS Lothian	52.30	54.09	52.79	54.08	58.62	66.84	58.99	56.48	66.33	62.47	65.19	71.41	58.95
NHS Orkney	27.50	26.42	20.57	23.35	22.18	41.25	25.40	32.19	29.89	27.55	30.43	31.28	33.92
NHS Shetland	36.44	30.66	33.95	41.43	40.37	44.19	40.45	41.27	41.67	36.34	49.11	46.41	32.67
NHS Tayside	58.21	57.93	57.08	54.54	59.93	68.79	59.66	58.55	72.23	65.52	70.25	77.06	65.11
NHS Western Isles	25.02	25.06	24.10	26.50	26.50	31.62	30.15	24.47	29.67	30.95	29.32	35.16	28.13

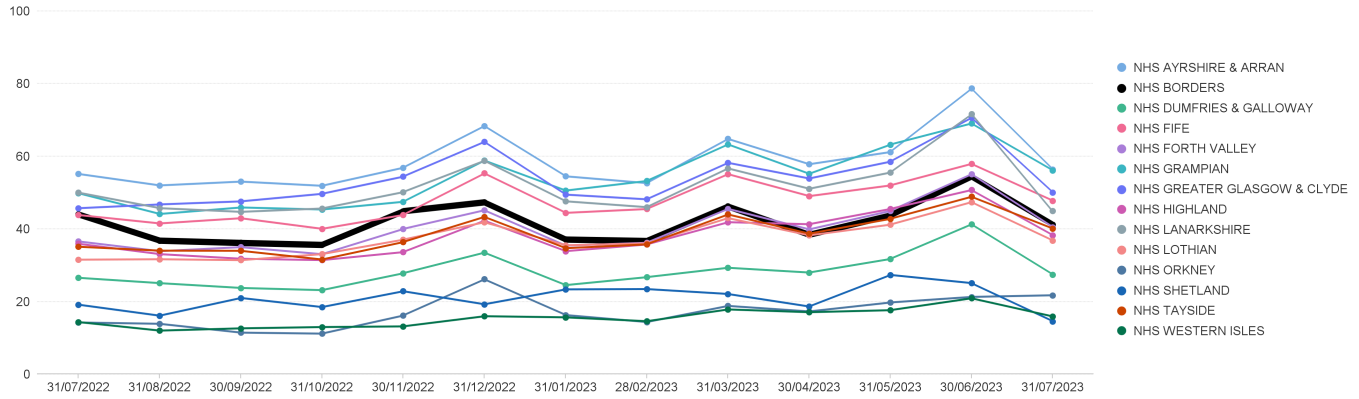
NHS Borders: Number of Paid Line Items in Month (Jul 2023)



Pharmacy First Items per '000 List Size by Board

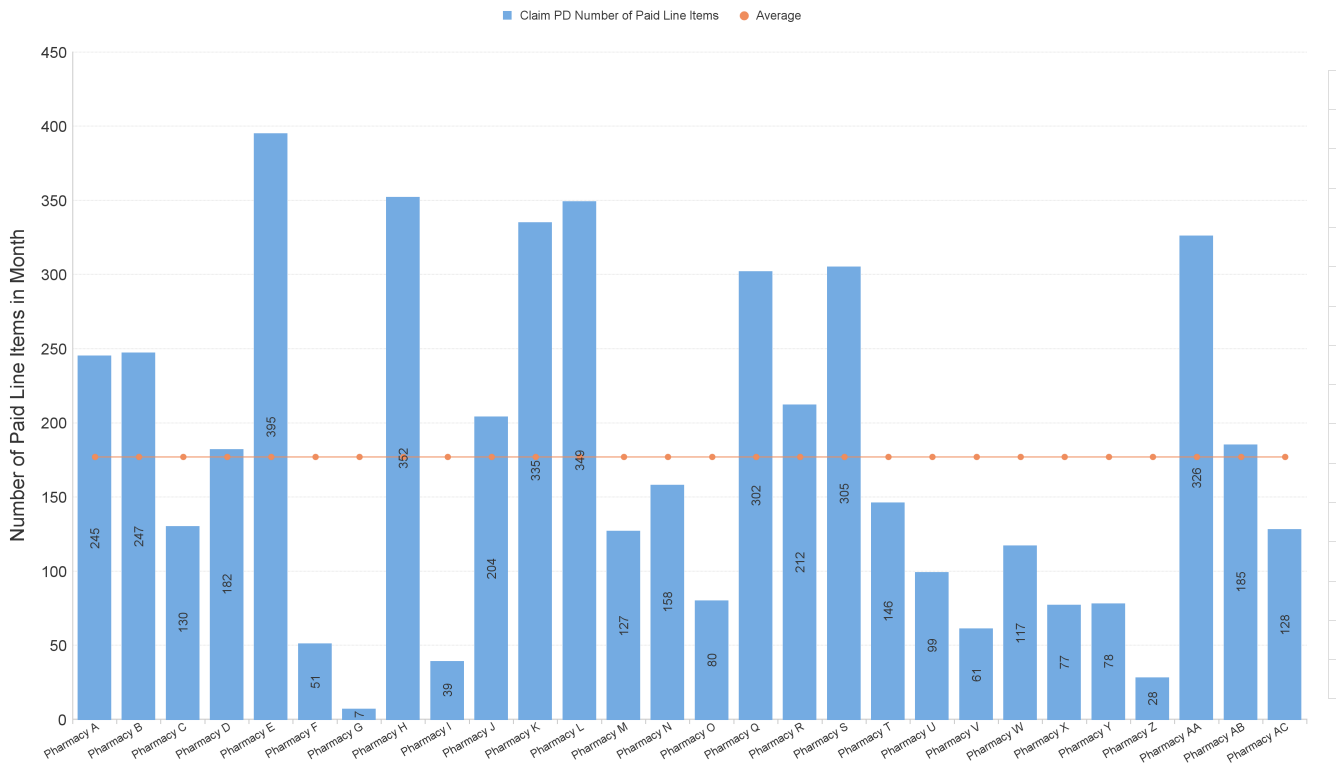
Pharmacy First includes sub-services flags M (Minor Ailments), UTI/G/R (UTI where an item has been dispensed), IPT/G/R (Impetigo where an item has been dispensed)

Items per '000 LS by Paid Date and Presc Health Board Name



	Jul 22	Aug 22	Sep 22	Oct 22	Nov 22	Dec 22	Jan 23	Feb 23	Mar 23	Apr 23	May 23	Jun 23	Jul 23
NHS Ayrshire & Arran	55.16	51.99	53.05	51.88	56.87	68.38	54.51	52.62	64.82	57.81	61.19	78.69	56.36
NHS Borders	44.08	36.83	36.20	35.65	44.93	47.39	37.13	36.74	46.26	38.43	43.77	54.49	41.23
NHS Dumfries & Galloway	26.57	25.10	23.77	23.17	27.82	33.52	24.55	26.75	29.33	28.01	31.76	41.32	27.44
NHS Fife	43.86	41.53	42.97	40.04	43.87	55.34	44.43	45.50	55.12	49.04	51.99	57.94	47.77
NHS Forth Valley	36.59	33.89	35.01	33.06	40.02	45.18	35.42	36.21	45.57	39.88	44.99	55.12	40.50
NHS Grampian	49.87	44.13	45.93	45.36	47.49	58.87	50.56	53.22	63.31	55.17	63.23	69.07	56.10
NHS Greater Glasgow & Clyde	45.72	46.76	47.60	49.68	54.42	64.02	49.47	48.16	58.23	53.89	58.54	70.65	50.03
NHS Highland	35.94	33.09	31.81	31.43	33.64	42.32	33.89	35.74	41.87	41.31	45.52	50.74	38.26
NHS Lanarkshire	50.02	45.73	44.72	45.64	50.16	58.82	47.63	46.00	56.70	51.07	55.55	71.61	45.00
NHS Lothian	31.55	31.67	31.42	33.08	37.07	41.87	35.52	36.04	43.01	38.24	41.20	47.42	36.81
NHS Orkney	14.27	13.91	11.48	11.20	16.19	26.18	16.32	14.39	18.84	17.30	19.78	21.30	21.76
NHS Shetland	19.18	16.13	21.03	18.50	22.87	19.27	23.38	23.47	22.12	18.65	27.37	25.10	14.59
NHS Tayside	35.12	34.04	34.00	31.59	36.41	43.35	34.71	35.77	44.02	38.71	42.81	48.89	40.10
NHS Western Isles	14.39	12.03	12.66	13.01	13.19	15.99	15.68	14.61	17.86	17.10	17.65	20.94	15.91

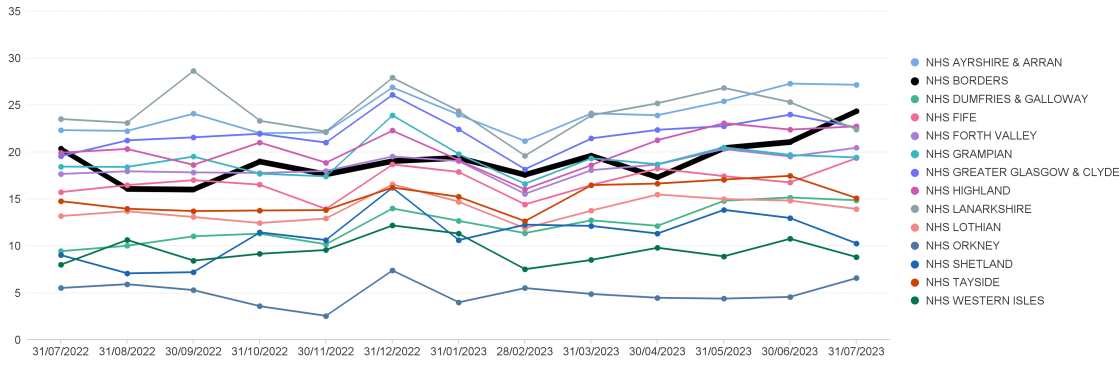
NHS Borders: Number of Paid Line Items in Month (Jul 2023)



Community Pharmacy Urgent Supply (CPUS) Items per '000 List Size by Board

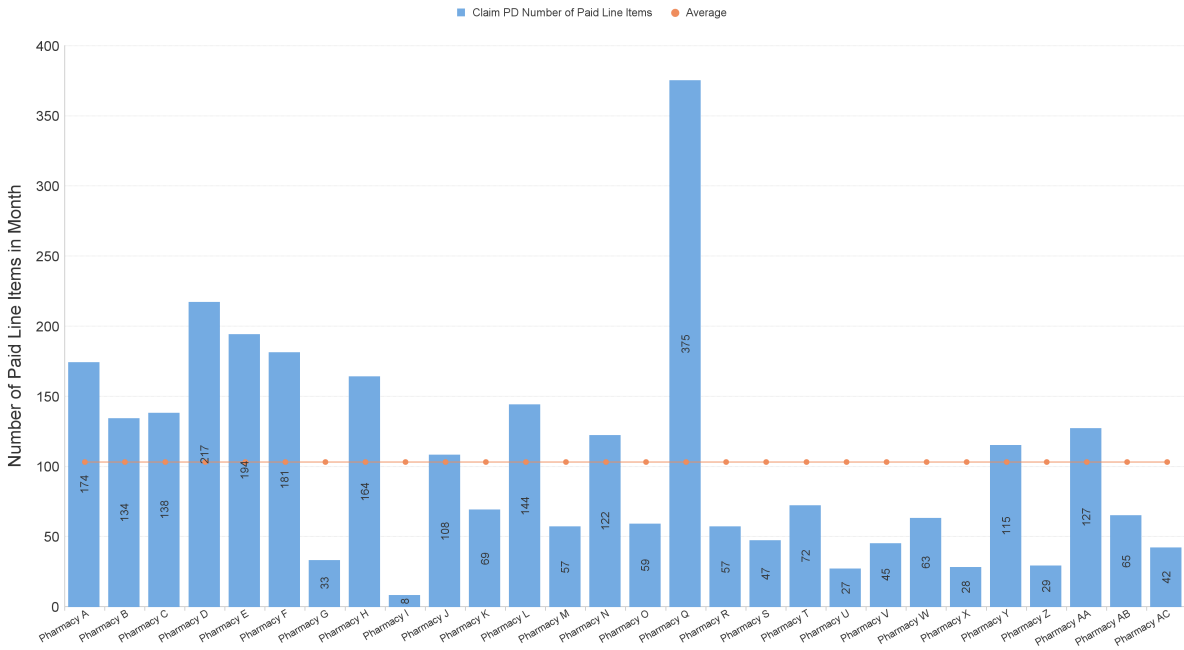
Items dispensed under sub-service flag CPUS

Items per '000 LS by Paid Date and Presc Health Board Name



	Jul 22	Aug 22	Sep 22	Oct 22	Nov 22	Dec 22	Jan 23	Feb 23	Mar 23	Apr 23	May 23	Jun 23	Jul 23
NHS AYRSHIRE & ARRAN	22.35	22.26	24.11	22.01	22.10	26.90	23.99	21.17	24.13	23.93	25.42	27.30	27.17
NHS BORDERS	20.37	16.10	16.03	19.01	17.64	19.06	19.41	17.59	19.65	17.33	20.44	21.09	24.38
NHS DUMFRIES & GALLOWAY	9.45	10.03	11.04	11.32	10.18	14.01	12.68	11.38	12.74	12.15	14.82	15.17	14.88
NHS FIFE	15.74	16.49	17.02	16.54	13.94	18.69	17.89	14.42	16.49	18.25	17.44	16.78	19.37
NHS FORTH VALLEY	17.67	17.96	17.85	17.78	18.00	19.54	19.05	15.55	18.08	18.68	20.33	19.53	20.47
NHS GRAMPIAN	18.46	18.42	19.53	17.71	17.42	23.93	19.80	16.63	19.36	18.71	20.52	19.70	19.43
NHS GREATER GLASGOW & CLYDE	19.57	21.26	21.58	21.96	21.01	26.11	22.43	18.17	21.46	22.38	22.78	24.00	22.63
NHS HIGHLAND	19.94	20.34	18.64	21.04	18.87	22.30	19.15	16.03	18.62	21.28	23.09	22.40	22.75
NHS LANARKSHIRE	23.53	23.13	28.66	23.35	22.19	27.93	24.38	19.60	23.92	25.20	26.85	25.33	22.41
NHS Lothian	13.19	13.71	13.09	12.46	12.93	16.58	14.72	11.89	13.77	15.49	15.00	14.84	13.95
NHS ORKNEY	5.54	5.94	5.31	3.60	2.56	7.42	4.00	5.53	4.90	4.49	4.40	4.58	6.60
NHS SHETLAND	9.05	7.09	7.22	11.46	10.63	16.23	10.62	12.28	12.15	11.33	13.86	12.99	10.28
NHS TAYSIDE	14.78	13.97	13.73	13.79	13.83	16.24	15.25	12.64	16.49	16.65	17.08	17.48	15.10
NHS WESTERN ISLES	8.01	10.66	8.45	9.18	9.58	12.20	11.33	7.53	8.52	9.82	8.90	10.78	8.82

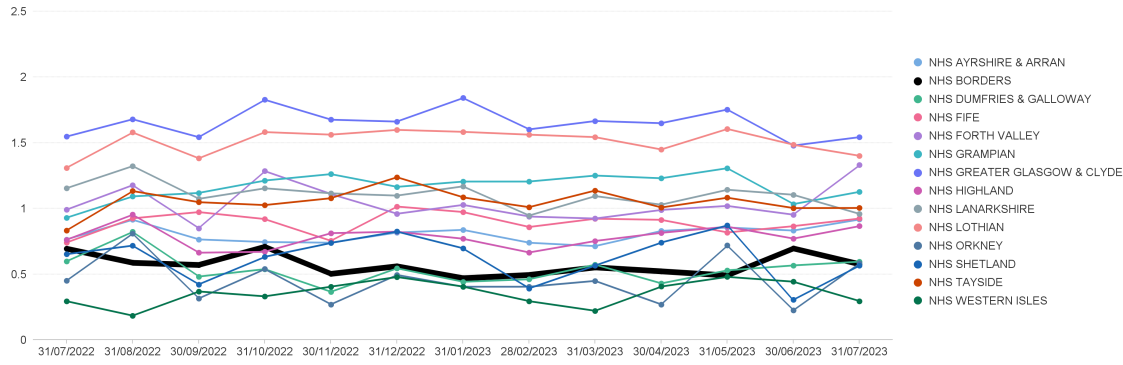
NHS Borders: Number of Paid Line Items in Month (Jul 2023)



Emergency Hormonal Contraception Items per '000 List Size by Board

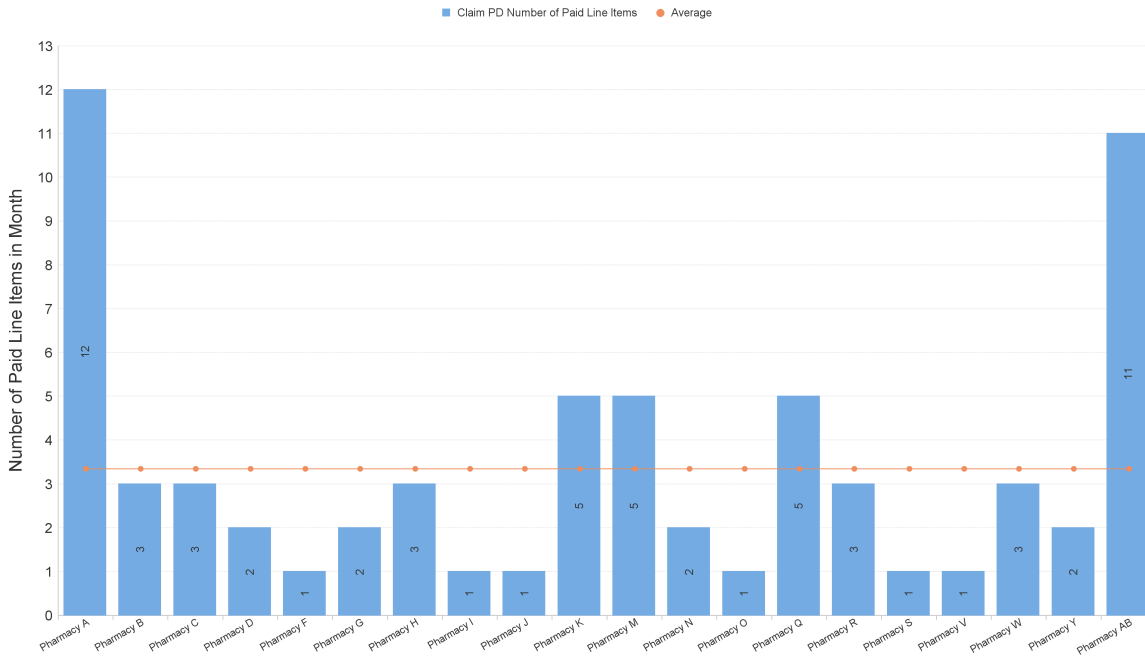
Items dispensed under sub-service flag EHC

Items per '000 LS by Paid Date and Presc Health Board Name



	Jul 22	Aug 22	Sep 22	Oct 22	Nov 22	Dec 22	Jan 23	Feb 23	Mar 23	Apr 23	May 23	Jun 23	Jul 23
NHS AYRSHIRE & ARRAN	0.76	0.91	0.76	0.74	0.74	0.82	0.84	0.74	0.71	0.83	0.86	0.83	0.92
NHS BORDERS	0.70	0.59	0.57	0.71	0.50	0.56	0.47	0.50	0.55	0.52	0.49	0.70	0.58
NHS DUMFRIES & GALLOWAY	0.60	0.82	0.48	0.54	0.37	0.55	0.44	0.46	0.57	0.43	0.53	0.57	0.60
NHS FIFE	0.74	0.92	0.97	0.92	0.75	1.01	0.97	0.86	0.92	0.91	0.82	0.87	0.92
NHS FORTH VALLEY	0.99	1.18	0.85	1.28	1.11	0.96	1.03	0.94	0.92	0.99	1.02	0.95	1.33
NHS GRAMPIAN	0.93	1.09	1.12	1.21	1.26	1.16	1.20	1.20	1.25	1.23	1.31	1.03	1.13
NHS GREATER GLASGOW & CLYDE	1.55	1.68	1.54	1.83	1.68	1.66	1.84	1.60	1.67	1.65	1.75	1.48	1.54
NHS HIGHLAND	0.76	0.95	0.66	0.67	0.81	0.82	0.77	0.67	0.75	0.81	0.86	0.77	0.87
NHS LANARKSHIRE	1.15	1.32	1.07	1.15	1.12	1.10	1.17	0.95	1.09	1.03	1.14	1.10	0.96
NHS LOTHIAN	1.31	1.58	1.38	1.58	1.56	1.60	1.58	1.56	1.54	1.45	1.61	1.48	1.40
NHS ORKNEY	0.45	0.81	0.32	0.54	0.27	0.49	0.40	0.40	0.45	0.27	0.72	0.22	0.58
NHS SHETLAND	0.65	0.72	0.42	0.63	0.74	0.82	0.70	0.39	0.57	0.74	0.87	0.31	0.57
NHS TAYSIDE	0.83	1.13	1.05	1.03	1.08	1.24	1.08	1.01	1.14	1.01	1.08	1.00	1.00
NHS WESTERN ISLES	0.30	0.18	0.37	0.33	0.41	0.48	0.41	0.30	0.22	0.41	0.48	0.44	0.30

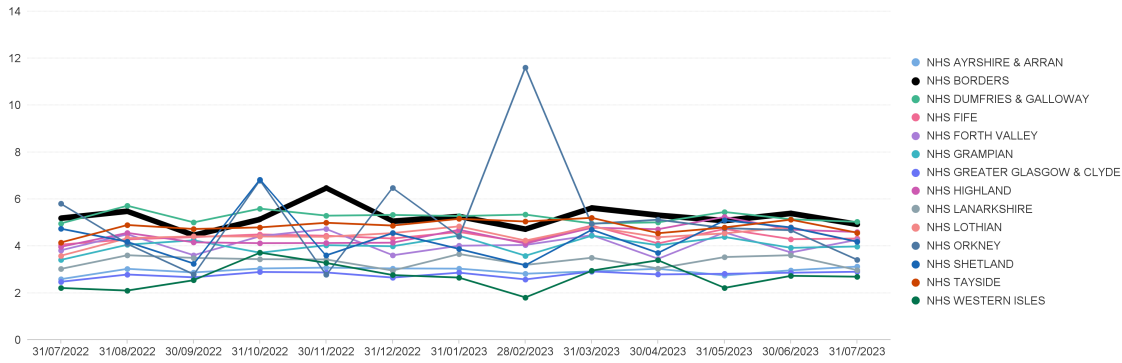
NHS Borders: Number of Paid Line Items in Month (Jul 2023)



Gluten Free Food Items per '000 List Size by Board

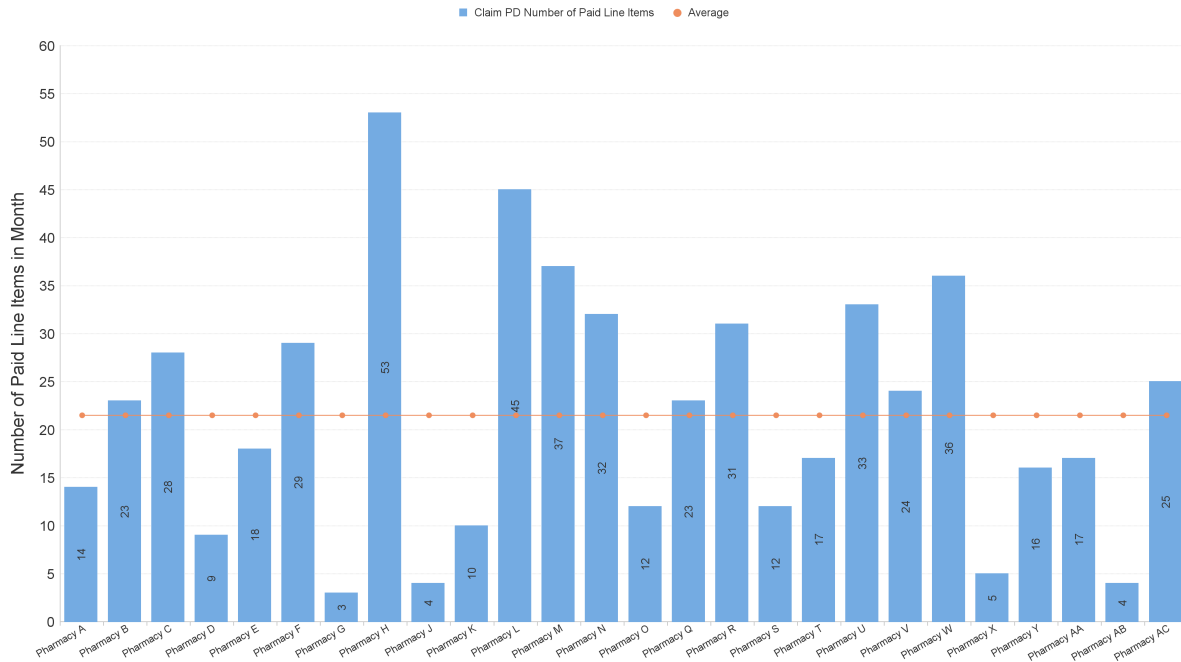
Items dispensed under sub-service flag GFF

Items per '000 LS by Paid Date and Presc Health Board Name



	Jul 22	Aug 22	Sep 22	Oct 22	Nov 22	Dec 22	Jan 23	Feb 23	Mar 23	Apr 23	May 23	Jun 23	Jul 23
NHS AYRSHIRE & ARRAN	2.59	3.03	2.88	3.04	3.08	3.05	3.04	2.82	2.92	3.03	2.75	2.97	3.13
NHS BORDERS	5.19	5.49	4.46	5.15	6.48	5.06	5.27	4.72	5.63	5.32	5.09	5.40	4.93
NHS DUMFRIES & GALLOWAY	4.96	5.72	5.01	5.60	5.29	5.33	5.28	5.34	4.96	5.01	5.45	5.14	5.03
NHS FIFE	4.06	4.28	4.38	4.50	4.44	4.32	4.60	4.16	4.88	4.11	4.73	4.29	4.32
NHS FORTH VALLEY	3.82	4.50	3.61	4.42	4.73	3.61	4.02	4.05	4.46	3.45	4.59	3.72	4.27
NHS GRAMPIAN	3.41	4.06	4.25	3.71	4.04	3.99	4.45	3.58	4.44	4.03	4.39	3.92	3.98
NHS GREATER GLASGOW & CLYDE	2.48	2.79	2.67	2.90	2.88	2.66	2.87	2.58	2.92	2.79	2.82	2.86	2.91
NHS HIGHLAND	3.97	4.56	4.16	4.12	4.13	4.14	4.69	4.10	4.78	4.72	5.24	4.70	4.60
NHS LANARKSHIRE	3.03	3.61	3.50	3.44	3.43	2.96	3.66	3.19	3.50	3.04	3.53	3.61	2.97
NHS LOTHIAN	3.59	4.34	4.41	4.41	4.40	4.55	4.84	4.23	4.83	4.38	4.54	4.80	4.18
NHS ORKNEY	5.81	4.10	2.79	6.79	2.79	6.48	4.41	11.60	4.94	5.12	4.76	4.67	3.41
NHS SHETLAND	4.74	4.18	3.25	6.83	3.60	4.56	3.87	3.18	4.70	3.70	5.10	4.79	4.18
NHS TAYSIDE	4.15	4.90	4.73	4.80	4.99	4.87	5.16	5.04	5.20	4.55	4.79	5.13	4.57
NHS WESTERN ISLES	2.21	2.10	2.55	3.72	3.28	2.76	2.66	1.81	2.95	3.40	2.22	2.73	2.70

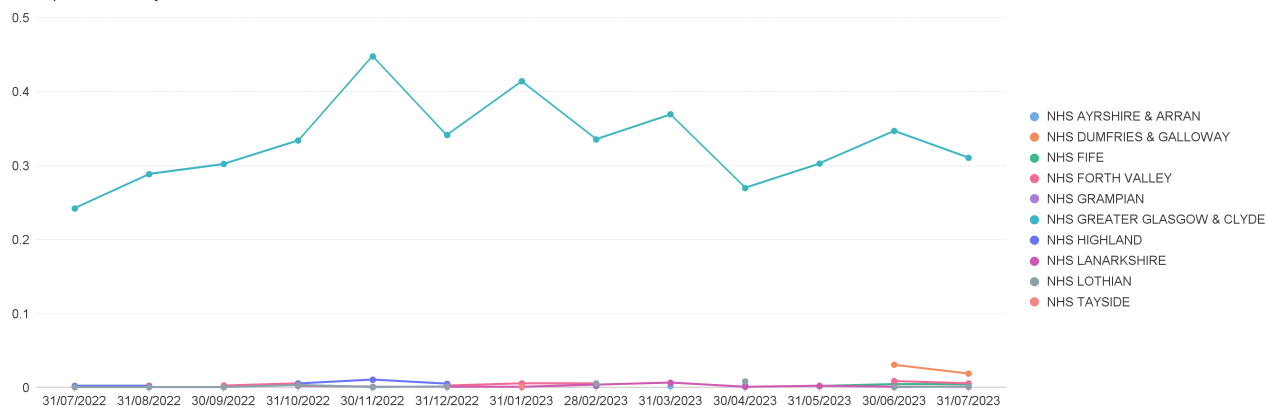
NHS Borders: Number of Paid Line Items in Month (Jul 2023)



Healthy Start Vitamins Items per '000 List Size by Board

Items dispensed under sub-service flag HSV

Items per '000 LS by Paid Date and Presc Health Board Name



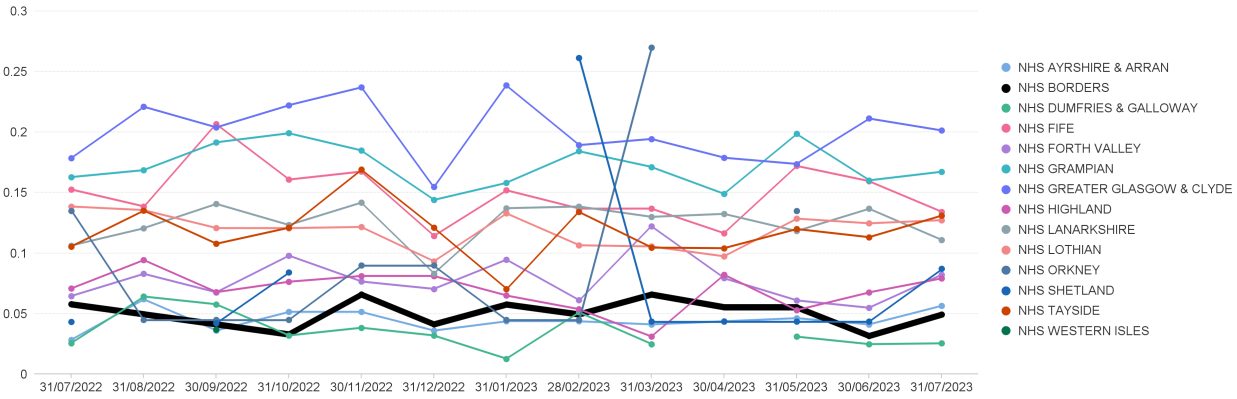
	Jul 22	Aug 22	Sep 22	Oct 22	Nov 22	Dec 22	Jan 23	Feb 23	Mar 23	Apr 23	May 23	Jun 23	Jul 23
NHS AYRSHIRE & ARRAN									0.00				
NHS DUMFRIES & GALLOWAY												0.03	0.02
NHS FIFE	0.00										0.00	0.01	0.01
NHS FORTH VALLEY			0.00	0.01		0.00	0.01	0.01		0.00		0.01	0.01
NHS GRAMPIAN				0.00	0.00								
NHS GREATER GLASGOW & CLYDE	0.24	0.29	0.30	0.33	0.45	0.34	0.41	0.34	0.37	0.27	0.30	0.35	0.31
NHS HIGHLAND	0.00	0.00		0.01	0.01	0.01		0.00		0.00			
NHS LANARKSHIRE		0.00		0.00	0.00	0.00	0.00	0.00	0.01	0.00	0.00	0.00	0.00
NHS LOTHIAN	0.00	0.00	0.00	0.00	0.00	0.00			0.01	0.01			0.00
NHS TAYSIDE							0.00						

No Community Pharmacy graph included as number so low.

MenB Paracetamol Items per '000 List Size by Board

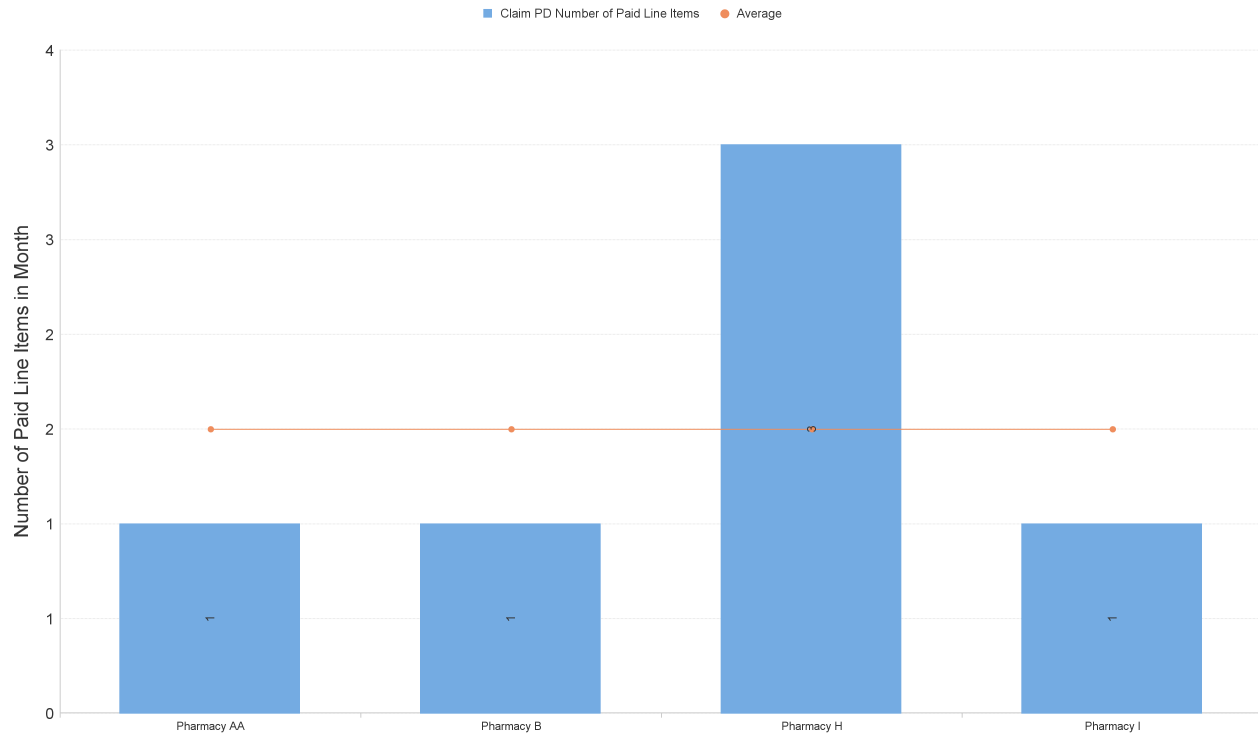
Items dispensed under sub-service flag MVP

Items per '000 LS by Paid Date and Presc Health Board Name



	Jul 22	Aug 22	Sep 22	Oct 22	Nov 22	Dec 22	Jan 23	Feb 23	Mar 23	Apr 23	May 23	Jun 23	Jul 23
NHS AYRSHIRE & ARRAN	0.03	0.06	0.04	0.05	0.05	0.04	0.04	0.04	0.04	0.04	0.05	0.04	0.06
NHS BORDERS	0.06	0.05	0.04	0.03	0.07	0.04	0.06	0.05	0.07	0.06	0.06	0.03	0.05
NHS DUMFRIES & GALLOWAY	0.03	0.06	0.06	0.03	0.04	0.03	0.01	0.05	0.02		0.03	0.02	0.03
NHS FIFE	0.15	0.14	0.21	0.16	0.17	0.11	0.15	0.14	0.14	0.12	0.17	0.16	0.13
NHS FORTH VALLEY	0.06	0.08	0.07	0.10	0.08	0.07	0.09	0.06	0.12	0.08	0.06	0.05	0.08
NHS GRAMPIAN	0.16	0.17	0.19	0.20	0.18	0.14	0.16	0.18	0.17	0.15	0.20	0.16	0.17
NHS GREATER GLASGOW & CLYDE	0.18	0.22	0.20	0.22	0.24	0.15	0.24	0.19	0.19	0.18	0.17	0.21	0.20
NHS HIGHLAND	0.07	0.09	0.07	0.08	0.08	0.08	0.07	0.05	0.03	0.08	0.05	0.07	0.08
NHS LANARKSHIRE	0.11	0.12	0.14	0.12	0.14	0.08	0.14	0.14	0.13	0.13	0.12	0.14	0.11
NHS LOTHIAN	0.14	0.14	0.12	0.12	0.12	0.09	0.13	0.11	0.11	0.10	0.13	0.12	0.13
NHS ORKNEY	0.14	0.05	0.05	0.04	0.09	0.09	0.04	0.04	0.27		0.13		
NHS SHETLAND	0.04		0.04	0.08				0.26	0.04	0.04	0.04	0.04	0.09
NHS TAYSIDE	0.11	0.14	0.11	0.12	0.17	0.12	0.07	0.13	0.10	0.10	0.12	0.11	0.13
NHS WESTERN ISLES			0.04										

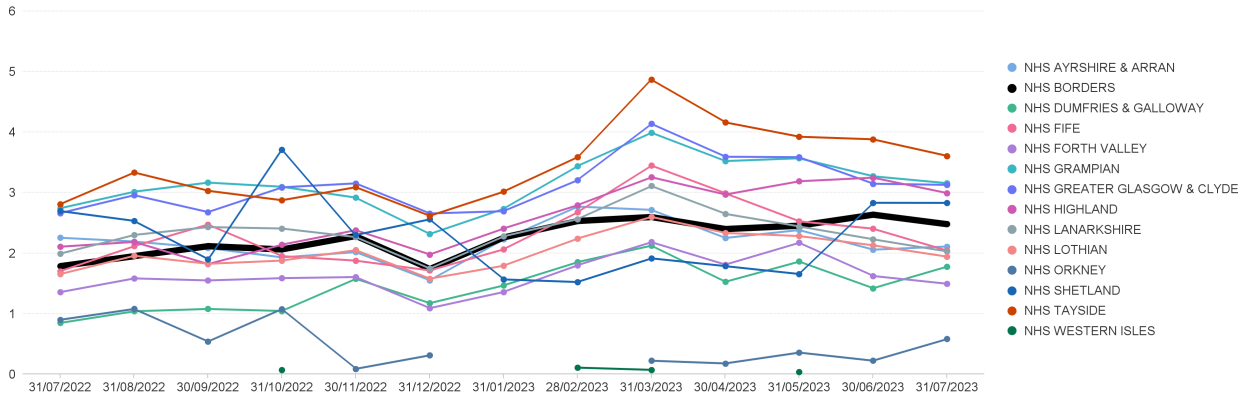
NHS Borders: Number of Paid Line Items in Month (Jul 2023)



Nicotine Replacement Therapy Items per '000 List Size by Board

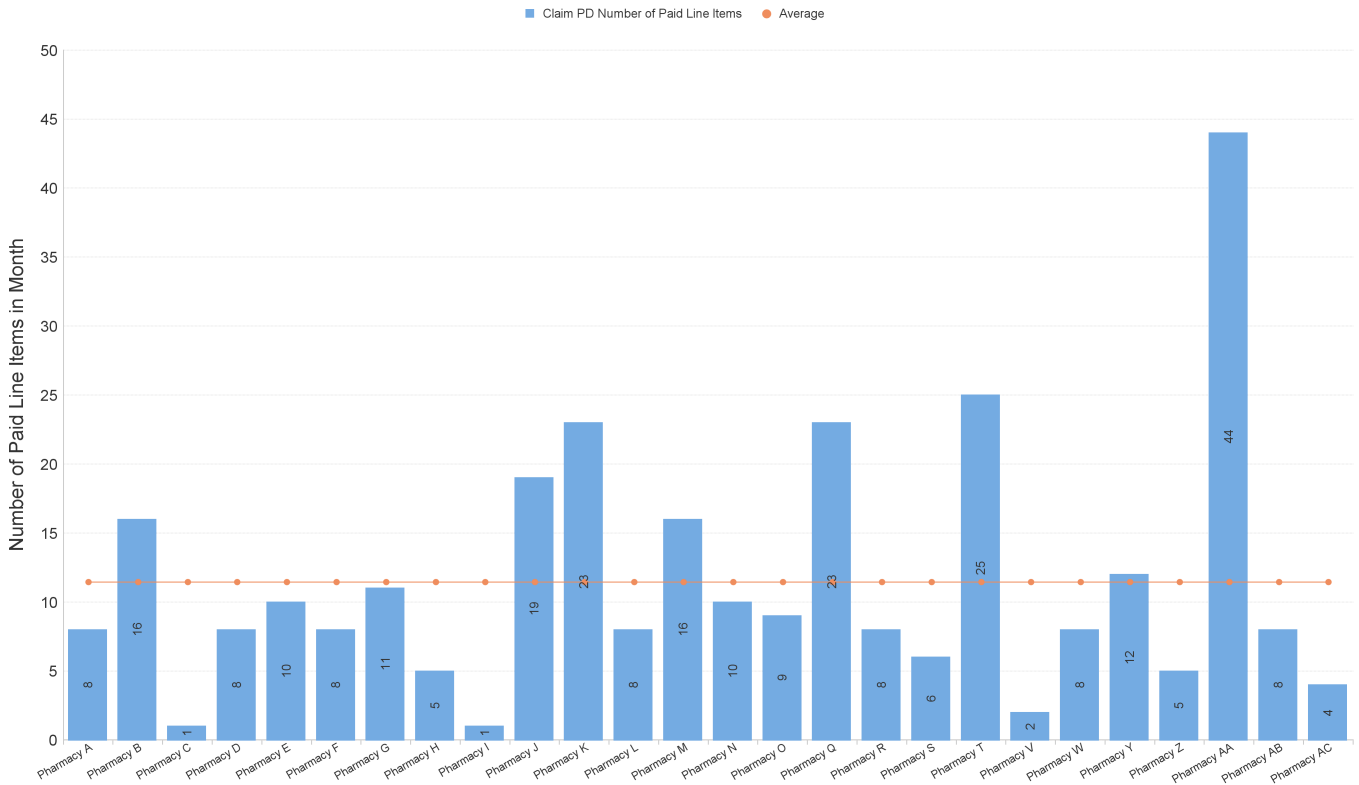
Items dispensed under sub-service flag NRT

Items per '000 LS by Paid Date and Presc Health Board Name



	Jul 22	Aug 22	Sep 22	Oct 22	Nov 22	Dec 22	Jan 23	Feb 23	Mar 23	Apr 23	May 23	Jun 23	Jul 23
NHS AYRSHIRE & ARRAN	2.26	2.19	2.09	1.93	2.02	1.55	2.23	2.77	2.72	2.25	2.38	2.06	2.11
NHS BORDERS	1.79	1.95	2.12	2.06	2.29	1.74	2.26	2.53	2.60	2.40	2.46	2.64	2.48
NHS DUMFRIES & GALLOWAY	0.85	1.04	1.08	1.05	1.58	1.17	1.47	1.85	2.13	1.53	1.86	1.42	1.78
NHS FIFE	1.70	2.12	2.47	1.95	1.88	1.72	2.07	2.68	3.45	2.99	2.53	2.40	2.04
NHS FORTH VALLEY	1.36	1.58	1.55	1.59	1.61	1.09	1.36	1.80	2.18	1.81	2.17	1.62	1.50
NHS GRAMPIAN	2.74	3.02	3.17	3.10	2.92	2.32	2.73	3.44	3.99	3.52	3.57	3.27	3.16
NHS GREATER GLASGOW & CLYDE	2.66	2.96	2.68	3.09	3.15	2.66	2.69	3.21	4.14	3.59	3.59	3.15	3.13
NHS HIGHLAND	2.11	2.19	1.82	2.14	2.38	1.98	2.41	2.79	3.26	2.97	3.19	3.25	2.99
NHS LANARKSHIRE	1.99	2.30	2.43	2.41	2.27	1.75	2.28	2.56	3.11	2.65	2.44	2.23	2.03
NHS Lothian	1.65	1.96	1.83	1.88	2.05	1.58	1.79	2.24	2.60	2.33	2.28	2.13	1.94
NHS ORKNEY	0.90	1.08	0.54	1.08	0.09	0.31			0.22	0.18	0.36	0.22	0.58
NHS SHETLAND	2.70	2.53	1.90	3.71	2.30	2.56	1.57	1.52	1.92	1.79	1.66	2.83	2.83
NHS TAYSIDE	2.81	3.33	3.03	2.87	3.09	2.62	3.02	3.59	4.87	4.16	3.92	3.88	3.61
NHS WESTERN ISLES				0.07				0.11	0.07		0.04		

NHS Borders: Number of Paid Line Items in Month (Jul 2023)



NHS Borders - All UCF claims by Pharmacy, Jul 2023

		Other Service	Other Service	Other Service	Other Service	Other Service	Other Service	Other Service	Other Service	Other Service	Other Service	Other Service	Pharmacy First Service	Pharmacy First Service	Pharmacy First Service	Pharmacy First Service	Pharmacy First Service	
		BRC	COV	CPUS	EBC	EHC	GFF	MVP	NRT	SHG	SIG	SIR	IPG	IPR	M	UTG	UTR	
Pharmacy B	31/07/2023			174	1	12	14			8	1	8	1	1	227	16		
Pharmacy C	31/07/2023			134	1	3	23	1		16			1	1	237	9		
Pharmacy D	31/07/2023			138		3	28			1		2			122	8		
Pharmacy E	31/07/2023			217		2	9			8	1	4		1	170	11		
Pharmacy F	31/07/2023	2		194	1		18			10		9		3	380	12		
Pharmacy G	31/07/2023			181		1	29			8					50	1		
Pharmacy H	31/07/2023			33		2	3			11					5	1	1	
Pharmacy I	31/07/2023			164		3	53	3		5	1	29		7	328	17		
Pharmacy J	31/07/2023			8		1		1		1					39			
Pharmacy K	31/07/2023			108		1	4			19					197	7		
Pharmacy L	31/07/2023			69		5	10			23		2		1	327	7		
Pharmacy M	31/07/2023			144			45			8		1			344	5		
Pharmacy N	31/07/2023			57		5	37			16	1	2			124	3		
Pharmacy O	31/07/2023			122		2	32			10		2		1	151	6		
Pharmacy P	31/07/2023			59		1	12			9		1		1	79			
Pharmacy R	31/07/2023	1		375		5	23			23		5	1	1	285	16		
Pharmacy S	31/07/2023			57		3	31			8		4		1	203	8		
Pharmacy T	31/07/2023			47		1	12			6		4		2	293	10		
Pharmacy U	31/07/2023			72			17			25		1			143	3		
Pharmacy V	31/07/2023		2	27			33					4			96	3		
Pharmacy W	31/07/2023			45	1	1	24			2					59	2		
Pharmacy X	31/07/2023			63		3	36			8					111	6		
Pharmacy Y	31/07/2023			28			5								76	1		
Pharmacy Z	31/07/2023			115		2	16			12					77	1		
Pharmacy AA	31/07/2023			29						5		4			27	1		
Pharmacy AB	31/07/2023			127			17	1		44	1				320	6		
Pharmacy AC	31/07/2023			65		11	4			8		1			182	2	1	
Pharmacy A	31/07/2023			42			25			4		1			119	9		