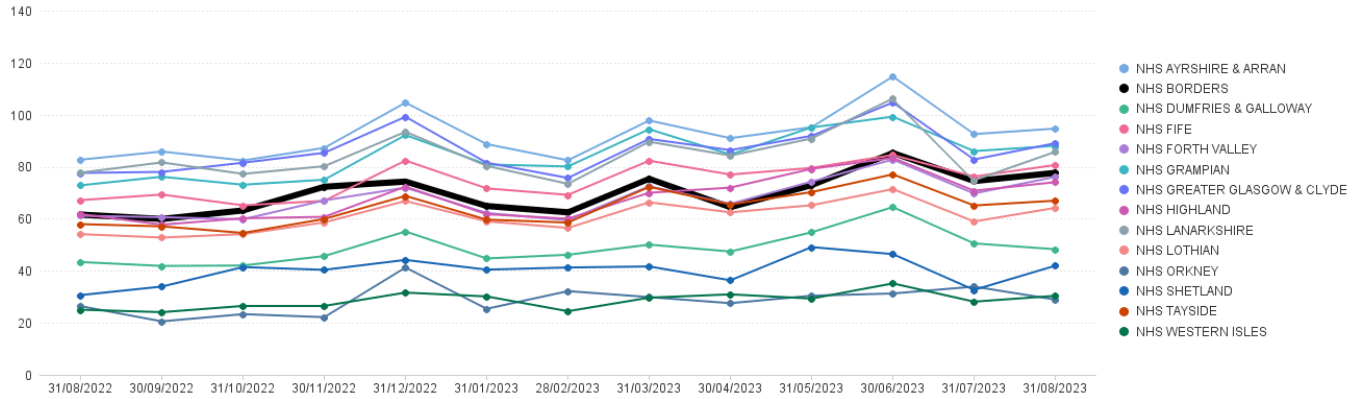


All UCF Claims - Items per '000 List Size by Board, up to August 2023

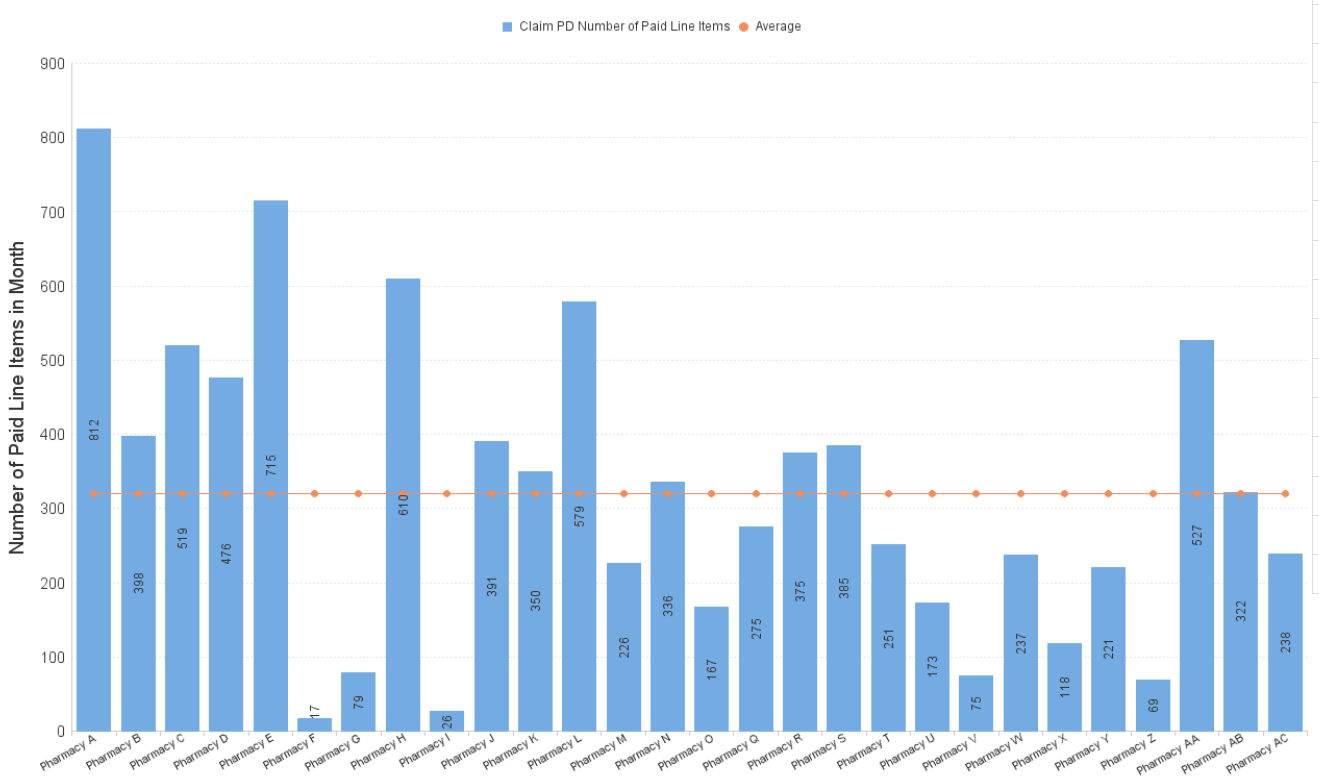
All items claimed on UCF forms, including all Pharmacy First sub-services. CPUS, EHC, GFF, HSV, MVP and NRT.

Items per '000 LS by Paid Date and Presc Health Board Name



	Aug 22	Sep 22	Oct 22	Nov 22	Dec 22	Jan 23	Feb 23	Mar 23	Apr 23	May 23	Jun 23	Jul 23	Aug 23
NHS AYRSHIRE & ARRAN	82.71	85.84	82.40	87.24	104.63	88.70	82.48	97.77	90.98	95.19	114.68	92.54	94.65
NHS BORDERS	61.58	59.92	63.20	72.30	74.30	64.89	62.48	75.36	64.43	72.90	85.30	74.48	77.64
NHS DUMFRIES & GALLOWAY	43.37	41.87	42.03	45.66	55.10	44.75	46.16	50.05	47.41	54.79	64.48	50.53	48.29
NHS FIFE	67.16	69.30	65.16	66.89	82.38	71.67	69.19	82.32	76.99	79.55	84.50	76.24	80.65
NHS FORTH VALLEY	61.18	60.60	59.80	67.06	71.95	62.23	59.47	72.51	65.74	74.30	82.76	69.72	76.11
NHS GRAMPIAN	72.86	76.15	73.09	75.00	92.18	80.87	80.11	94.43	84.69	95.10	99.24	86.01	88.05
NHS GREATER GLASGOW & CLYDE	77.61	78.01	81.54	85.34	99.21	81.52	75.68	90.68	86.38	91.87	104.69	82.78	89.06
NHS HIGHLAND	61.81	57.73	60.19	60.74	72.34	61.74	60.03	70.00	71.97	79.20	83.38	70.79	74.06
NHS LANARKSHIRE	77.72	81.66	77.25	80.19	93.42	80.33	73.42	89.61	84.29	90.85	106.23	74.78	85.73
NHS LOTHIAN	54.09	52.79	54.08	58.62	66.84	58.99	56.48	66.33	62.47	65.19	71.41	58.95	64.19
NHS ORKNEY	26.42	20.57	23.35	22.18	41.25	25.40	32.19	29.89	27.55	30.43	31.28	33.92	28.94
NHS SHETLAND	30.66	33.95	41.43	40.37	44.19	40.45	41.27	41.67	36.34	49.11	46.41	32.67	41.95
NHS TAYSIDE	57.93	57.08	54.54	59.93	68.79	59.66	58.55	72.23	65.52	70.25	77.06	65.11	66.95
NHS WESTERN ISLES	25.06	24.10	26.50	26.50	31.62	30.15	24.47	29.67	30.95	29.32	35.16	28.13	30.38

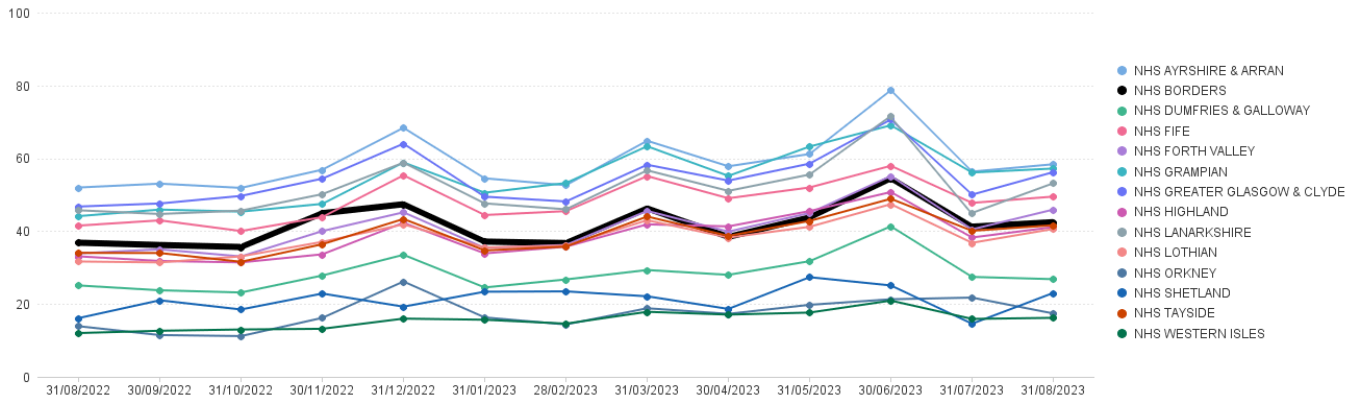
NHS Borders: Number of Paid Line Items in Month (Aug 2023)



Pharmacy First Items per '000 List Size by Board

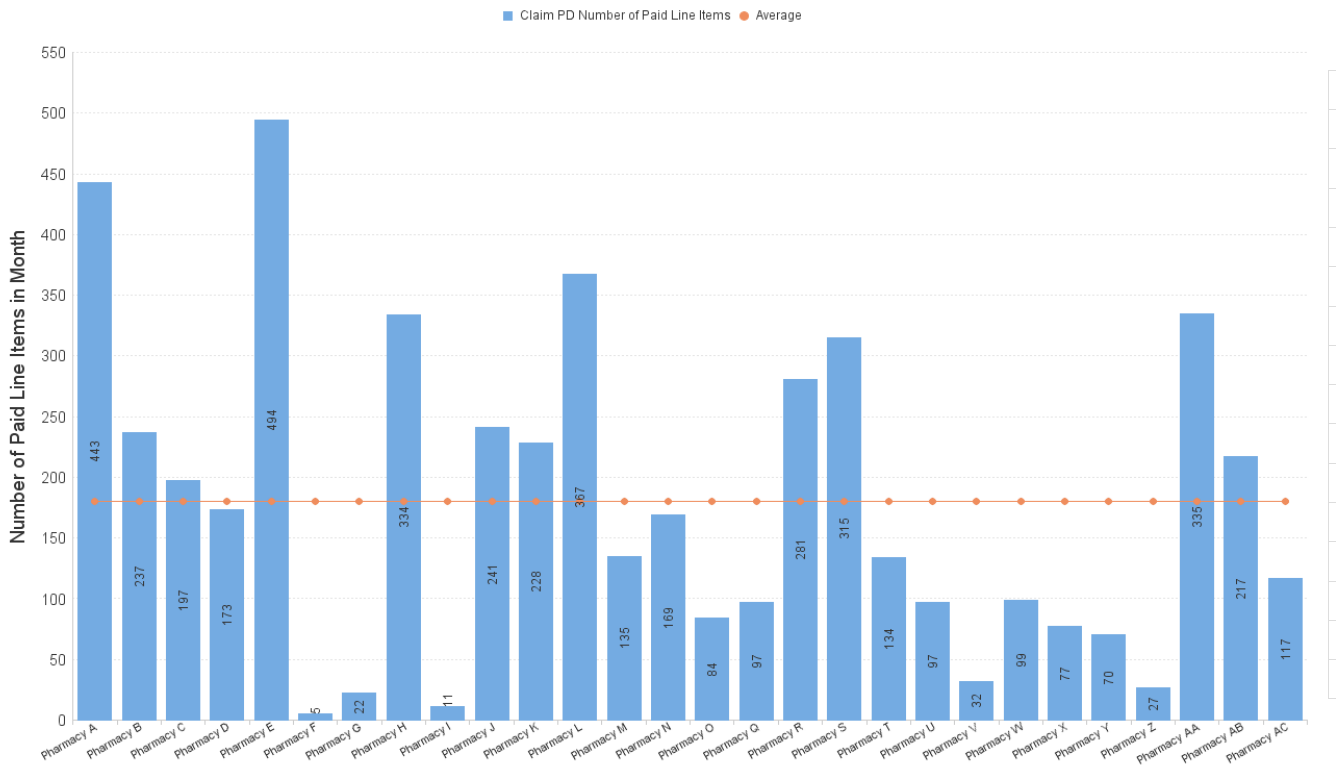
Pharmacy First includes sub-services flags M (Minor Ailments), UTI/G/R (UTI where an item has been dispensed), IPT/G/R (Impetigo where an item has been dispensed)

Items per '000 LS by Paid Date and Presc Health Board Name



	Aug 22	Sep 22	Oct 22	Nov 22	Dec 22	Jan 23	Feb 23	Mar 23	Apr 23	May 23	Jun 23	Jul 23	Aug 23
NHS AYRSHIRE & ARRAN	51.99	53.05	51.88	56.87	68.38	54.51	52.62	64.82	57.81	61.19	78.69	56.36	58.37
NHS BORDERS	36.83	36.20	35.65	44.93	47.39	37.13	36.74	46.26	38.43	43.77	54.49	41.23	42.47
NHS DUMFRIES & GALLOWAY	25.10	23.77	23.17	27.82	33.52	24.55	26.75	29.33	28.01	31.76	41.32	27.44	26.82
NHS FIFE	41.53	42.97	40.04	43.87	55.34	44.43	45.50	55.12	49.04	51.99	57.94	47.77	49.49
NHS FORTH VALLEY	33.89	35.01	33.06	40.02	45.18	35.42	36.21	45.57	39.88	44.99	55.12	40.50	45.93
NHS GRAMPIAN	44.13	45.93	45.36	47.49	58.87	50.56	53.22	63.31	55.17	63.23	69.07	56.10	57.20
NHS GREATER GLASGOW & CLYDE	46.76	47.60	49.68	54.42	64.02	49.47	48.16	58.23	53.89	58.54	70.65	50.03	56.21
NHS HIGHLAND	33.09	31.81	31.43	33.64	42.32	33.89	35.74	41.87	41.31	45.52	50.74	38.26	41.12
NHS LANARKSHIRE	45.73	44.72	45.64	50.16	58.82	47.63	46.00	56.70	51.07	55.55	71.61	45.00	53.16
NHS Lothian	31.67	31.42	33.08	37.07	41.87	35.52	36.04	43.01	38.24	41.20	47.42	36.81	40.61
NHS ORKNEY	13.91	11.48	11.20	16.19	26.18	16.32	14.39	18.84	17.30	19.78	21.30	21.76	17.41
NHS SHETLAND	16.13	21.03	18.50	22.87	19.27	23.38	23.47	22.12	18.65	27.37	25.10	14.59	23.04
NHS TAYSIDE	34.04	34.00	31.59	36.41	43.35	34.71	35.77	44.02	38.71	42.81	48.89	40.10	41.64
NHS WESTERN ISLES	12.03	12.66	13.01	13.19	15.99	15.68	14.61	17.86	17.10	17.65	20.94	15.91	16.21

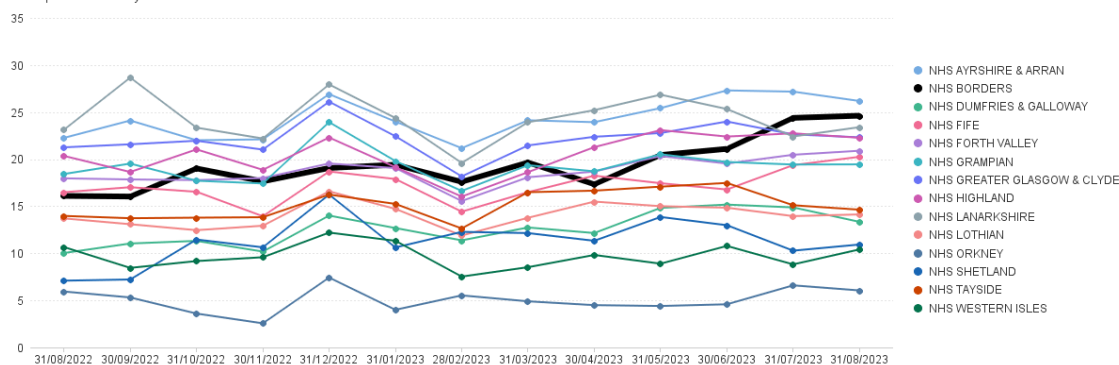
NHS Borders: Number of Paid Line Items in Month (Aug 2023)



Community Pharmacy Urgent Supply (CPUS) Items per '000 List Size by Board

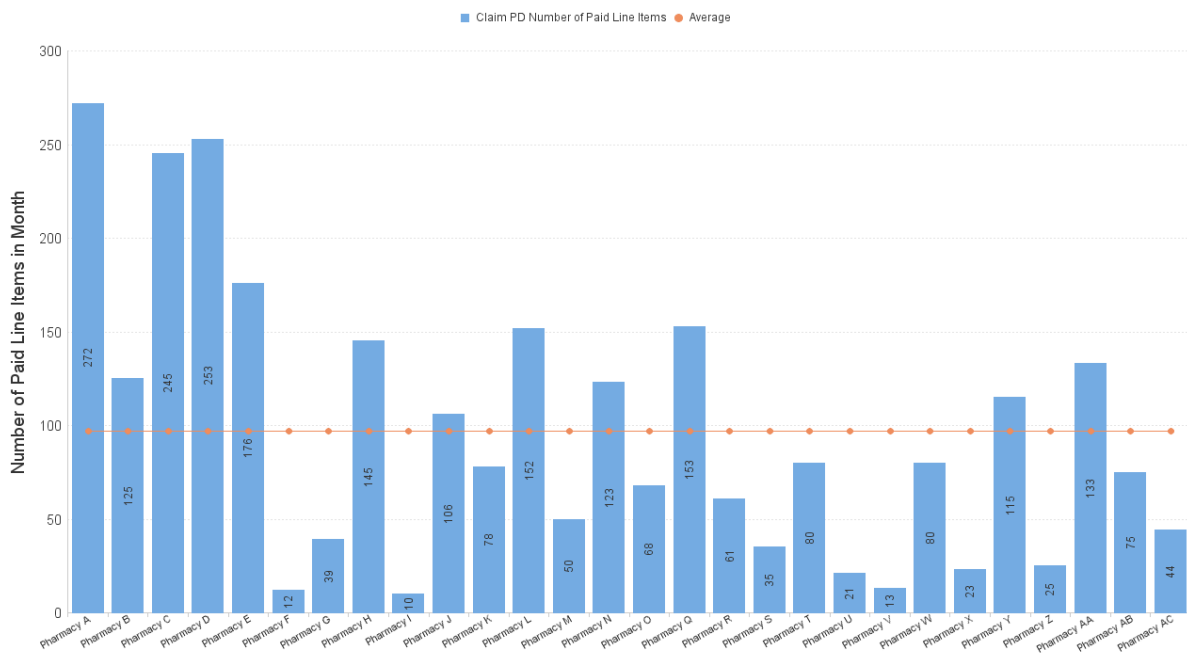
Items dispensed under sub-service flag CPUS

Items per '000 LS by Paid Date and Presc Health Board Name



	Aug 22	Sep 22	Oct 22	Nov 22	Dec 22	Jan 23	Feb 23	Mar 23	Apr 23	May 23	Jun 23	Jul 23	Aug 23
NHS AYRSHIRE & ARRAN	22.26	24.11	22.01	22.10	26.90	23.99	21.17	24.13	23.93	25.42	27.30	27.17	26.18
NHS BORDERS	16.10	16.03	19.01	17.64	19.06	19.41	17.59	19.65	17.33	20.44	21.09	24.38	24.62
NHS DUMFRIES & GALLOWAY	10.03	11.04	11.32	10.18	14.01	12.68	11.38	12.74	12.15	14.82	15.17	14.88	13.34
NHS FIFE	16.49	17.02	16.54	13.94	18.69	17.89	14.42	16.49	18.25	17.44	16.78	19.37	20.25
NHS FORTH VALLEY	17.96	17.85	17.78	18.00	19.54	19.05	15.55	18.08	18.68	20.33	19.53	20.47	20.89
NHS GRAMPIAN	18.42	19.53	17.71	17.42	23.93	19.80	16.63	19.36	18.71	20.52	19.70	19.43	19.45
NHS GREATER GLASGOW & CLYDE	21.26	21.58	21.96	21.01	26.11	22.43	18.17	21.46	22.38	22.78	24.00	22.63	22.32
NHS HIGHLAND	20.34	18.64	21.04	18.87	22.30	19.15	16.03	18.62	21.28	23.09	22.40	22.75	22.27
NHS LANARKSHIRE	23.13	28.66	23.35	22.19	27.93	24.38	19.60	23.92	25.20	26.85	25.33	22.41	23.40
NHS Lothian	13.71	13.09	12.46	12.93	16.58	14.72	11.89	13.77	15.49	15.00	14.84	13.95	14.13
NHS ORKNEY	5.94	5.31	3.60	2.56	7.42	4.00	5.53	4.90	4.49	4.40	4.58	6.60	6.06
NHS SHETLAND	7.09	7.22	11.46	10.63	16.23	10.62	12.28	12.15	11.33	13.86	12.99	10.28	10.93
NHS TAYSIDE	13.97	13.73	13.79	13.83	16.24	15.25	12.64	16.49	16.65	17.08	17.48	15.10	14.64
NHS WESTERN ISLES	10.66	8.45	9.18	9.58	12.20	11.33	7.53	8.52	9.82	8.90	10.78	8.82	10.41

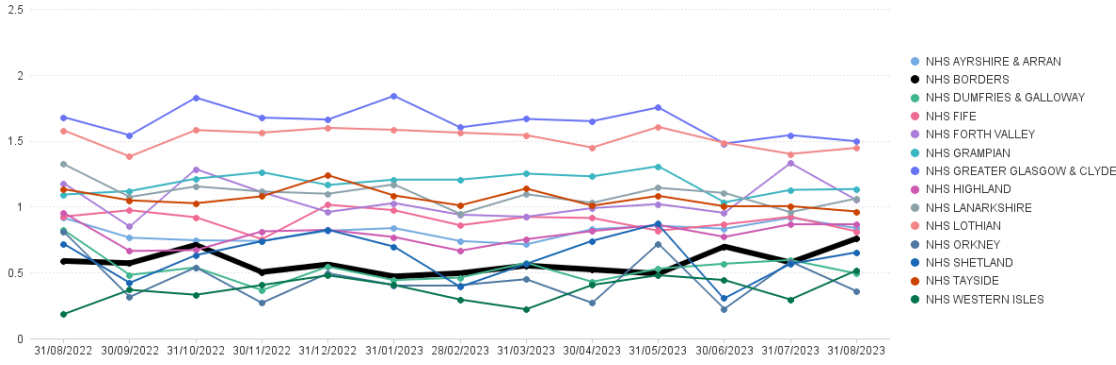
NHS Borders: Number of Paid Line Items in Month (Aug 2023)



Emergency Hormonal Contraception Items per '000 List Size by Board

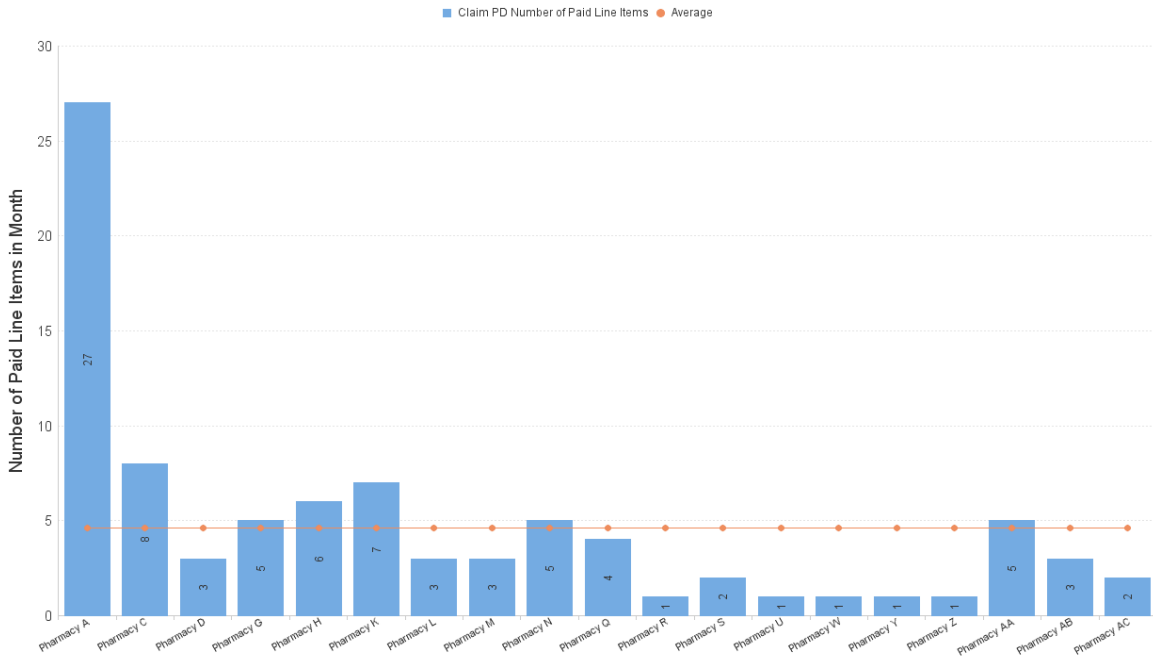
Items dispensed under sub-service flag EHC

Items per '000 LS by Paid Date and Presc Health Board Name



	Aug 22	Sep 22	Oct 22	Nov 22	Dec 22	Jan 23	Feb 23	Mar 23	Apr 23	May 23	Jun 23	Jul 23	Aug 23
NHS AYRSHIRE & ARRAN	0.91	0.76	0.74	0.74	0.82	0.84	0.74	0.71	0.83	0.86	0.83	0.92	0.84
NHS BORDERS	0.59	0.57	0.71	0.50	0.56	0.47	0.50	0.55	0.52	0.49	0.70	0.58	0.76
NHS DUMFRIES & GALLOWAY	0.82	0.48	0.54	0.37	0.55	0.44	0.46	0.57	0.43	0.53	0.57	0.60	0.49
NHS FIFE	0.92	0.97	0.92	0.75	1.01	1.01	0.97	0.86	0.92	0.91	0.82	0.87	0.81
NHS FORTH VALLEY	1.18	0.85	1.28	1.11	0.96	1.03	0.94	0.92	0.99	1.02	0.95	1.33	1.05
NHS GRAMPIAN	1.09	1.12	1.21	1.26	1.16	1.20	1.20	1.25	1.23	1.31	1.03	1.13	1.13
NHS GREATER GLASGOW & CLYDE	1.68	1.54	1.83	1.68	1.66	1.84	1.60	1.67	1.65	1.75	1.48	1.54	1.50
NHS HIGHLAND	0.95	0.66	0.67	0.81	0.82	0.77	0.67	0.75	0.81	0.86	0.77	0.87	0.87
NHS LANARKSHIRE	1.32	1.07	1.15	1.12	1.10	1.17	0.95	1.09	1.03	1.14	1.10	0.96	1.06
NHS LOTHIAN	1.58	1.38	1.58	1.56	1.60	1.58	1.56	1.54	1.45	1.61	1.48	1.40	1.45
NHS ORKNEY	0.81	0.32	0.54	0.27	0.49	0.40	0.40	0.45	0.27	0.72	0.22	0.58	0.36
NHS SHETLAND	0.72	0.42	0.63	0.74	0.82	0.70	0.39	0.57	0.74	0.87	0.31	0.57	0.65
NHS TAYSIDE	1.13	1.05	1.03	1.08	1.24	1.08	1.01	1.14	1.01	1.08	1.00	1.00	0.96
NHS WESTERN ISLES	0.18	0.37	0.33	0.41	0.48	0.41	0.30	0.22	0.41	0.48	0.44	0.30	0.52

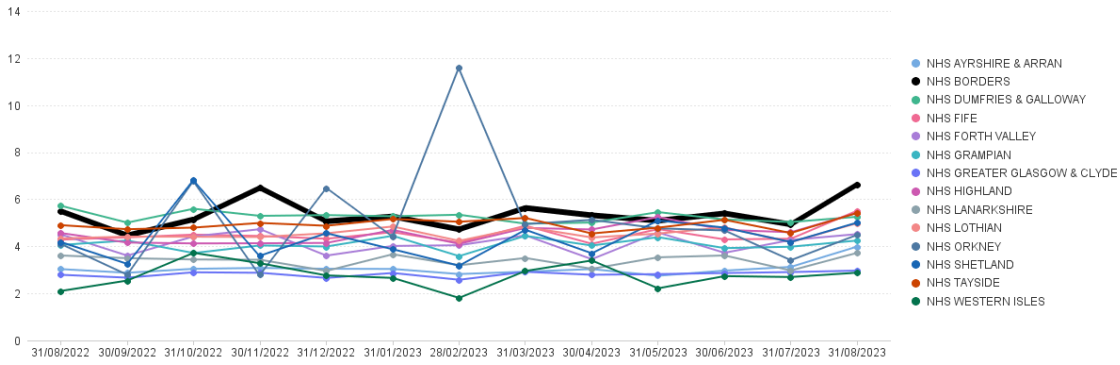
NHS Borders: Number of Paid Line Items in Month (Aug 2023)



Gluten Free Food Items per '000 List Size by Board

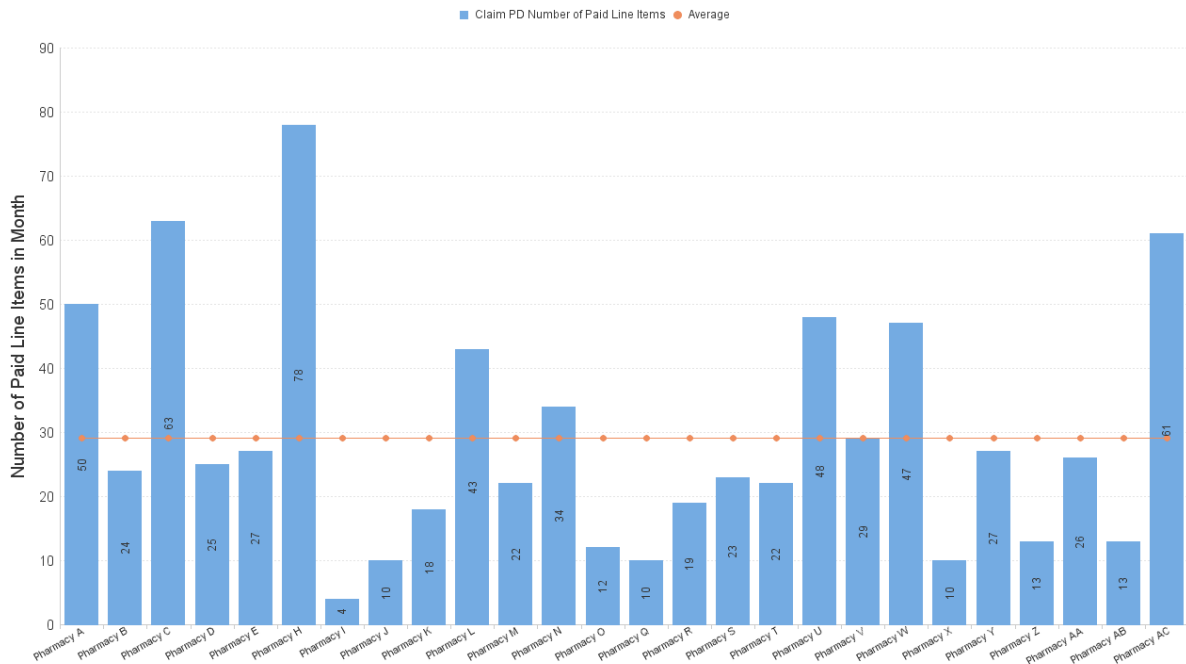
Items dispensed under sub-service flag GFF

Items per '000 LS by Paid Date and Presc Health Board Name



	Aug 22	Sep 22	Oct 22	Nov 22	Dec 22	Jan 23	Feb 23	Mar 23	Apr 23	May 23	Jun 23	Jul 23	Aug 23
NHS AYRSHIRE & ARRAN	3.03	2.88	3.04	3.08	3.05	3.04	2.82	2.92	3.03	2.75	2.97	3.13	3.99
NHS BORDERS	5.49	4.46	5.15	6.48	5.06	5.27	4.72	5.63	5.32	5.09	5.40	4.93	6.63
NHS DUMFRIES & GALLOWAY	5.72	5.01	5.60	5.29	5.33	5.28	5.34	4.96	5.01	5.45	5.14	5.03	5.26
NHS FIFE	4.28	4.38	4.50	4.44	4.32	4.60	4.16	4.88	4.11	4.73	4.29	4.32	5.51
NHS FORTH VALLEY	4.50	3.61	4.42	4.73	3.61	4.02	4.05	4.46	3.45	4.59	3.72	4.27	4.52
NHS GRAMPIAN	4.06	4.25	3.71	4.04	3.99	4.45	3.58	4.44	4.03	4.39	3.92	3.98	4.25
NHS GREATER GLASGOW & CLYDE	2.79	2.67	2.90	2.88	2.66	2.87	2.58	2.92	2.79	2.82	2.86	2.91	2.97
NHS HIGHLAND	4.56	4.16	4.12	4.13	4.14	4.69	4.10	4.78	4.72	5.24	4.70	4.60	5.42
NHS LANARKSHIRE	3.61	3.50	3.44	3.43	2.96	3.66	3.19	3.50	3.04	3.53	3.61	2.97	3.72
NHS LoTHIAN	4.34	4.41	4.41	4.40	4.55	4.84	4.23	4.83	4.38	4.54	4.80	4.18	4.98
NHS ORKNEY	4.10	2.79	6.79	2.79	6.48	4.41	11.60	4.94	5.12	4.76	4.67	3.41	4.49
NHS SHETLAND	4.18	3.25	6.83	3.60	4.56	3.87	3.18	4.70	3.70	5.10	4.79	4.18	5.01
NHS TAYSIDE	4.90	4.73	4.80	4.99	4.87	5.16	5.04	5.20	4.55	4.79	5.13	4.57	5.42
NHS WESTERN ISLES	2.10	2.55	3.72	3.28	2.76	2.66	1.81	2.95	3.40	2.22	2.73	2.70	2.88

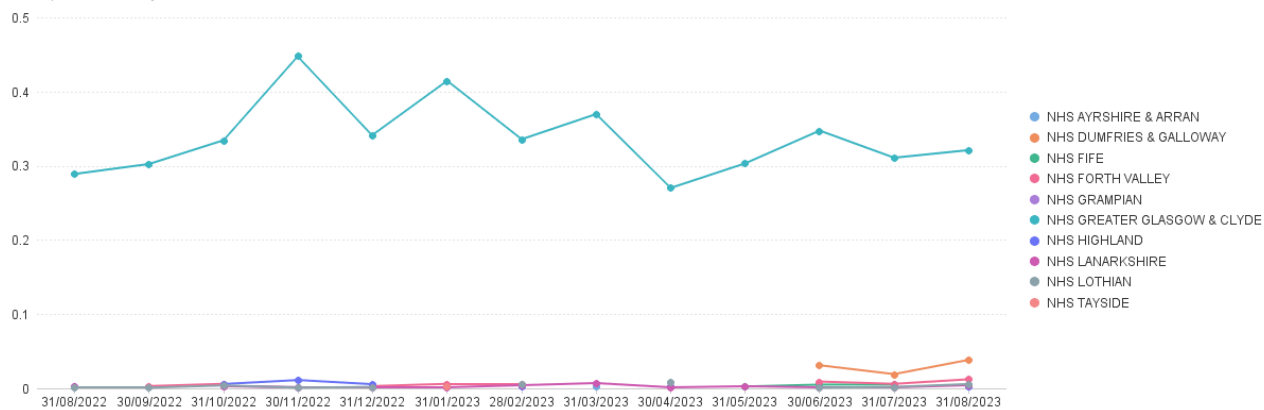
NHS Borders: Number of Paid Line Items in Month (Aug 2023)



Healthy Start Vitamins Items per '000 List Size by Board

Items dispensed under sub-service flag HSV

Items per '000 LS by Paid Date and Presc Health Board Name



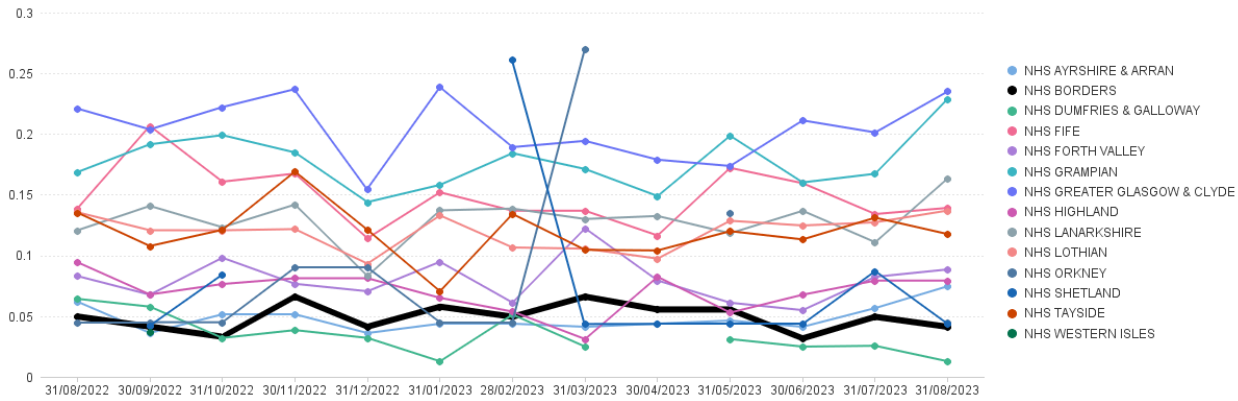
	Aug 22	Sep 22	Oct 22	Nov 22	Dec 22	Jan 23	Feb 23	Mar 23	Apr 23	May 23	Jun 23	Jul 23	Aug 23
NHS AYRSHIRE & ARRAN								0.00					0.00
NHS DUMFRIES & GALLOWAY											0.03	0.02	0.04
NHS FIFE										0.00	0.01	0.01	
NHS FORTH VALLEY		0.00	0.01		0.00	0.01	0.01		0.00		0.01	0.01	0.01
NHS GRAMPIAN			0.00	0.00									
NHS GREATER GLASGOW & CLYDE	0.29	0.30	0.33	0.45	0.34	0.41	0.34	0.37	0.27	0.30	0.35	0.31	0.32
NHS HIGHLAND	0.00		0.01	0.01	0.01		0.00		0.00				0.00
NHS LANARKSHIRE	0.00		0.00	0.00	0.00	0.00	0.00	0.01	0.00	0.00	0.00	0.00	0.00
NHS Lothian	0.00	0.00	0.00	0.00	0.00		0.01		0.01		0.00	0.00	0.01
NHS TAYSIDE						0.00							

No Community Pharmacy graph included as number so low.

MenB Paracetamol Items per '000 List Size by Board

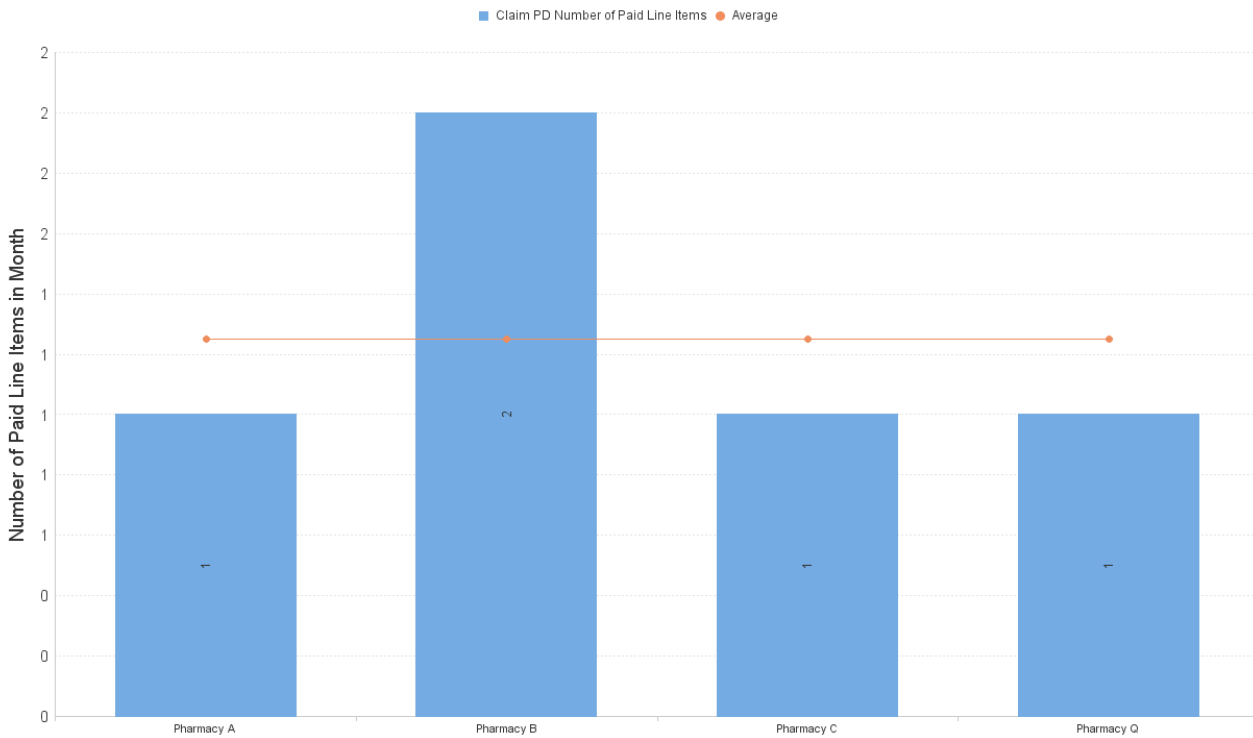
Items dispensed under sub-service flag MVP

Items per '000 LS by Paid Date and Presc Health Board Name



	Aug 22	Sep 22	Oct 22	Nov 22	Dec 22	Jan 23	Feb 23	Mar 23	Apr 23	May 23	Jun 23	Jul 23	Aug 23
NHS AYRSHIRE & ARRAN	0.06	0.04	0.05	0.05	0.04	0.04	0.04	0.04	0.04	0.05	0.04	0.06	0.07
NHS BORDERS	0.05	0.04	0.03	0.07	0.04	0.06	0.05	0.07	0.06	0.06	0.03	0.05	0.04
NHS DUMFRIES & GALLOWAY	0.06	0.06	0.03	0.04	0.03	0.01	0.05	0.02		0.03	0.02	0.03	0.01
NHS FIFE	0.14	0.21	0.16	0.17	0.11	0.15	0.14	0.14	0.12	0.17	0.16	0.13	0.14
NHS FORTH VALLEY	0.08	0.07	0.10	0.08	0.07	0.09	0.06	0.12	0.08	0.06	0.05	0.08	0.09
NHS GRAMPIAN	0.17	0.19	0.20	0.18	0.14	0.16	0.18	0.17	0.15	0.20	0.16	0.17	0.23
NHS GREATER GLASGOW & CLYDE	0.22	0.20	0.22	0.24	0.15	0.24	0.19	0.19	0.18	0.17	0.21	0.20	0.24
NHS HIGHLAND	0.09	0.07	0.08	0.08	0.08	0.07	0.05	0.03	0.08	0.05	0.07	0.08	0.08
NHS LANARKSHIRE	0.12	0.14	0.12	0.14	0.08	0.14	0.14	0.13	0.13	0.12	0.14	0.11	0.16
NHS Lothian	0.14	0.12	0.12	0.12	0.09	0.13	0.11	0.11	0.10	0.13	0.12	0.13	0.14
NHS ORKNEY	0.05	0.05	0.04	0.09	0.09	0.04	0.04	0.27		0.13			0.04
NHS SHETLAND		0.04	0.08					0.26	0.04	0.04	0.04	0.09	0.04
NHS TAYSIDE	0.14	0.11	0.12	0.17	0.12	0.07	0.13	0.10	0.10	0.12	0.11	0.13	0.12
NHS WESTERN ISLES		0.04											

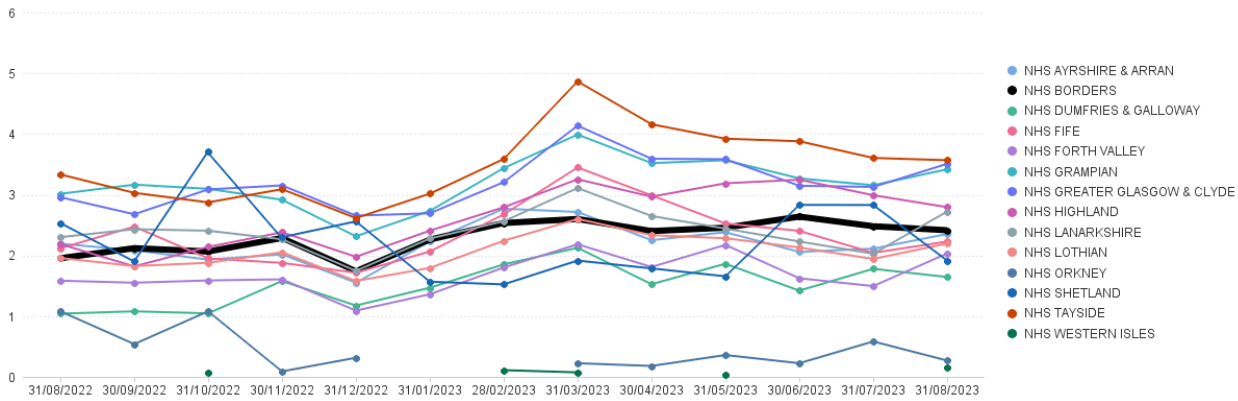
NHS Borders: Number of Paid Line Items in Month (Aug 2023)



Nicotine Replacement Therapy Items per '000 List Size by Board

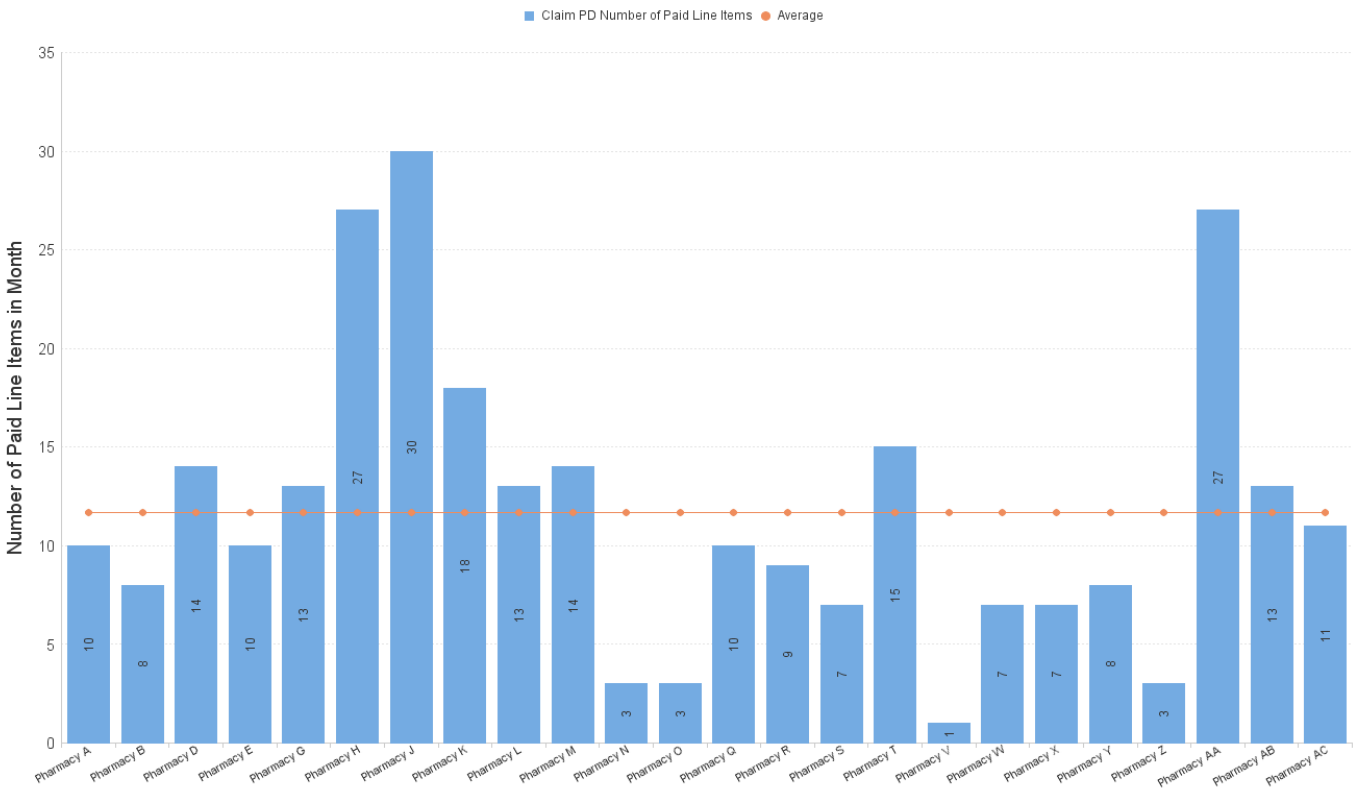
Items dispensed under sub-service flag NRT

Items per '000 LS by Paid Date and Presc Health Board Name



	Aug 22	Sep 22	Oct 22	Nov 22	Dec 22	Jan 23	Feb 23	Mar 23	Apr 23	May 23	Jun 23	Jul 23	Aug 23
NHS AYRSHIRE & ARRAN	2.19	2.09	1.93	2.02	1.55	2.23	2.77	2.72	2.25	2.38	2.06	2.11	2.35
NHS BORDERS	1.95	2.12	2.06	2.29	1.74	2.26	2.53	2.60	2.40	2.46	2.64	2.48	2.42
NHS DUMFRIES & GALLOWAY	1.04	1.08	1.05	1.58	1.17	1.47	1.85	2.13	1.53	1.86	1.42	1.78	1.65
NHS FIFE	2.12	2.47	1.95	1.88	1.72	2.07	2.68	3.45	2.99	2.53	2.40	2.04	2.23
NHS FORTH VALLEY	1.58	1.55	1.59	1.61	1.09	1.36	1.80	2.18	1.81	2.17	1.62	1.50	2.03
NHS GRAMPIAN	3.02	3.17	3.10	2.92	2.32	2.73	3.44	3.99	3.52	3.57	3.27	3.16	3.42
NHS GREATER GLASGOW & CLYDE	2.96	2.68	3.09	3.15	2.66	2.69	3.21	4.14	3.59	3.59	3.15	3.13	3.51
NHS HIGHLAND	2.19	1.82	2.14	2.38	1.98	2.41	2.79	3.26	2.97	3.19	3.25	2.99	2.80
NHS LANARKSHIRE	2.30	2.43	2.41	2.27	1.75	2.28	2.56	3.11	2.65	2.44	2.23	2.03	2.72
NHS Lothian	1.96	1.83	1.88	2.05	1.58	1.79	2.24	2.60	2.33	2.28	2.13	1.94	2.20
NHS ORKNEY	1.08	0.54	1.08	0.09	0.31			0.22	0.18	0.36	0.22	0.58	0.27
NHS SHETLAND	2.53	1.90	3.71	2.30	2.56	1.57	1.52	1.92	1.79	1.66	2.83	2.83	1.92
NHS TAYSIDE	3.33	3.03	2.87	3.09	2.62	3.02	3.59	4.87	4.16	3.92	3.88	3.61	3.57
NHS WESTERN ISLES			0.07					0.11	0.07	0.04			0.15

NHS Borders: Number of Paid Line Items in Month (Aug 2023)



NHS Borders - All UCF claims by Pharmacy, Aug 2023

		Other Service	Other Service	Other Service	Other Service	Other Service	Other Service	Other Service	Other Service	Other Service	Other Service	Other Service	Pharmacy First Service	Pharmacy First Service	Pharmacy First Service	Pharmacy First Service	
		BRC	CPUS	EBC	EHC	GFF	HFG	MVP	NRT	SHG	SIG	SIR	IPG	M	UTG	UTR	
Pharmacy B	31/08/2023		272	1	27	50	1	1	10		7		4	401	37	1	
Pharmacy C	31/08/2023		125			24		2	8		2			231	6		
Pharmacy D	31/08/2023		245		8	63		1			5		1	181	15		
Pharmacy E	31/08/2023		253	1	3	25			14	4	3		1	159	13		
Pharmacy F	31/08/2023	1	176	1		27			10		6		2	480	12		
Pharmacy G	31/08/2023		12											5			
Pharmacy H	31/08/2023		39		5				13				1	19	2		
Pharmacy I	31/08/2023		145		6	78			27	1	18	1	12	295	27		
Pharmacy J	31/08/2023		10			4					1			11			
Pharmacy K	31/08/2023		106	1		10			30	1	2		2	234	5		
Pharmacy L	31/08/2023		78		7	18			18		1		1	222	5		
Pharmacy M	31/08/2023		152		3	43			13		1			356	11		
Pharmacy N	31/08/2023		50	1	3	22			14		1		2	131	2		
Pharmacy O	31/08/2023		123		5	34			3		2		1	157	11		
Pharmacy P	31/08/2023		68			12			3					81	3		
Pharmacy R	31/08/2023		153		4	10		1	10					91	6		
Pharmacy S	31/08/2023		61	1	1	19			9		3			270	11		
Pharmacy T	31/08/2023		35		2	23			7		3		1	307	7		
Pharmacy U	31/08/2023		80			22			15					129	5		
Pharmacy V	31/08/2023		21		1	48					6		1	91	5		
Pharmacy W	31/08/2023		13			29			1				1	30	1		
Pharmacy X	31/08/2023		80		1	47			7	3				97	2		
Pharmacy Y	31/08/2023		23			10			7		1			77			
Pharmacy Z	31/08/2023		115		1	27			8					68	2		
Pharmacy AA	31/08/2023		25		1	13			3				1	24	2		
Pharmacy AB	31/08/2023		133		5	26			27		1			330	5		
Pharmacy AC	31/08/2023		75		3	13			13		1		1	214	2		
Pharmacy A	31/08/2023		44		2	61			11		3			112	5		