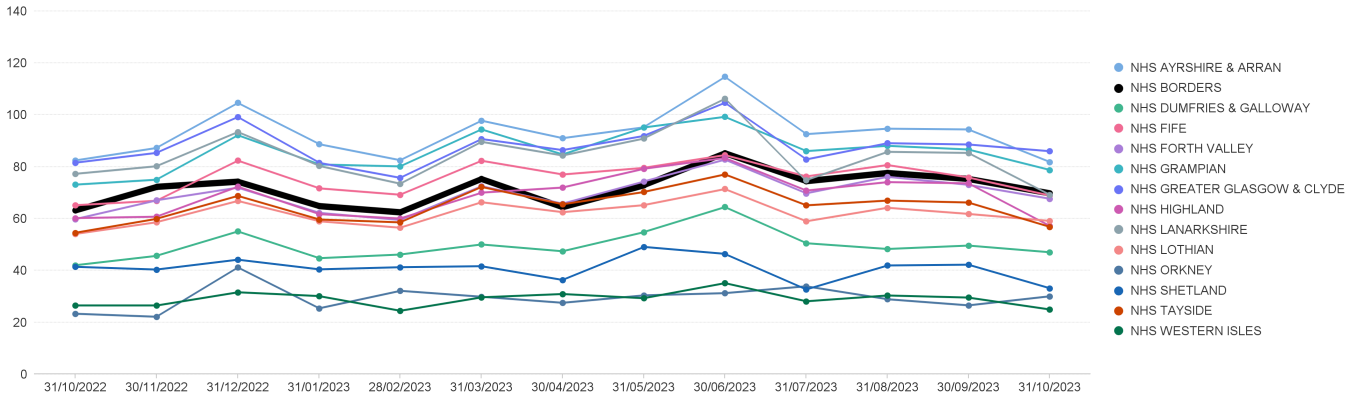


# All UCF Claims - Items per '000 List Size by Board, up to October 2023

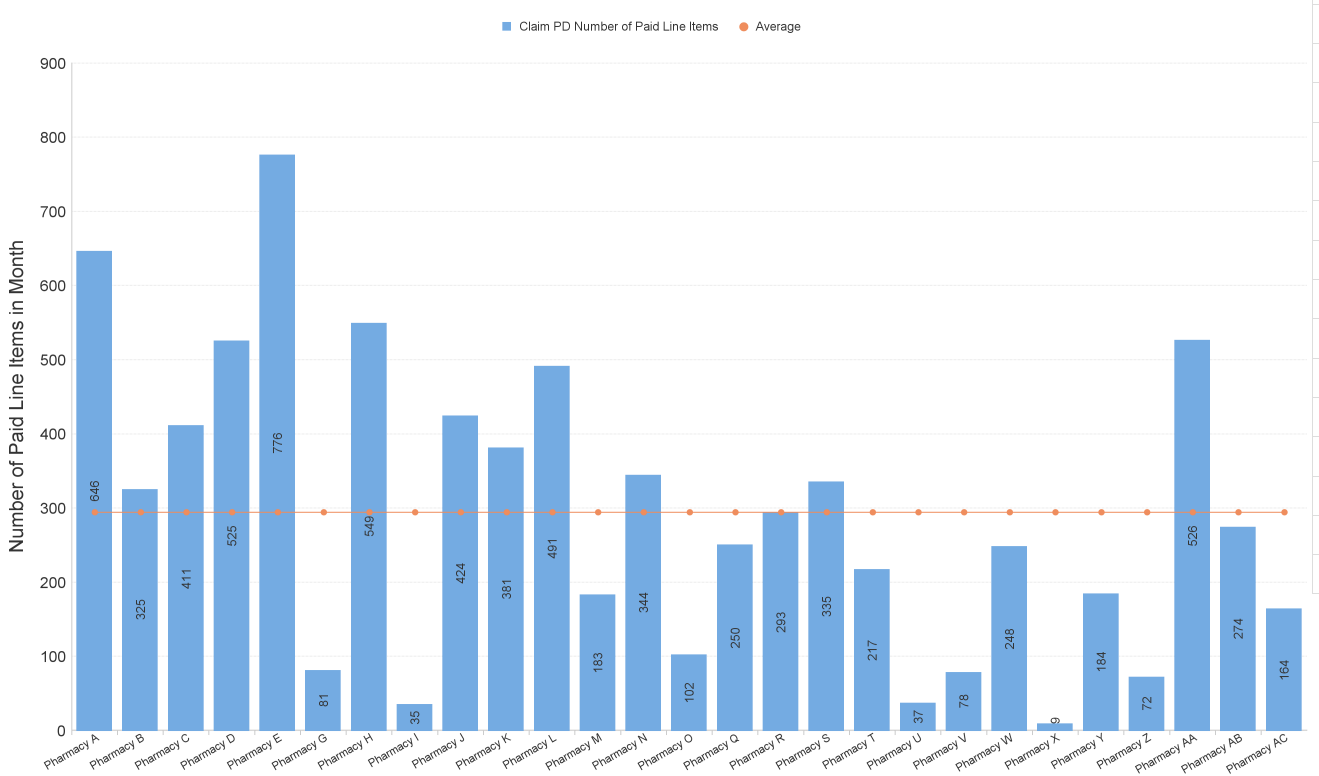
All items claimed on UCF forms, including all Pharmacy First sub-services, CPUS, EHC, GFF, HSV, MVP and NRT.

Items per '000 LS by Paid Date and Presc Health Board Name



	Oct 22	Nov 22	Dec 22	Jan 23	Feb 23	Mar 23	Apr 23	May 23	Jun 23	Jul 23	Aug 23	Sep 23	Oct 23
NHS AYRSHIRE & ARRAN	82.40	87.24	104.63	88.70	82.48	97.77	90.98	95.19	114.68	92.54	94.65	94.36	81.78
NHS BORDERS	63.20	72.30	74.30	64.89	62.48	75.36	64.43	72.90	85.30	74.48	77.64	75.35	69.79
NHS DUMFRIES & GALLOWAY	42.03	45.66	55.10	44.75	46.16	50.05	47.41	54.79	64.48	50.53	48.29	49.62	47.03
NHS FIFE	65.16	66.89	82.38	71.67	69.19	82.32	76.99	79.55	84.50	76.24	80.65	75.85	68.87
NHS FORTH VALLEY	59.80	67.06	71.95	62.23	59.47	72.51	65.74	74.30	82.76	69.72	76.11	73.00	67.64
NHS GRAMPIAN	73.09	75.00	92.18	80.87	80.11	94.43	84.69	95.10	99.24	86.01	88.05	86.62	78.73
NHS GREATER GLASGOW & CLYDE	81.54	85.34	99.21	81.52	75.68	90.68	86.38	91.87	104.69	82.78	89.06	88.56	85.96
NHS HIGHLAND	60.19	60.74	72.34	61.74	60.03	70.00	71.97	79.20	83.38	70.79	74.06	73.60	57.13
NHS LANARKSHIRE	77.25	80.19	93.42	80.33	73.42	89.61	84.29	90.85	106.23	74.78	85.73	85.30	69.13
NHS Lothian	54.08	58.62	66.84	58.99	56.48	66.33	62.47	65.19	71.41	58.95	64.19	61.80	59.11
NHS ORKNEY	23.35	22.18	41.25	25.40	32.19	29.89	27.55	30.43	31.28	33.92	28.94	26.56	30.08
NHS SHETLAND	41.43	40.37	44.19	40.45	41.27	41.67	36.34	49.11	46.41	32.67	41.95	42.25	33.14
NHS TAYSIDE	54.54	59.93	68.79	59.66	58.55	72.23	65.52	70.25	77.06	65.11	66.95	66.20	56.79
NHS WESTERN ISLES	26.50	26.50	31.62	30.15	24.47	29.67	30.95	29.32	35.16	28.13	30.38	29.57	24.97

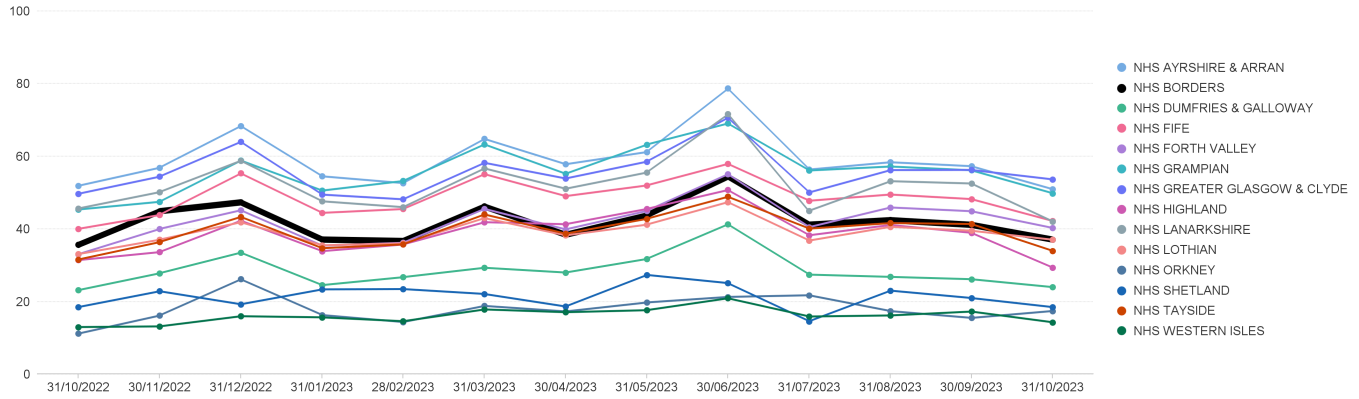
## NHS Borders: Number of Paid Line Items in Month (Oct 2023)



# Pharmacy First Items per '000 List Size by Board

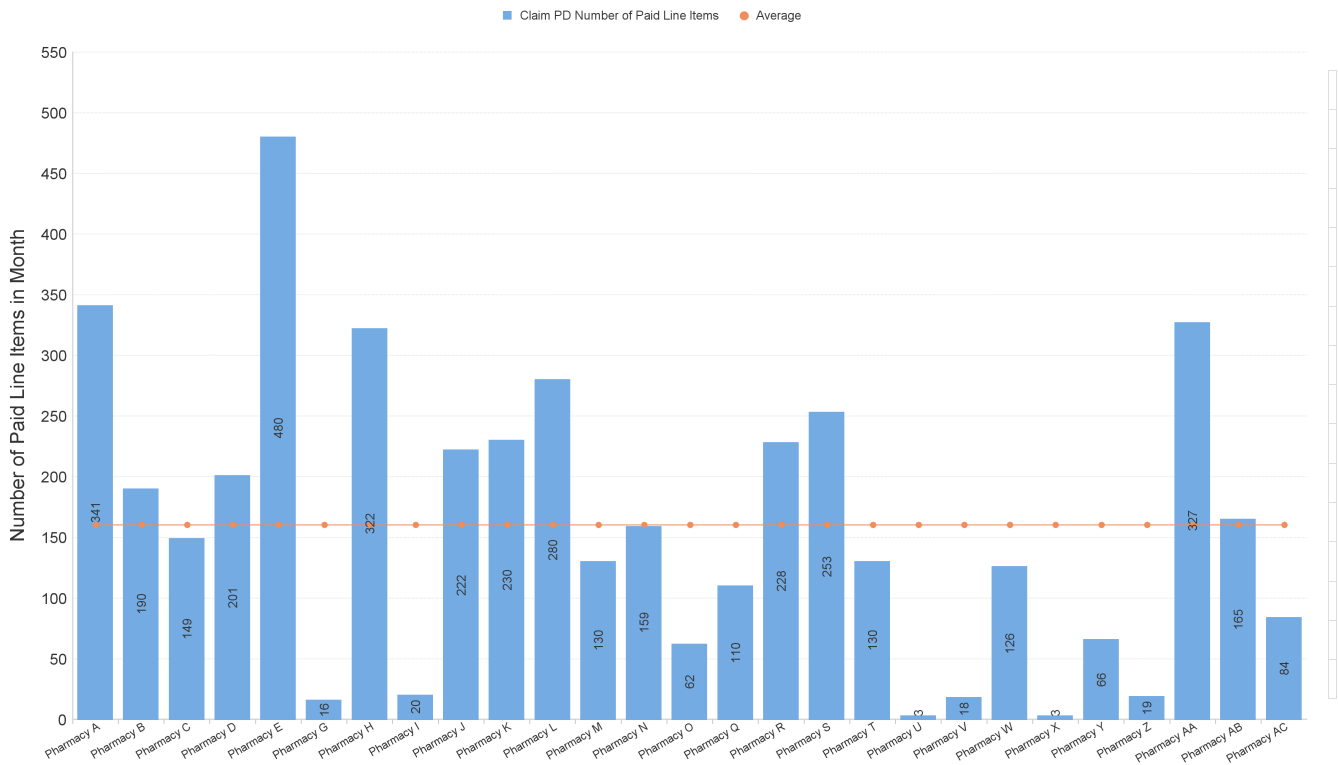
Pharmacy First includes sub-services flags M (Minor Ailments), UTI/G/R (UTI where an item has been dispensed), IPT/G/R (Impetigo where an item has been dispensed)

Items per '000 LS by Paid Date and Presc Health Board Name



	Oct 22	Nov 22	Dec 22	Jan 23	Feb 23	Mar 23	Apr 23	May 23	Jun 23	Jul 23	Aug 23	Sep 23	Oct 23
NHS Ayrshire & Arran	51.88	56.87	68.38	54.51	52.62	64.82	57.81	61.19	78.69	56.36	58.37	57.28	50.92
NHS Borders	35.65	44.93	47.39	37.13	36.74	46.26	38.43	43.77	54.49	41.23	42.47	41.19	37.11
NHS Dumfries & Galloway	23.17	27.82	33.52	24.55	26.75	29.33	28.01	31.76	41.32	27.44	26.82	26.18	23.99
NHS Fife	40.04	43.87	55.34	44.43	45.50	55.12	49.04	51.99	57.94	47.77	49.49	48.23	42.18
NHS Forth Valley	33.06	40.02	45.18	35.42	36.21	45.57	39.88	44.99	55.12	40.50	45.93	44.89	40.27
NHS Grampian	45.36	47.49	58.87	50.56	53.22	63.31	55.17	63.23	69.07	56.10	57.20	56.16	49.81
NHS Greater Glasgow & Clyde	49.68	54.42	64.02	49.47	48.16	58.23	53.89	58.54	70.65	50.03	56.21	56.25	53.64
NHS Highland	31.43	33.64	42.32	33.89	35.74	41.87	41.31	45.52	50.74	38.26	41.12	38.95	29.34
NHS Lanarkshire	45.64	50.16	58.82	47.63	46.00	56.70	51.07	55.55	71.61	45.00	53.16	52.52	42.04
NHS Lothian	33.08	37.07	41.87	35.52	36.04	43.01	38.24	41.20	47.42	36.81	40.61	39.52	37.04
NHS Orkney	11.20	16.19	26.18	16.32	14.39	18.84	17.30	19.78	21.30	21.76	17.41	15.53	17.44
NHS Shetland	18.50	22.87	19.27	23.38	23.47	22.12	18.65	27.37	25.10	14.59	23.04	20.99	18.49
NHS Tayside	31.59	36.41	43.35	34.71	35.77	44.02	38.71	42.81	48.89	40.10	41.64	41.38	33.95
NHS Western Isles	13.01	13.19	15.99	15.68	14.61	17.86	17.10	17.65	20.94	15.91	16.21	17.28	14.31

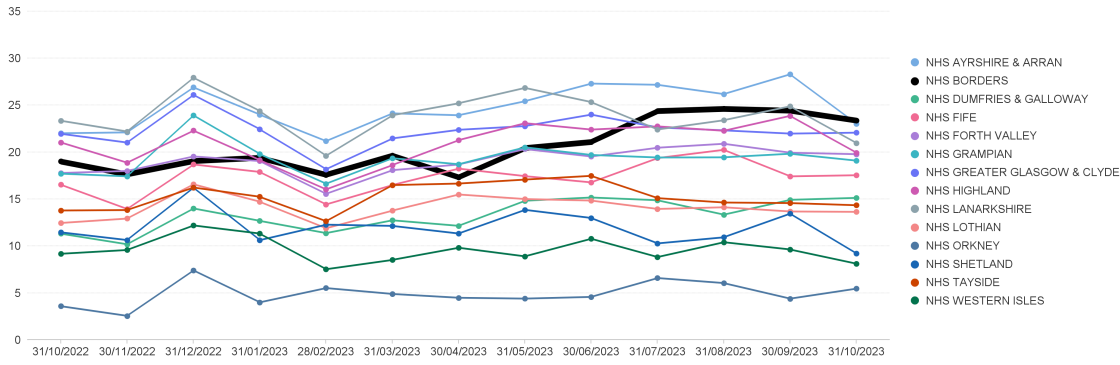
## NHS Borders: Number of Paid Line Items in Month (Oct 2023)



# Community Pharmacy Urgent Supply (CPUS) Items per '000 List Size by Board

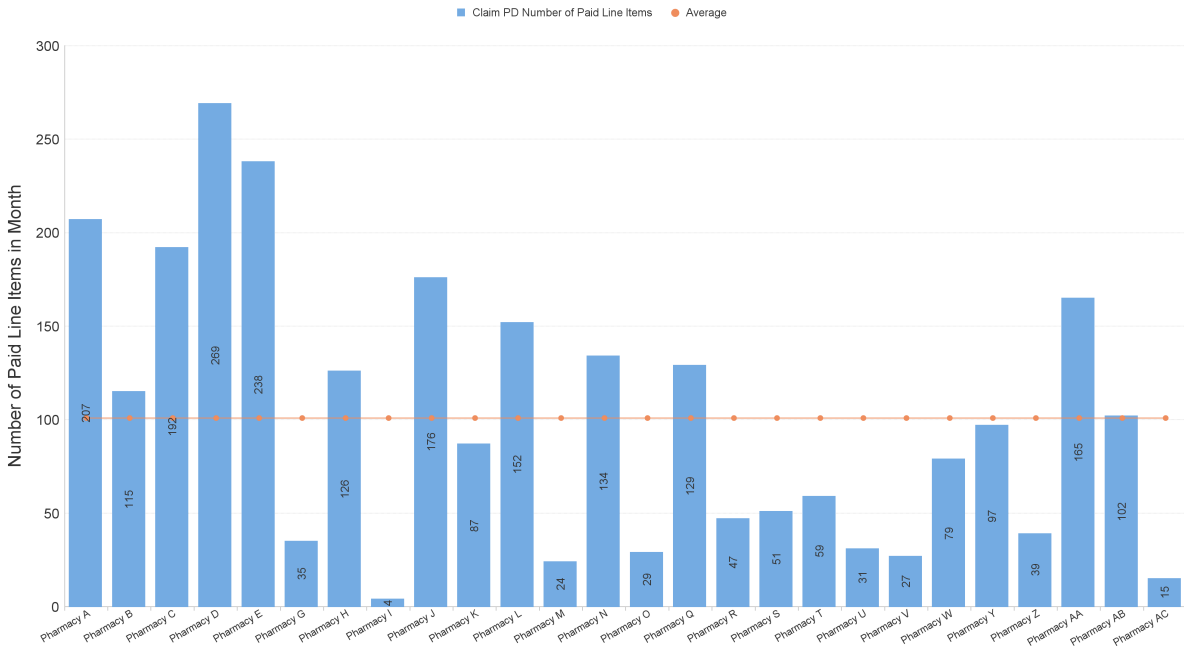
Items dispensed under sub-service flag CPUS

Items per '000 LS by Paid Date and Presc Health Board Name



	Oct 22	Nov 22	Dec 22	Jan 23	Feb 23	Mar 23	Apr 23	May 23	Jun 23	Jul 23	Aug 23	Sep 23	Oct 23
NHS AYRSHIRE & ARRAN	22.01	22.10	26.90	23.99	21.17	24.13	23.93	25.42	27.30	27.17	26.18	28.30	23.01
NHS BORDERS	19.01	17.64	19.06	19.41	17.59	19.65	17.33	20.44	21.09	24.38	24.62	24.43	23.37
NHS DUMFRIES & GALLOWAY	11.32	10.18	14.01	12.68	11.38	12.74	12.15	14.82	15.17	14.88	13.34	14.92	15.13
NHS FIFE	16.54	13.94	18.69	17.89	14.42	16.49	18.25	17.44	16.78	19.37	20.25	17.42	17.54
NHS FORTH VALLEY	17.78	18.00	19.54	19.05	15.55	18.08	18.68	20.33	19.53	20.47	20.89	19.94	19.78
NHS GRAMPIAN	17.71	17.42	23.93	19.80	16.63	19.36	18.71	20.52	19.70	19.43	19.45	19.83	19.09
NHS GREATER GLASGOW & CLYDE	21.96	21.01	26.11	22.43	18.17	21.46	22.38	22.78	24.00	22.63	22.32	21.97	22.07
NHS HIGHLAND	21.04	18.87	22.30	19.15	16.03	18.62	21.28	23.09	22.40	22.75	22.27	23.87	19.93
NHS LANARKSHIRE	23.35	22.19	27.93	24.38	19.60	23.92	25.20	26.85	25.33	22.41	23.40	24.89	20.96
NHS LOTHIAN	12.46	12.93	16.58	14.72	11.89	13.77	15.49	15.00	14.84	13.95	14.13	13.68	13.64
NHS ORKNEY	3.60	2.56	7.42	4.00	5.53	4.90	4.49	4.40	4.58	6.60	6.06	4.40	5.47
NHS SHETLAND	11.46	10.63	16.23	10.62	12.28	12.15	11.33	13.86	12.99	10.28	10.93	13.46	9.20
NHS TAYSIDE	13.79	13.83	16.24	15.25	12.64	16.49	16.65	17.08	17.48	15.10	14.64	14.58	14.35
NHS WESTERN ISLES	9.18	9.58	12.20	11.33	7.53	8.52	9.82	8.90	10.78	8.82	10.41	9.64	8.12

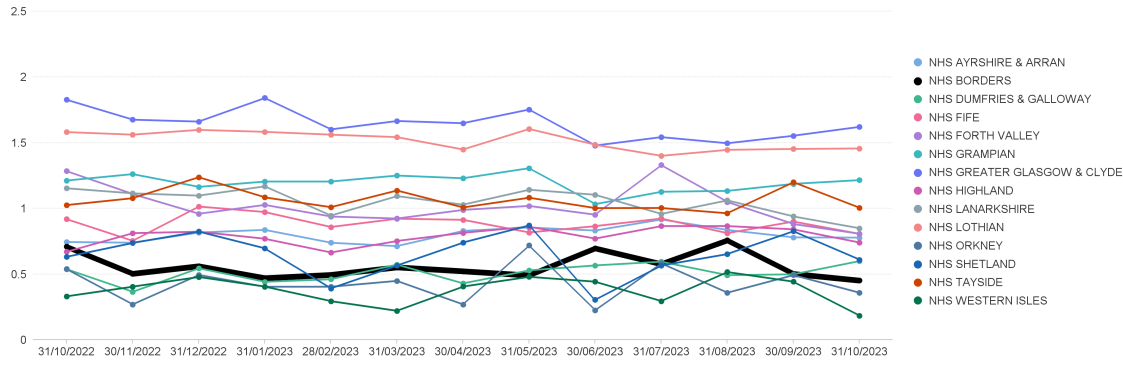
## NHS Borders: Number of Paid Line Items in Month (Oct 2023)



# Emergency Hormonal Contraception Items per '000 List Size by Board

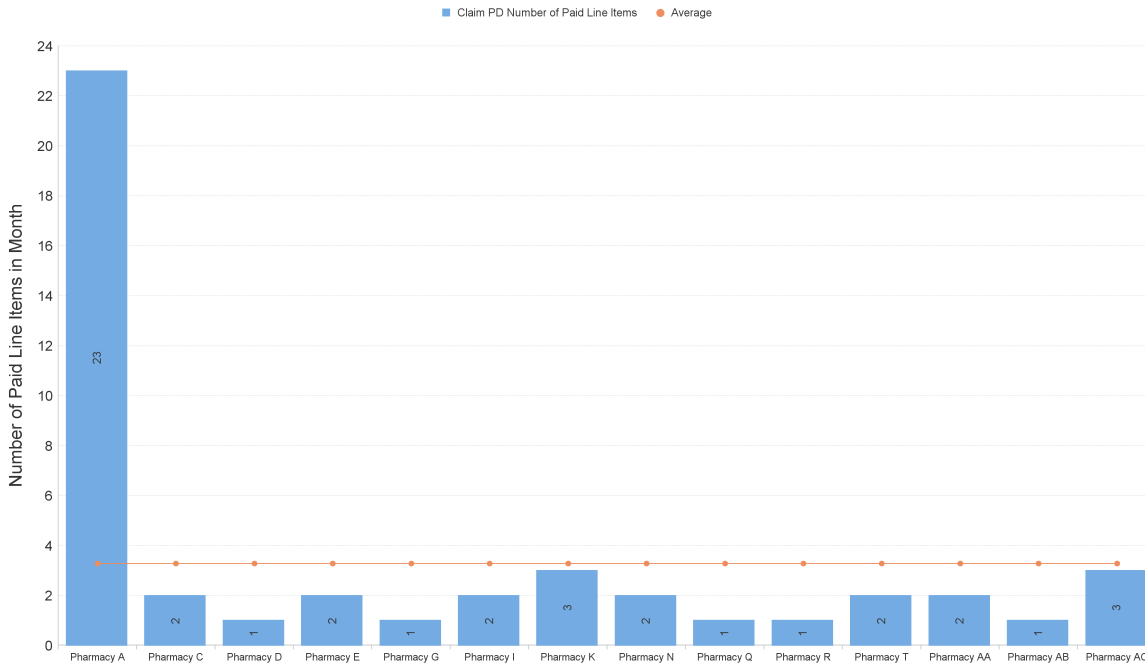
Items dispensed under sub-service flag EHC

Items per '000 LS by Paid Date and Presc Health Board Name



	Oct 22	Nov 22	Dec 22	Jan 23	Feb 23	Mar 23	Apr 23	May 23	Jun 23	Jul 23	Aug 23	Sep 23	Oct 23
NHS AYRSHIRE & ARRAN	0.74	0.74	0.82	0.84	0.74	0.71	0.83	0.86	0.83	0.92	0.84	0.78	0.78
NHS BORDERS	0.71	0.50	0.56	0.47	0.50	0.55	0.52	0.49	0.70	0.58	0.76	0.50	0.45
NHS DUMFRIES & GALLOWAY	0.54	0.37	0.55	0.44	0.46	0.57	0.43	0.53	0.57	0.60	0.49	0.50	0.60
NHS FIFE	0.92	0.75	1.01	0.97	0.86	0.92	0.91	0.82	0.87	0.92	0.81	0.90	0.81
NHS FORTH VALLEY	1.28	1.11	0.96	1.03	0.94	0.92	0.99	1.02	0.95	1.33	1.05	0.88	0.81
NHS GRAMPIAN	1.21	1.26	1.16	1.20	1.20	1.25	1.23	1.31	1.03	1.13	1.13	1.19	1.22
NHS GREATER GLASGOW & CLYDE	1.83	1.68	1.66	1.84	1.60	1.67	1.65	1.75	1.48	1.54	1.50	1.55	1.62
NHS HIGHLAND	0.67	0.81	0.82	0.77	0.67	0.75	0.81	0.86	0.77	0.87	0.87	0.84	0.74
NHS LANARKSHIRE	1.15	1.12	1.10	1.17	0.95	1.09	1.03	1.14	1.10	0.96	1.06	0.94	0.85
NHS LOTHIAN	1.58	1.56	1.60	1.58	1.56	1.54	1.45	1.61	1.48	1.40	1.45	1.45	1.46
NHS ORKNEY	0.54	0.27	0.49	0.40	0.40	0.45	0.27	0.72	0.22	0.58	0.36	0.49	0.36
NHS SHETLAND	0.63	0.74	0.82	0.70	0.39	0.57	0.74	0.87	0.31	0.57	0.65	0.83	0.61
NHS TAYSIDE	1.03	1.08	1.24	1.08	1.01	1.14	1.01	1.08	1.00	1.00	0.96	1.20	1.00
NHS WESTERN ISLES	0.33	0.41	0.48	0.41	0.30	0.22	0.41	0.48	0.44	0.30	0.52	0.44	0.18

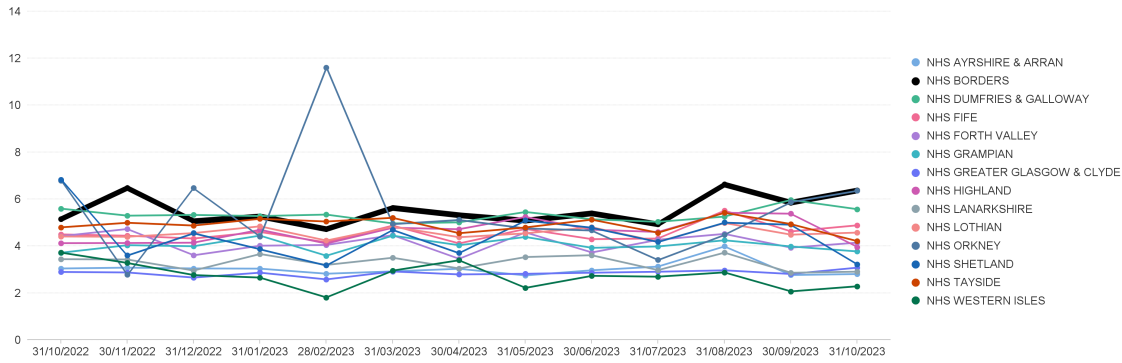
## NHS Borders: Number of Paid Line Items in Month (Oct 2023)



# Gluten Free Food Items per '000 List Size by Board

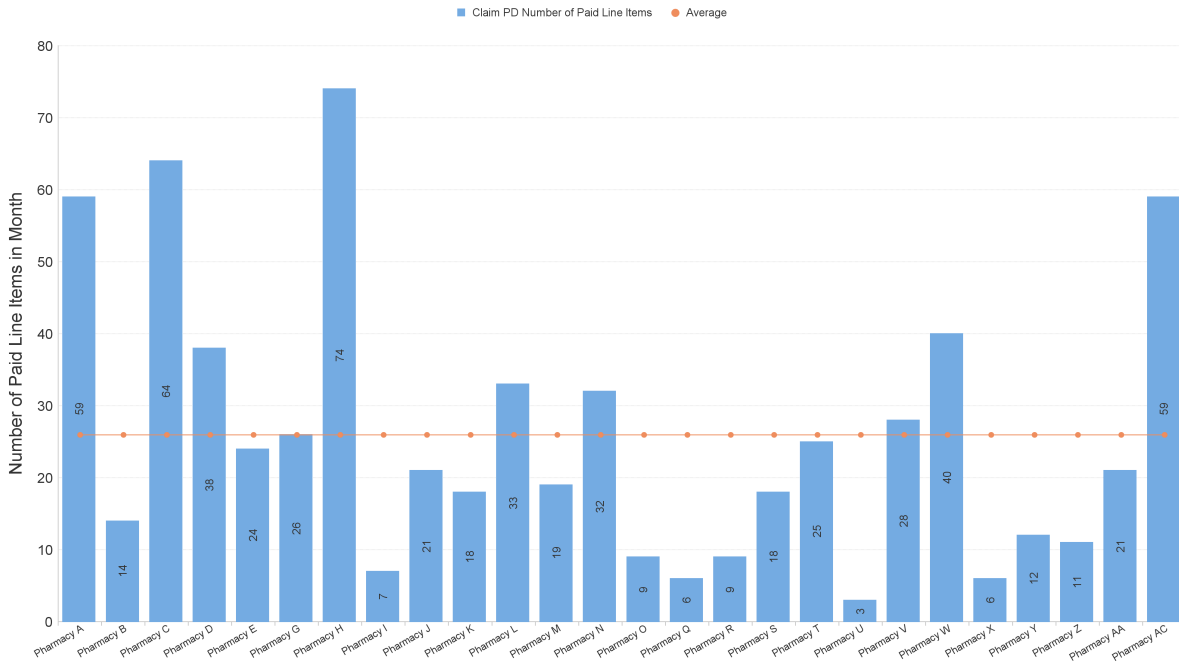
Items dispensed under sub-service flag GFF

Items per '000 LS by Paid Date and Presc Health Board Name



	Oct 22	Nov 22	Dec 22	Jan 23	Feb 23	Mar 23	Apr 23	May 23	Jun 23	Jul 23	Aug 23	Sep 23	Oct 23
NHS AYRSHIRE & ARRAN	3.04	3.08	3.05	3.04	2.82	2.92	3.03	2.75	2.97	3.13	3.99	2.77	2.81
NHS BORDERS	5.15	6.48	5.06	5.27	4.72	5.63	5.32	5.09	5.40	4.93	6.63	5.85	6.37
NHS DUMFRIES & GALLOWAY	5.60	5.29	5.33	5.28	5.34	4.96	5.01	5.45	5.14	5.03	5.26	5.97	5.57
NHS FIFE	4.50	4.44	4.32	4.60	4.16	4.88	4.11	4.73	4.29	4.32	5.51	4.62	4.88
NHS FORTH VALLEY	4.42	4.73	3.61	4.02	4.05	4.46	3.45	4.59	3.72	4.27	4.52	3.93	4.15
NHS GRAMPIAN	3.71	4.04	3.99	4.45	3.58	4.44	4.03	4.39	3.92	3.98	4.25	3.98	3.77
NHS GREATER GLASGOW & CLYDE	2.90	2.88	2.66	2.87	2.58	2.92	2.79	2.82	2.86	2.91	2.97	2.81	3.08
NHS HIGHLAND	4.12	4.13	4.14	4.69	4.10	4.78	4.72	5.24	4.70	4.60	5.42	5.38	3.96
NHS LANARKSHIRE	3.44	3.43	2.96	3.66	3.19	3.50	3.04	3.53	3.61	2.97	3.72	2.86	2.91
NHS LOTHIAN	4.41	4.40	4.55	4.84	4.23	4.83	4.38	4.54	4.80	4.18	4.98	4.48	4.57
NHS ORKNEY	6.79	2.79	6.48	4.41	11.60	4.94	5.12	4.76	4.67	3.41	4.49	5.88	6.37
NHS SHETLAND	6.83	3.60	4.56	3.87	3.18	4.70	3.70	5.10	4.79	4.18	5.01	4.92	3.23
NHS TAYSIDE	4.80	4.99	4.87	5.16	5.04	5.20	4.55	4.79	5.13	4.57	5.42	4.94	4.21
NHS WESTERN ISLES	3.72	3.28	2.76	2.66	1.81	2.95	3.40	2.22	2.73	2.70	2.88	2.07	2.29

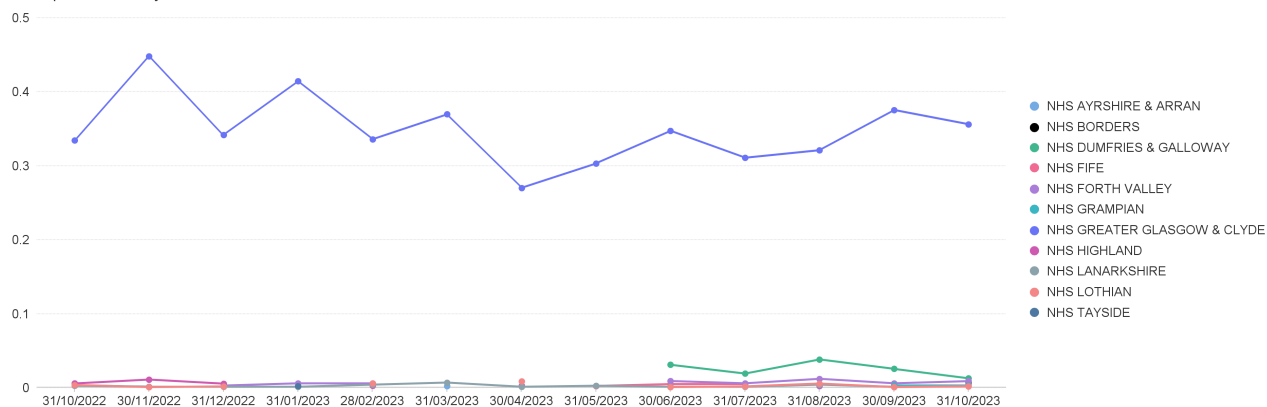
## NHS Borders: Number of Paid Line Items in Month (Oct 2023)



## Healthy Start Vitamins Items per '000 List Size by Board

Items dispensed under sub-service flag HSV

Items per '000 LS by Paid Date and Presc Health Board Name



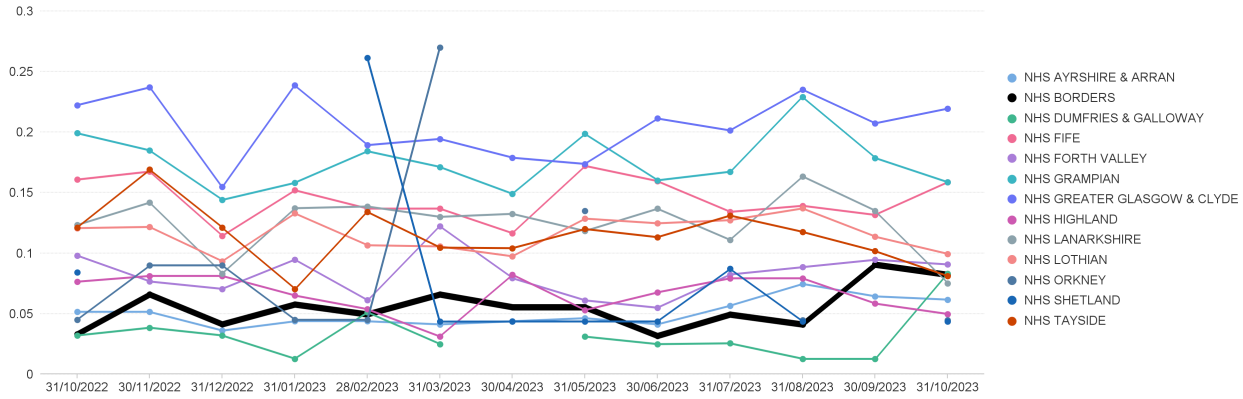
	Oct 22	Nov 22	Dec 22	Jan 23	Feb 23	Mar 23	Apr 23	May 23	Jun 23	Jul 23	Aug 23	Sep 23	Oct 23
NHS AYRSHIRE & ARRAN						0.00					0.00		0.01
NHS BORDERS													0.01
NHS DUMFRIES & GALLOWAY									0.03	0.02	0.04	0.03	0.01
NHS FIFE								0.00	0.01	0.01		0.00	
NHS FORTH VALLEY	0.01		0.00	0.01	0.01		0.00		0.01	0.01	0.01	0.01	0.01
NHS GRAMPIAN	0.00	0.00										0.00	0.00
NHS GREATER GLASGOW & CLYDE	0.33	0.45	0.34	0.41	0.34	0.37	0.27	0.30	0.35	0.31	0.32	0.38	0.36
NHS HIGHLAND	0.01	0.01	0.01		0.00		0.00				0.00		0.00
NHS LANARKSHIRE	0.00	0.00	0.00	0.00	0.00	0.01	0.00	0.00	0.00	0.00	0.00	0.00	0.00
NHS LOTHIAN	0.00	0.00	0.00		0.01		0.01		0.00	0.00	0.01	0.00	0.00
NHS TAYSIDE				0.00									

No Community Pharmacy graph included as number so low.

# MenB Paracetamol Items per '000 List Size by Board

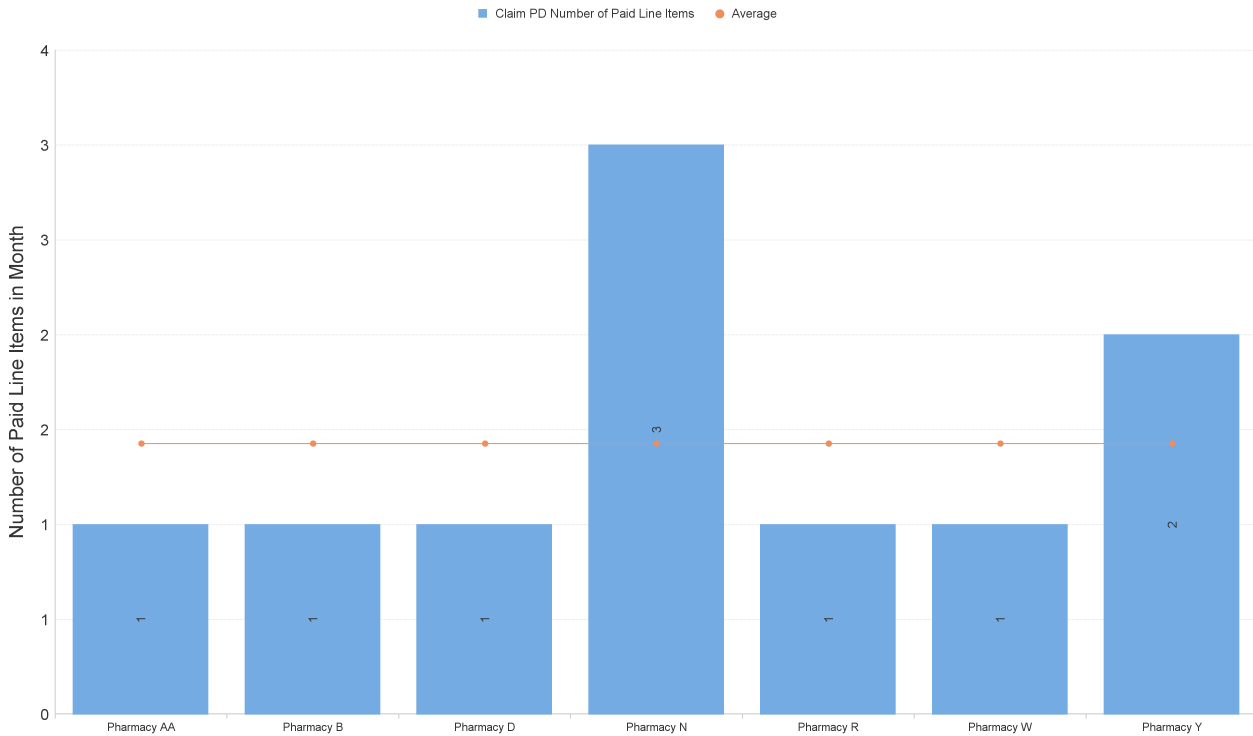
Items dispensed under sub-service flag MVP

Items per '000 LS by Paid Date and Presc Health Board Name



	Oct 22	Nov 22	Dec 22	Jan 23	Feb 23	Mar 23	Apr 23	May 23	Jun 23	Jul 23	Aug 23	Sep 23	Oct 23
NHS AYRSHIRE & ARRAN	0.05	0.05	0.04	0.04	0.04	0.04	0.04	0.05	0.04	0.06	0.07	0.06	0.06
NHS BORDERS	0.03	0.07	0.04	0.06	0.05	0.07	0.06	0.06	0.03	0.05	0.04	0.09	0.08
NHS DUMFRIES & GALLOWAY	0.03	0.04	0.03	0.01	0.05	0.02		0.03	0.02	0.03	0.01	0.01	0.08
NHS FIFE	0.16	0.17	0.11	0.15	0.14	0.14	0.12	0.17	0.16	0.13	0.14	0.13	0.16
NHS FORTH VALLEY	0.10	0.08	0.07	0.09	0.06	0.12	0.08	0.06	0.05	0.08	0.09	0.09	0.09
NHS GRAMPIAN	0.20	0.18	0.14	0.16	0.18	0.17	0.15	0.20	0.16	0.17	0.23	0.18	0.16
NHS GREATER GLASGOW & CLYDE	0.22	0.24	0.15	0.24	0.19	0.19	0.18	0.17	0.21	0.20	0.24	0.21	0.22
NHS HIGHLAND	0.08	0.08	0.08	0.07	0.05	0.03	0.08	0.05	0.07	0.08	0.08	0.06	0.05
NHS LANARKSHIRE	0.12	0.14	0.08	0.14	0.14	0.13	0.13	0.12	0.14	0.11	0.16	0.14	0.08
NHS Lothian	0.12	0.12	0.09	0.13	0.11	0.11	0.10	0.13	0.12	0.13	0.14	0.11	0.10
NHS ORKNEY	0.04	0.09	0.09	0.04	0.04	0.27		0.13			0.04		0.04
NHS SHETLAND	0.08				0.26	0.04	0.04	0.04	0.04	0.09	0.04		0.04
NHS TAYSIDE	0.12	0.17	0.12	0.07	0.13	0.10	0.10	0.12	0.11	0.13	0.12	0.10	0.08

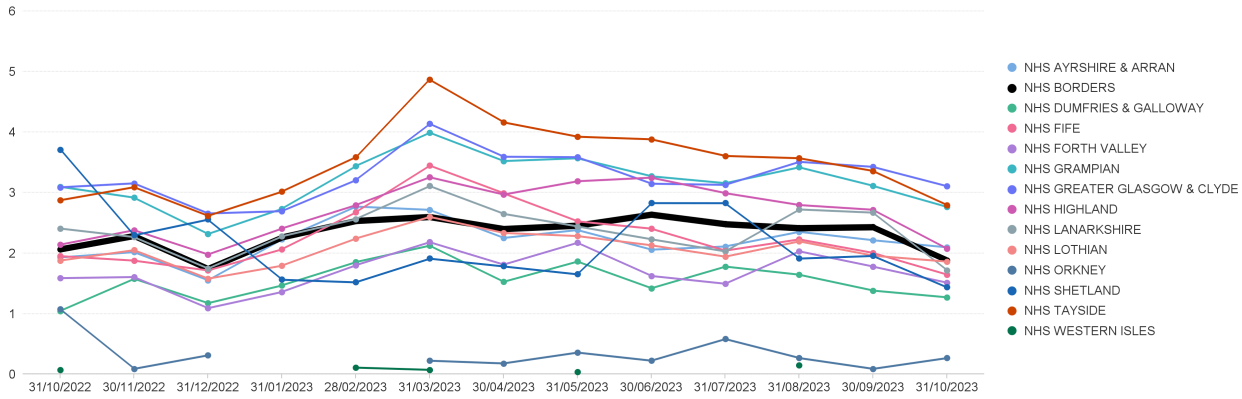
## NHS Borders: Number of Paid Line Items in Month (Oct 2023)



# Nicotine Replacement Therapy Items per '000 List Size by Board

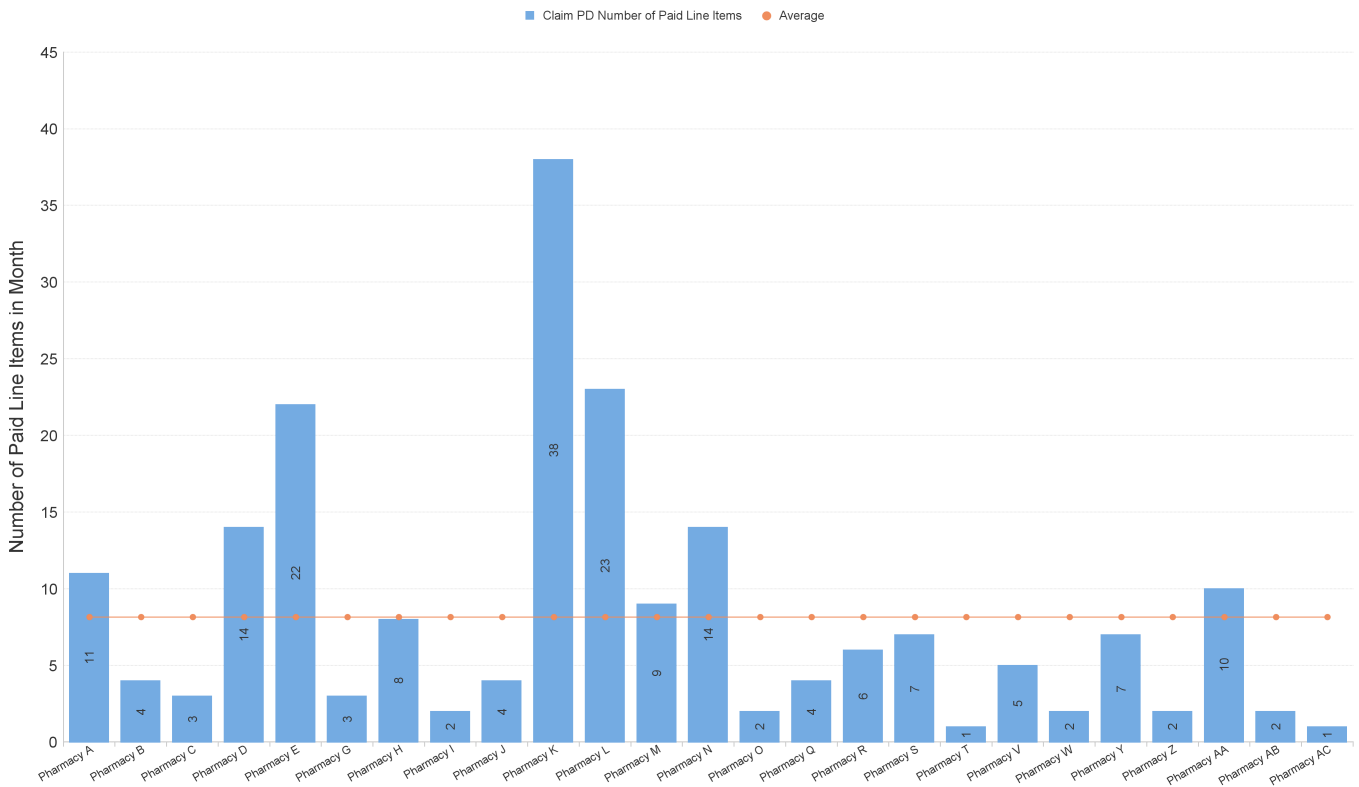
Items dispensed under sub-service flag NRT

Items per '000 LS by Paid Date and Presc Health Board Name



	Oct 22	Nov 22	Dec 22	Jan 23	Feb 23	Mar 23	Apr 23	May 23	Jun 23	Jul 23	Aug 23	Sep 23	Oct 23
NHS AYRSHIRE & ARRAN	1.93	2.02	1.55	2.23	2.77	2.72	2.25	2.38	2.06	2.11	2.35	2.21	2.10
NHS BORDERS	2.06	2.29	1.74	2.26	2.53	2.60	2.40	2.46	2.64	2.48	2.42	2.43	1.88
NHS DUMFRIES & GALLOWAY	1.05	1.58	1.17	1.47	1.85	2.13	1.53	1.86	1.42	1.78	1.65	1.38	1.27
NHS FIFE	1.95	1.88	1.72	2.07	2.68	3.45	2.99	2.53	2.40	2.04	2.23	2.00	1.65
NHS FORTH VALLEY	1.59	1.61	1.09	1.36	1.80	2.18	1.81	2.17	1.62	1.50	2.03	1.78	1.51
NHS GRAMPIAN	3.10	2.92	2.32	2.73	3.44	3.99	3.52	3.57	3.27	3.16	3.42	3.11	2.76
NHS GREATER GLASGOW & CLYDE	3.09	3.15	2.66	2.69	3.21	4.14	3.59	3.59	3.15	3.13	3.51	3.43	3.11
NHS HIGHLAND	2.14	2.38	1.98	2.41	2.79	3.26	2.97	3.19	3.25	2.99	2.80	2.72	2.07
NHS LANARKSHIRE	2.41	2.27	1.75	2.28	2.56	3.11	2.65	2.44	2.23	2.03	2.72	2.67	1.72
NHS Lothian	1.88	2.05	1.58	1.79	2.24	2.60	2.33	2.28	2.13	1.94	2.20	1.96	1.86
NHS ORKNEY	1.08	0.09	0.31			0.22	0.18	0.36	0.22	0.58	0.27	0.09	0.27
NHS SHETLAND	3.71	2.30	2.56	1.57	1.52	1.92	1.79	1.66	2.83	2.83	1.92	1.96	1.44
NHS TAYSIDE	2.87	3.09	2.62	3.02	3.59	4.87	4.16	3.92	3.88	3.61	3.57	3.36	2.79
NHS WESTERN ISLES	0.07					0.11	0.07		0.04		0.15		

## NHS Borders: Number of Paid Line Items in Month (Oct 2023)





## NHS Borders - All UCF claims by Pharmacy, Oct 2023

		Other Service	Other Service	Other Service	Other Service	Other Service	Other Service	Other Service	Other Service	Other Service	Other Service	Other Service	Pharmacy First Service	Pharmacy First Service	Pharmacy First Service	Pharmacy First Service	
		BRC	CPUS	EBC	EHC	GFF	HFG	HSV	MVP	NRT	SHG	SIG	IPG	M	UTG	UTR	
Pharmacy B	31/10/2023		207	1	23	59	1	1			11	1	1	6	319	16	
Pharmacy C	31/10/2023		115			14			1		4		1		186	4	
Pharmacy D	31/10/2023		192		2	64					3		1	1	136	12	
Pharmacy E	31/10/2023		269		1	38			1		14		1		193	8	
Pharmacy F	31/10/2023	1	238		2	24					22	2	7	2	466	12	
Pharmacy H	31/10/2023		35		1	26					3				15	1	
Pharmacy I	31/10/2023		126			74					8	2	17	2	300	19	1
Pharmacy J	31/10/2023		4		2	7					2				18	2	
Pharmacy K	31/10/2023	1	176			21					4				217	5	
Pharmacy L	31/10/2023		87		3	18					38	1	4		221	9	
Pharmacy M	31/10/2023		152	1		33					23	1	1		279	1	
Pharmacy N	31/10/2023		24			19					9		1		128	2	
Pharmacy O	31/10/2023		134		2	32			3		14			3	151	5	
Pharmacy P	31/10/2023		29			9					2				61	1	
Pharmacy R	31/10/2023		129		1	6					4				101	9	
Pharmacy S	31/10/2023		47		1	9			1		6		1	2	219	7	
Pharmacy T	31/10/2023		51			18	3				7	2	1	2	246	5	
Pharmacy U	31/10/2023		59		2	25					1			2	123	5	
Pharmacy V	31/10/2023		31			3									2	1	
Pharmacy W	31/10/2023		27			28					5				18		
Pharmacy X	31/10/2023		79			40			1		2			1	117	8	
Pharmacy Y	31/10/2023					6									3		
Pharmacy Z	31/10/2023		97			12			2		7			1	63	2	
Pharmacy AA	31/10/2023		39			11					2		1		17	2	
Pharmacy AB	31/10/2023		165		2	21			1		10				321	6	
Pharmacy AC	31/10/2023		102		1		2				2		2		162	3	
Pharmacy A	31/10/2023		15		3	59					1		2		78	6	