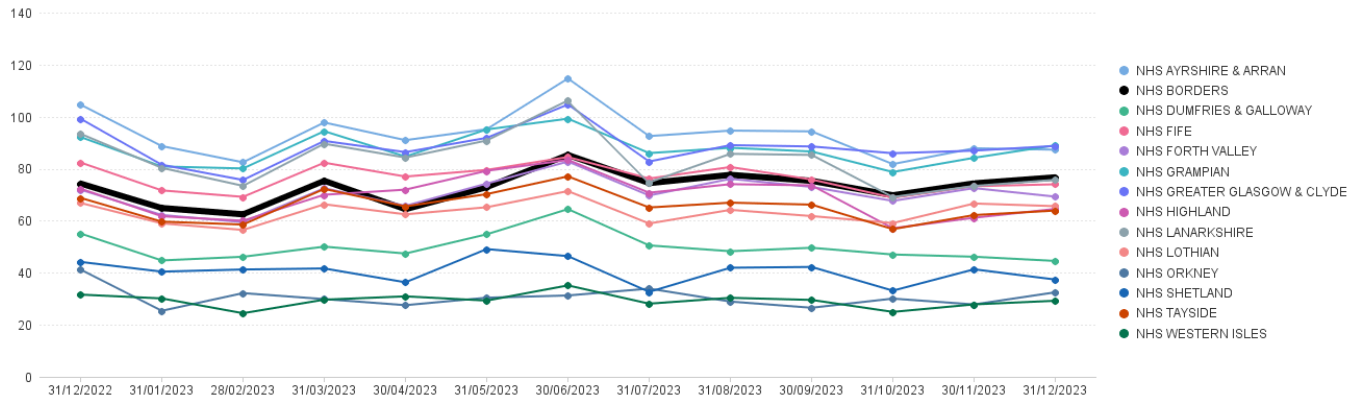


All UCF Claims - Items per '000 List Size by Board, up to December 2023

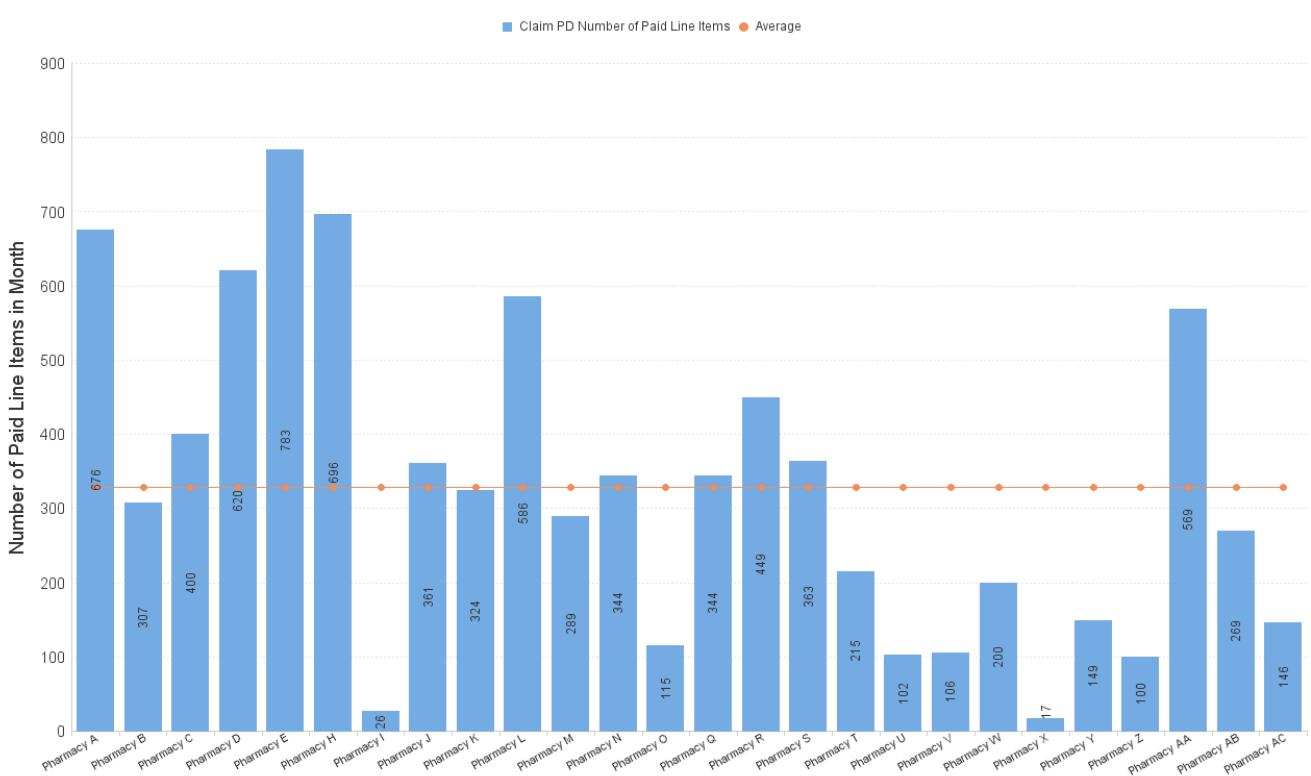
All Items claimed on UCF forms, including all Pharmacy First sub-services, CPUS, EHC, GFF, HSV, MVP and NRT.

Items per '000 LS by Paid Date and Presc Health Board Name



	Dec 22	Jan 23	Feb 23	Mar 23	Apr 23	May 23	Jun 23	Jul 23	Aug 23	Sep 23	Oct 23	Nov 23	Dec 23
NHS AYRSHIRE & ARRAN	104.63	88.70	82.48	97.77	90.98	95.19	114.68	92.54	94.65	94.36	81.78	87.86	87.32
NHS BORDERS	74.30	64.89	62.48	75.36	64.43	72.90	85.30	74.48	77.64	75.35	69.79	74.36	76.68
NHS DUMFRIES & GALLOWAY	55.10	44.75	46.16	50.05	47.41	54.79	64.48	50.53	48.29	49.62	47.03	46.17	44.56
NHS FIFE	82.38	71.67	69.19	82.32	76.99	79.55	84.50	76.24	80.65	75.85	68.87	73.27	74.01
NHS FORTH VALLEY	71.95	62.23	59.47	72.51	65.74	74.30	82.76	69.72	76.11	73.00	67.64	72.54	69.28
NHS GRAMPIAN	92.18	80.87	80.11	94.43	84.69	95.10	99.24	86.01	88.05	86.62	78.73	84.20	89.00
NHS GREATER GLASGOW & CLYDE	99.21	81.52	75.68	90.68	86.38	91.87	104.69	82.78	89.06	88.56	85.96	86.95	88.77
NHS HIGHLAND	72.34	61.74	60.03	70.00	71.97	79.20	83.38	70.79	74.06	73.60	57.13	61.17	64.55
NHS LANARKSHIRE	93.42	80.33	73.42	89.61	84.29	90.85	106.23	74.78	85.73	85.30	69.13	73.37	75.74
NHS LOTHIAN	66.84	58.99	56.48	66.33	62.47	65.19	71.41	58.95	64.19	61.80	59.11	66.63	65.61
NHS ORKNEY	41.25	25.40	32.19	29.89	27.55	30.43	31.28	33.92	28.94	26.56	30.08	27.84	32.50
NHS SHETLAND	44.19	40.45	41.27	41.67	36.34	49.11	46.41	32.67	41.95	42.25	33.14	41.34	37.41
NHS TAYSIDE	68.79	59.66	58.55	72.23	65.52	70.25	77.06	65.11	66.95	66.20	56.79	62.20	63.91
NHS WESTERN ISLES	31.62	30.15	24.47	29.67	30.95	29.32	35.16	28.13	30.38	29.57	24.97	27.85	29.25

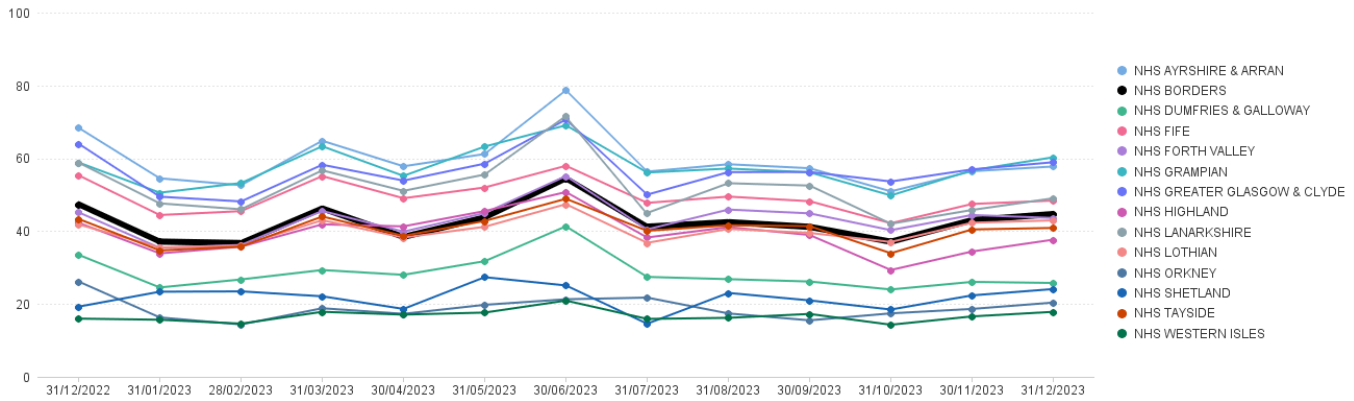
NHS Borders: Number of Paid Line Items in Month (Dec 2023)



Pharmacy First Items per '000 List Size by Board

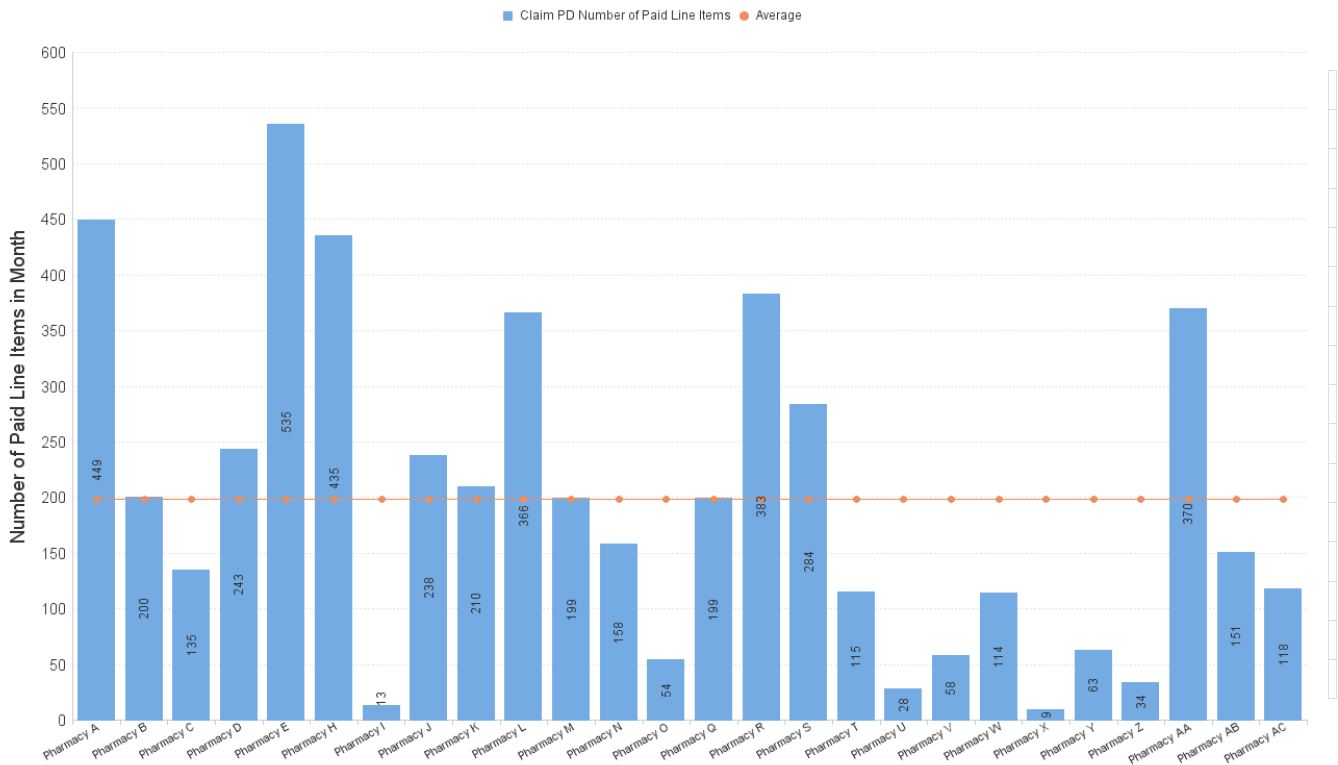
Pharmacy First includes sub-services flags M (Minor Ailments), UTI/G/R (UTI where an item has been dispensed), IPT/G/R (Impetigo where an item has been dispensed)

Items per '000 LS by Paid Date and Presc Health Board Name



	Dec 22	Jan 23	Feb 23	Mar 23	Apr 23	May 23	Jun 23	Jul 23	Aug 23	Sep 23	Oct 23	Nov 23	Dec 23
NHS AYRSHIRE & ARRAN	68.38	54.51	52.62	64.82	57.81	61.19	78.69	56.36	58.37	57.28	50.92	56.47	57.75
NHS BORDERS	47.39	37.13	36.74	46.26	38.43	43.77	54.49	41.23	42.47	41.19	37.11	43.05	44.70
NHS DUMFRIES & GALLOWAY	33.52	24.55	26.75	29.33	28.01	31.76	41.32	27.44	26.82	26.18	23.99	26.08	25.78
NHS FIFE	55.34	44.43	45.50	55.12	49.04	51.99	57.94	47.77	49.49	48.23	42.18	47.47	48.40
NHS FORTH VALLEY	45.18	35.42	36.21	45.57	39.88	44.99	55.12	40.50	45.93	44.89	40.27	44.44	43.62
NHS GRAMPIAN	58.87	50.56	53.22	63.31	55.17	63.23	69.07	56.10	57.20	56.16	49.81	56.71	60.28
NHS GREATER GLASGOW & CLYDE	64.02	49.47	48.16	58.23	53.89	58.54	70.65	50.03	56.21	56.25	53.64	56.96	58.93
NHS HIGHLAND	42.32	33.89	35.74	41.87	41.31	45.52	50.74	38.26	41.12	38.95	29.34	34.42	37.67
NHS LANARKSHIRE	58.82	47.63	46.00	56.70	51.07	55.55	71.61	45.00	53.16	52.52	42.04	45.82	49.03
NHS Lothian	41.87	35.52	36.04	43.01	38.24	41.20	47.42	36.81	40.61	39.52	37.04	42.32	42.96
NHS ORKNEY	26.18	16.32	14.39	18.84	17.30	19.78	21.30	21.76	17.41	15.53	17.44	18.65	20.40
NHS SHETLAND	19.27	23.38	23.47	22.12	18.65	27.37	25.10	14.59	23.04	20.99	18.49	22.37	24.11
NHS TAYSIDE	43.35	34.71	35.77	44.02	38.71	42.81	48.89	40.10	41.64	41.38	33.95	40.47	40.89
NHS WESTERN ISLES	15.99	15.68	14.61	17.86	17.10	17.65	20.94	15.91	16.21	17.28	14.31	16.60	17.85

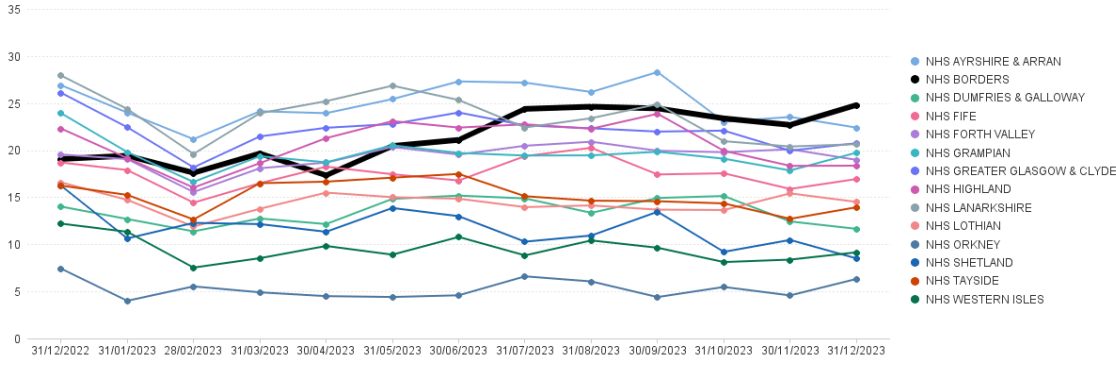
NHS Borders: Number of Paid Line Items in Month (Dec 2023)



Community Pharmacy Urgent Supply (CPUS) Items per '000 List Size by Board

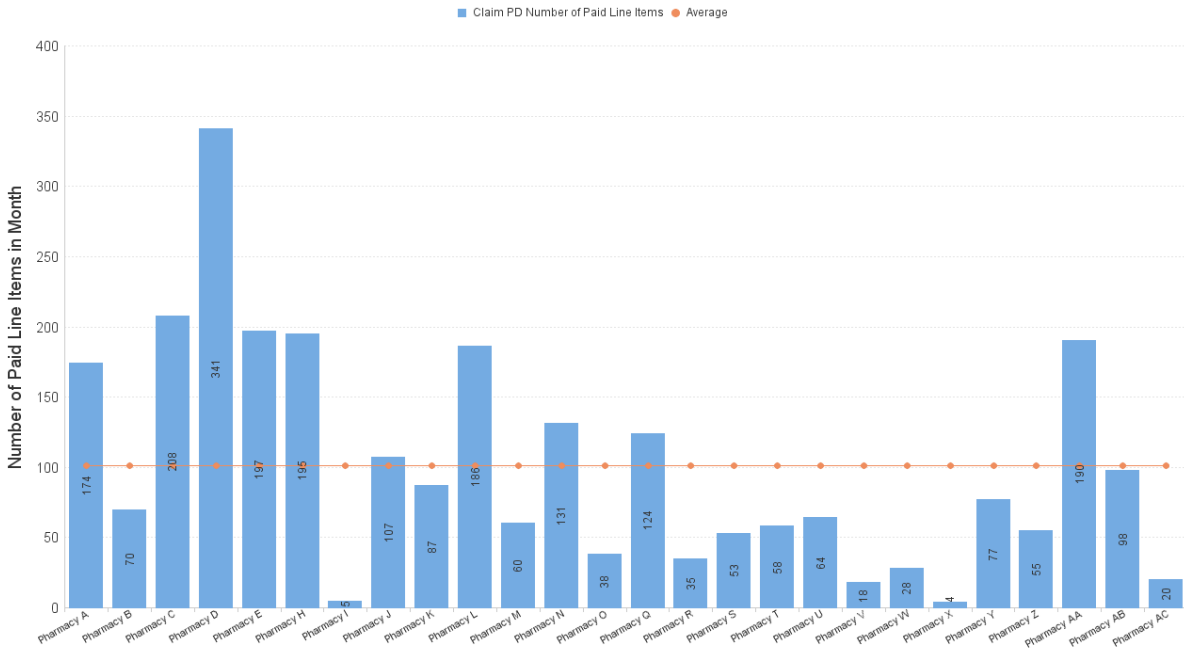
Items dispensed under sub-service flag CPUS

Items per '000 LS by Paid Date and Presc Health Board Name



	Dec 22	Jan 23	Feb 23	Mar 23	Apr 23	May 23	Jun 23	Jul 23	Aug 23	Sep 23	Oct 23	Nov 23	Dec 23
NHS AYRSHIRE & ARRAN	26.90	23.99	21.17	24.13	23.93	25.42	27.30	27.17	26.18	28.30	23.01	23.53	22.40
NHS BORDERS	19.06	19.41	17.59	19.65	17.33	20.44	21.09	24.38	24.62	24.43	23.37	22.68	24.80
NHS DUMFRIES & GALLOWAY	14.01	12.68	11.38	12.74	12.15	14.82	15.17	14.88	13.34	14.92	15.13	12.43	11.64
NHS FIFE	18.69	17.89	14.42	16.49	18.25	17.44	16.78	19.37	20.25	17.42	17.54	15.88	16.93
NHS FORTH VALLEY	19.54	19.05	15.55	18.08	18.68	20.33	19.53	20.47	20.89	19.94	19.78	20.10	18.97
NHS GRAMPIAN	23.93	19.80	16.63	19.36	18.71	20.52	19.70	19.43	19.45	19.83	19.09	17.84	19.73
NHS GREATER GLASGOW & CLYDE	26.11	22.43	18.17	21.46	22.38	22.78	24.00	22.63	22.32	21.97	22.07	19.95	20.74
NHS HIGHLAND	22.30	19.15	16.03	18.62	21.28	23.09	22.40	22.75	22.27	23.87	19.93	18.34	18.35
NHS LANARKSHIRE	27.93	24.38	19.60	23.92	25.20	26.85	25.33	22.41	23.40	24.89	20.96	20.39	20.64
NHS LOTHIAN	16.58	14.72	11.89	13.77	15.49	15.00	14.84	13.95	14.13	13.68	13.64	15.41	14.51
NHS ORKNEY	7.42	4.00	5.53	4.90	4.49	4.40	4.58	6.60	6.06	4.40	5.47	4.57	6.32
NHS SHETLAND	16.23	10.62	12.28	12.15	11.33	13.86	12.99	10.28	10.93	13.46	9.20	10.46	8.50
NHS TAYSIDE	16.24	15.25	12.64	16.49	16.65	17.08	17.48	15.10	14.64	14.58	14.35	12.71	13.93
NHS WESTERN ISLES	12.20	11.33	7.53	8.52	9.82	8.90	10.78	8.82	10.41	9.64	8.12	8.37	9.15

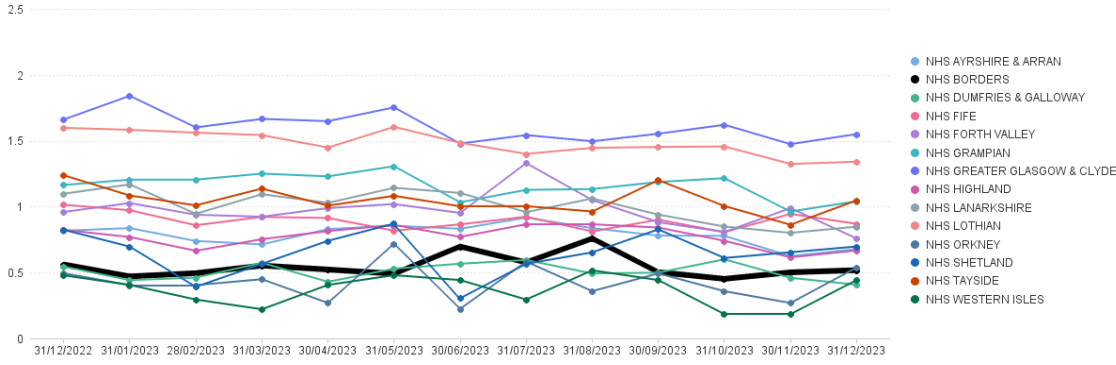
NHS Borders: Number of Paid Line Items in Month (Dec 2023)



Emergency Hormonal Contraception Items per '000 List Size by Board

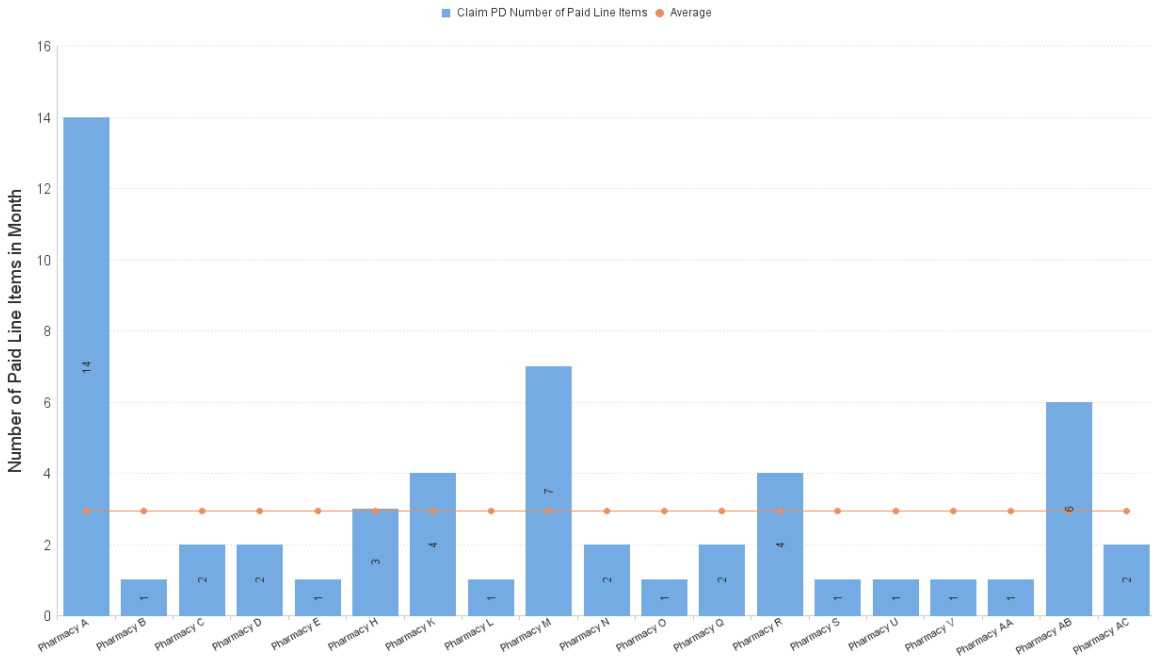
Items dispensed under sub-service flag EHC

Items per '000 LS by Paid Date and Presc Health Board Name



	Dec 22	Jan 23	Feb 23	Mar 23	Apr 23	May 23	Jun 23	Jul 23	Aug 23	Sep 23	Oct 23	Nov 23	Dec 23
NHS AYRSHIRE & ARRAN	0.82	0.84	0.74	0.71	0.83	0.86	0.83	0.92	0.84	0.78	0.78	0.62	0.68
NHS BORDERS	0.56	0.47	0.50	0.55	0.52	0.49	0.70	0.58	0.76	0.50	0.45	0.50	0.52
NHS DUMFRIES & GALLOWAY	0.55	0.44	0.46	0.57	0.43	0.53	0.57	0.60	0.49	0.50	0.60	0.46	0.41
NHS FIFE	1.01	0.97	0.86	0.92	0.91	0.82	0.87	0.92	0.81	0.90	0.81	0.95	0.87
NHS FORTH VALLEY	0.96	1.03	0.94	0.92	0.99	1.02	0.95	1.33	1.05	0.88	0.81	0.99	0.76
NHS GRAMPPIAN	1.16	1.20	1.20	1.25	1.23	1.31	1.03	1.13	1.13	1.19	1.22	0.96	1.04
NHS GREATER GLASGOW & CLYDE	1.66	1.84	1.60	1.67	1.65	1.75	1.48	1.54	1.50	1.55	1.62	1.47	1.55
NHS HIGHLAND	0.82	0.77	0.67	0.75	0.81	0.86	0.77	0.87	0.87	0.84	0.74	0.62	0.67
NHS LANARKSHIRE	1.10	1.17	0.95	1.09	1.03	1.14	1.10	0.96	1.06	0.94	0.85	0.80	0.85
NHS LOTHIAN	1.60	1.58	1.56	1.54	1.45	1.61	1.48	1.40	1.45	1.45	1.46	1.32	1.34
NHS ORKNEY	0.49	0.40	0.40	0.45	0.27	0.72	0.22	0.58	0.36	0.49	0.36	0.27	0.54
NHS SHETLAND	0.82	0.70	0.39	0.57	0.74	0.87	0.31	0.57	0.65	0.83	0.61	0.65	0.70
NHS TAYSIDE	1.24	1.08	1.01	1.14	1.01	1.08	1.00	1.00	0.96	1.20	1.00	0.86	1.05
NHS WESTERN ISLES	0.48	0.41	0.30	0.22	0.41	0.48	0.44	0.30	0.52	0.44	0.18	0.18	0.44

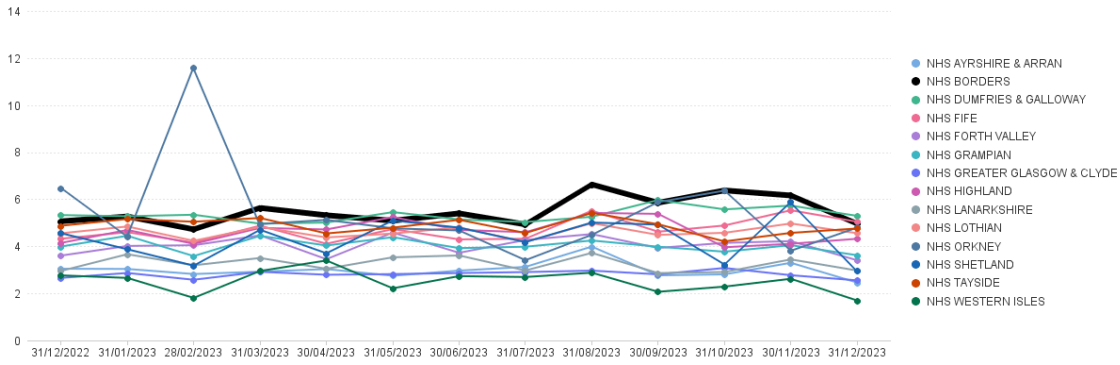
NHS Borders: Number of Paid Line Items in Month (Dec 2023)



Gluten Free Food Items per '000 List Size by Board

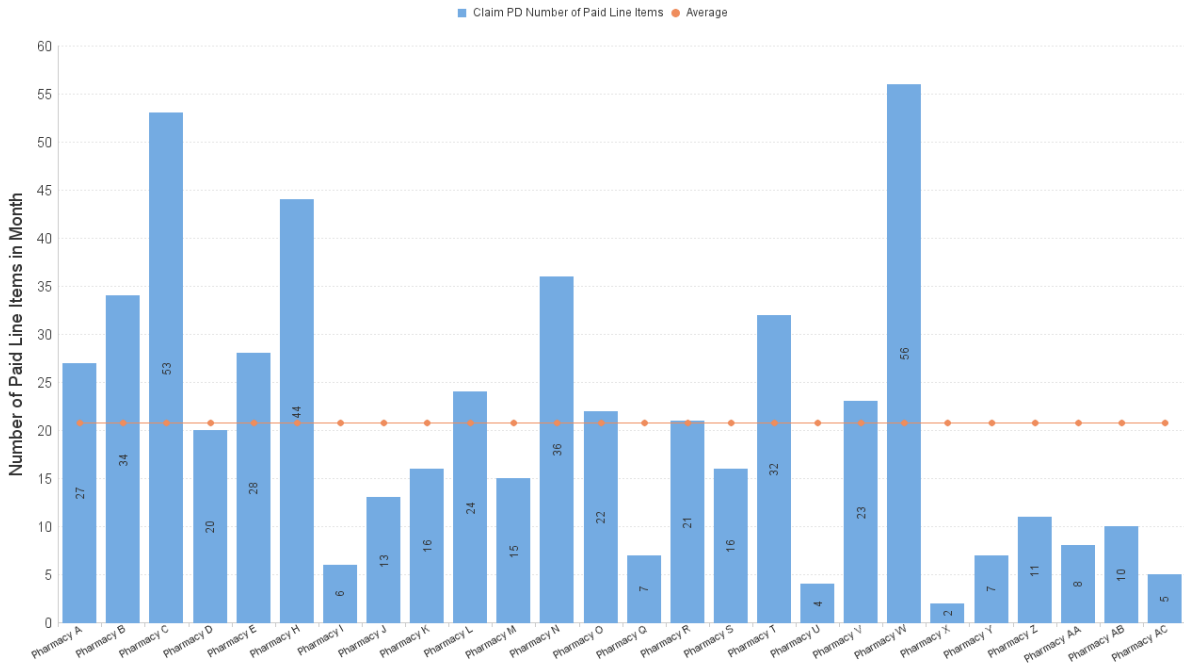
Items dispensed under sub-service flag GFF

Items per '000 LS by Paid Date and Presc Health Board Name



	Dec 22	Jan 23	Feb 23	Mar 23	Apr 23	May 23	Jun 23	Jul 23	Aug 23	Sep 23	Oct 23	Nov 23	Dec 23
NHS AYRSHIRE & ARRAN	3.05	3.04	2.82	2.92	3.03	2.75	2.97	3.13	3.99	2.77	2.81	3.30	2.46
NHS BORDERS	5.06	5.27	4.72	5.63	5.32	5.09	5.40	4.93	6.63	5.85	6.37	6.16	4.96
NHS DUMFRIES & GALLOWAY	5.33	5.28	5.34	4.96	5.01	5.45	5.14	5.03	5.26	5.97	5.57	5.73	5.29
NHS FIFE	4.32	4.60	4.16	4.88	4.11	4.73	4.29	4.32	5.51	4.62	4.88	5.53	5.04
NHS FORTH VALLEY	3.61	4.02	4.05	4.46	3.45	4.59	3.72	4.27	4.52	3.93	4.15	4.22	3.41
NHS GRAMPIAN	3.99	4.45	3.58	4.44	4.03	4.39	3.92	3.98	4.25	3.98	3.77	4.05	3.62
NHS GREATER GLASGOW & CLYDE	2.66	2.87	2.58	2.92	2.79	2.82	2.86	2.91	2.97	2.81	3.08	2.77	2.55
NHS HIGHLAND	4.14	4.69	4.10	4.78	4.72	5.24	4.70	4.60	5.42	5.38	3.96	4.11	4.32
NHS LANARKSHIRE	2.96	3.66	3.19	3.50	3.04	3.53	3.61	2.97	3.72	2.86	2.91	3.44	2.97
NHS Lothian	4.55	4.84	4.23	4.83	4.38	4.54	4.80	4.18	4.98	4.48	4.57	4.97	4.56
NHS ORKNEY	6.48	4.41	11.60	4.94	5.12	4.76	4.67	3.41	4.49	5.88	6.37	3.81	4.80
NHS SHETLAND	4.56	3.87	3.18	4.70	3.70	5.10	4.79	4.18	5.01	4.92	3.23	5.89	2.97
NHS TAYSIDE	4.87	5.16	5.04	5.20	4.55	4.79	5.13	4.57	5.42	4.94	4.21	4.57	4.76
NHS WESTERN ISLES	2.76	2.66	1.81	2.95	3.40	2.22	2.73	2.70	2.88	2.07	2.29	2.62	1.70

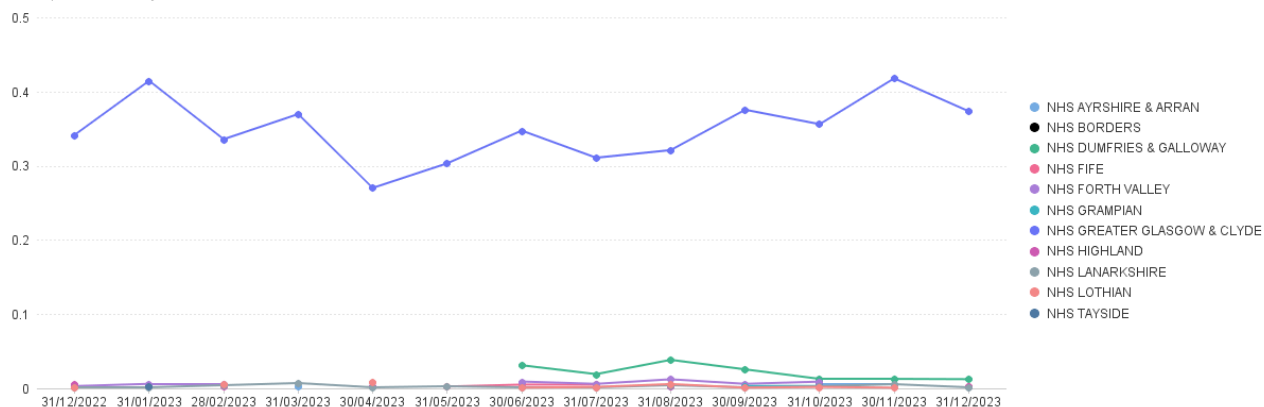
NHS Borders: Number of Paid Line Items in Month (Dec 2023)



Healthy Start Vitamins Items per '000 List Size by Board

Items dispensed under sub-service flag HSV

Items per '000 LS by Paid Date and Presc Health Board Name



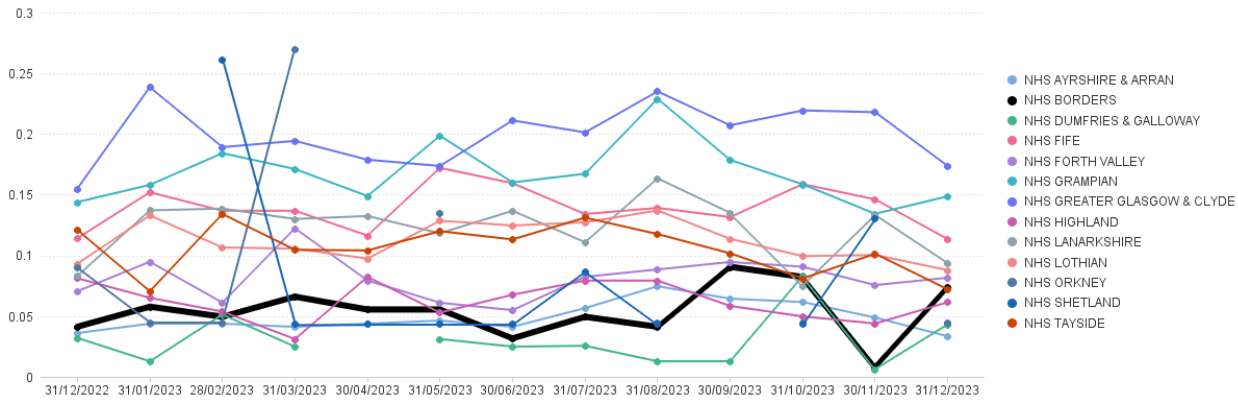
	Dec 22	Jan 23	Feb 23	Mar 23	Apr 23	May 23	Jun 23	Jul 23	Aug 23	Sep 23	Oct 23	Nov 23	Dec 23
NHS Ayrshire & Arran				0.00					0.00		0.01	0.01	
NHS Borders											0.01		
NHS Dumfries & Galloway							0.03	0.02	0.04	0.03	0.01	0.01	0.01
NHS Fife						0.00	0.01	0.01		0.00			0.00
NHS Forth Valley	0.00	0.01	0.01		0.00		0.01	0.01	0.01	0.01	0.01		
NHS Grampian										0.00	0.00		
NHS Greater Glasgow & Clyde	0.34	0.41	0.34	0.37	0.27	0.30	0.35	0.31	0.32	0.38	0.36	0.42	0.37
NHS Highland	0.01		0.00		0.00				0.00		0.00		0.00
NHS Lanarkshire	0.00	0.00	0.00	0.01	0.00	0.00	0.00	0.00	0.00	0.00	0.00	0.01	0.00
NHS Lothian	0.00		0.01		0.01		0.00	0.00	0.01	0.00	0.00	0.00	
NHS Tayside		0.00											

No Community Pharmacy graph included as number so low.

MenB Paracetamol Items per '000 List Size by Board

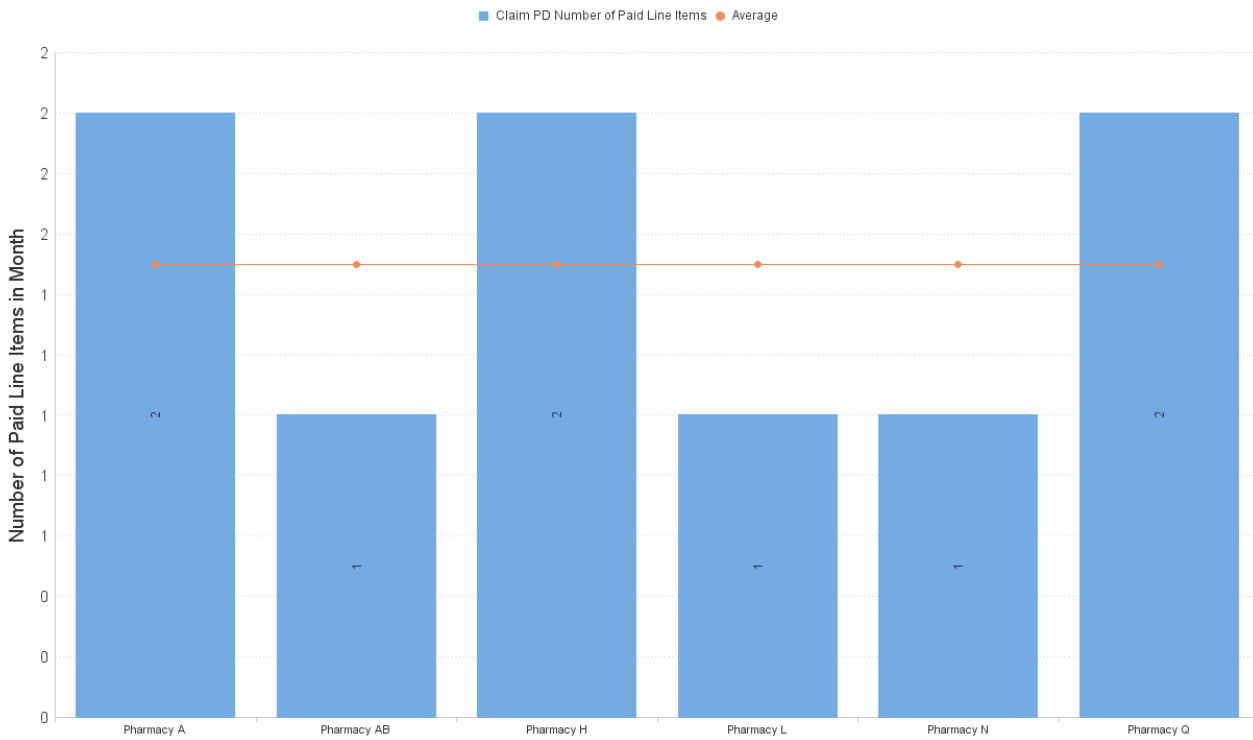
Items dispensed under sub-service flag MVP

Items per '000 LS by Paid Date and Presc Health Board Name



	Dec 22	Jan 23	Feb 23	Mar 23	Apr 23	May 23	Jun 23	Jul 23	Aug 23	Sep 23	Oct 23	Nov 23	Dec 23
NHS Ayrshire & Arran	0.04	0.04	0.04	0.04	0.04	0.05	0.04	0.06	0.07	0.06	0.06	0.05	0.03
NHS Borders	0.04	0.06	0.05	0.07	0.06	0.06	0.03	0.05	0.04	0.09	0.08	0.01	0.07
NHS Dumfries & Galloway	0.03	0.01	0.05	0.02		0.03	0.02	0.03	0.01	0.01	0.08	0.01	0.04
NHS Fife	0.11	0.15	0.14	0.14	0.12	0.17	0.16	0.13	0.14	0.13	0.16	0.15	0.11
NHS Forth Valley	0.07	0.09	0.06	0.12	0.08	0.06	0.05	0.08	0.09	0.09	0.09	0.08	0.08
NHS Grampian	0.14	0.16	0.18	0.17	0.15	0.20	0.16	0.17	0.23	0.18	0.16	0.13	0.15
NHS Greater Glasgow & Clyde	0.15	0.24	0.19	0.19	0.18	0.17	0.21	0.20	0.24	0.21	0.22	0.22	0.17
NHS Highland	0.08	0.07	0.05	0.03	0.08	0.05	0.07	0.08	0.08	0.06	0.05	0.04	0.06
NHS Lanarkshire	0.08	0.14	0.14	0.13	0.13	0.12	0.14	0.11	0.16	0.14	0.08	0.13	0.09
NHS Lothian	0.09	0.13	0.11	0.11	0.10	0.13	0.12	0.13	0.14	0.11	0.10	0.10	0.09
NHS Orkney	0.09	0.04	0.04	0.27		0.13		0.04	0.04		0.04		0.04
NHS Shetland			0.26	0.04	0.04	0.04	0.04	0.09	0.04		0.04	0.13	
NHS Tayside	0.12	0.07	0.13	0.10	0.10	0.12	0.11	0.13	0.12	0.10	0.08	0.10	0.07

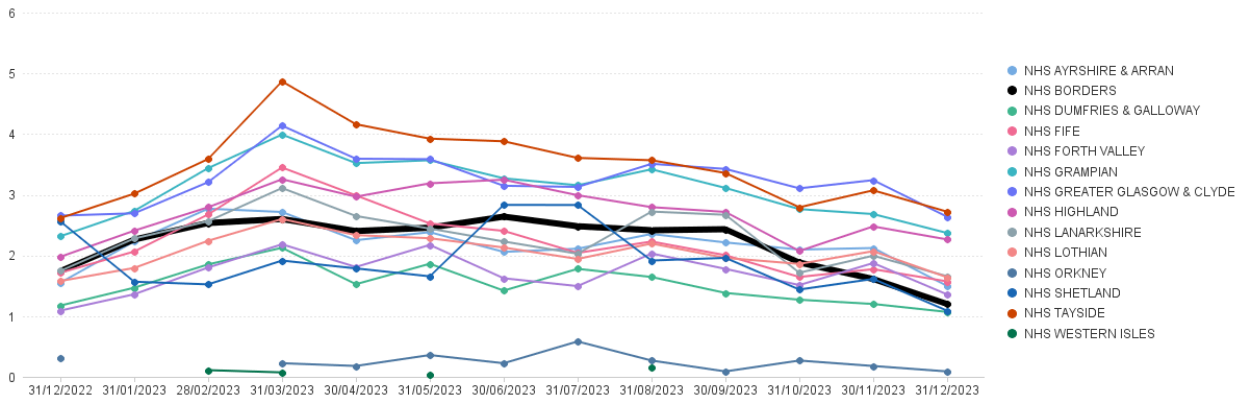
NHS Borders: Number of Paid Line Items in Month (Dec 2023)



Nicotine Replacement Therapy Items per '000 List Size by Board

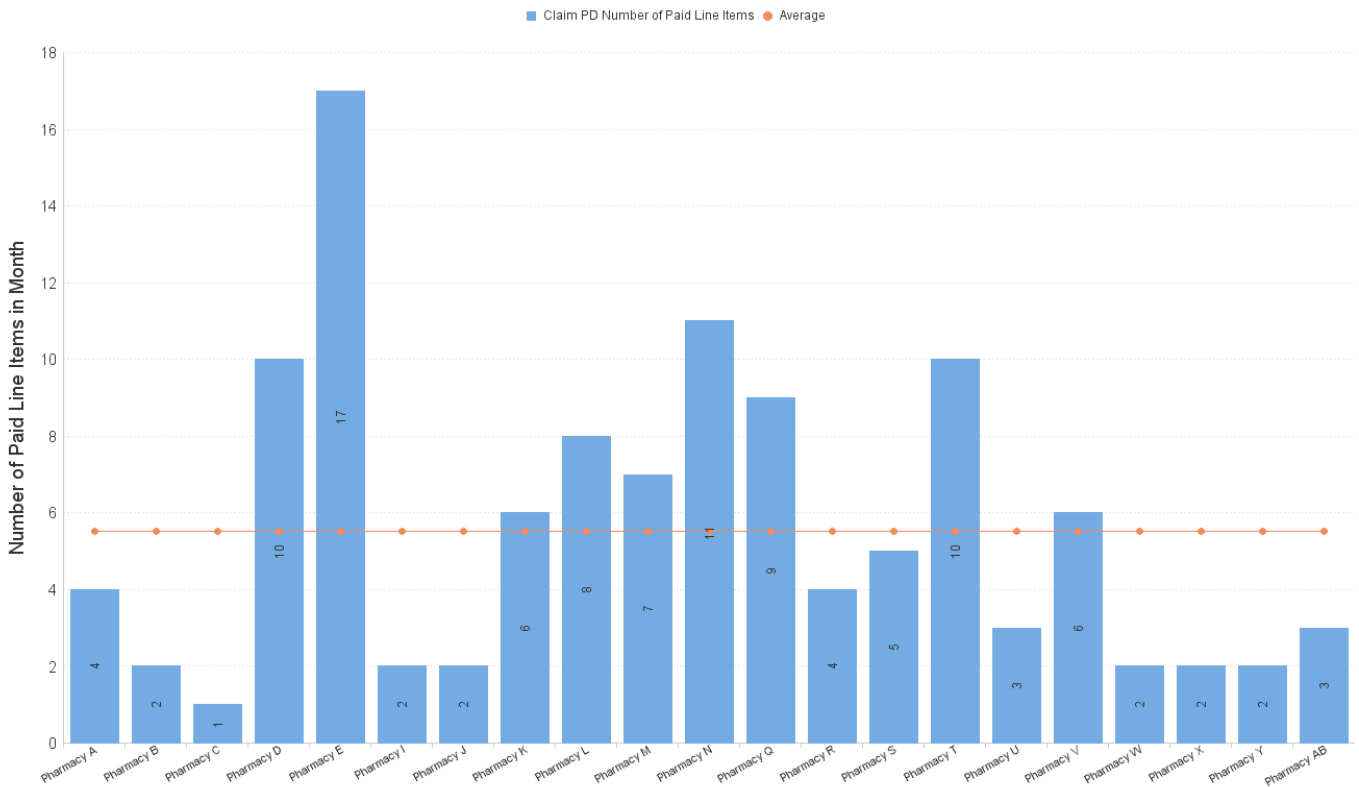
Items dispensed under sub-service flag NRT

Items per '000 LS by Paid Date and Presc Health Board Name



	Dec 22	Jan 23	Feb 23	Mar 23	Apr 23	May 23	Jun 23	Jul 23	Aug 23	Sep 23	Oct 23	Nov 23	Dec 23
NHS AYRSHIRE & ARRAN	1.55	2.23	2.77	2.72	2.25	2.38	2.06	2.11	2.35	2.21	2.10	2.12	1.50
NHS BORDERS	1.74	2.26	2.53	2.60	2.40	2.46	2.64	2.48	2.42	2.43	1.88	1.61	1.20
NHS DUMFRIES & GALLOWAY	1.17	1.47	1.85	2.13	1.53	1.86	1.42	1.78	1.65	1.38	1.27	1.20	1.07
NHS FIFE	1.72	2.07	2.68	3.45	2.99	2.53	2.40	2.04	2.23	2.00	1.65	1.77	1.57
NHS FORTH VALLEY	1.09	1.36	1.80	2.18	1.81	2.17	1.62	1.50	2.03	1.78	1.51	1.88	1.36
NHS GRAMPIAN	2.32	2.73	3.44	3.99	3.52	3.57	3.27	3.16	3.42	3.11	2.76	2.68	2.37
NHS GREATER GLASGOW & CLYDE	2.66	2.69	3.21	4.14	3.59	3.59	3.15	3.13	3.51	3.43	3.11	3.24	2.64
NHS HIGHLAND	1.98	2.41	2.79	3.26	2.97	3.19	3.25	2.99	2.80	2.72	2.07	2.48	2.26
NHS LANARKSHIRE	1.75	2.28	2.56	3.11	2.65	2.44	2.23	2.03	2.72	2.67	1.72	2.00	1.66
NHS Lothian	1.58	1.79	2.24	2.60	2.33	2.28	2.13	1.94	2.20	1.96	1.86	2.07	1.64
NHS ORKNEY	0.31			0.22	0.18	0.36	0.22	0.58	0.27	0.09	0.27	0.18	0.09
NHS SHETLAND	2.56	1.57	1.52	1.92	1.79	1.66	2.83	2.83	1.92	1.96	1.44	1.61	1.09
NHS TAYSIDE	2.62	3.02	3.59	4.87	4.16	3.92	3.88	3.61	3.57	3.36	2.79	3.07	2.72
NHS WESTERN ISLES			0.11	0.07		0.04			0.15				

NHS Borders: Number of Paid Line Items in Month (Dec 2023)



NHS Borders - All UCF claims by Pharmacy, Dec 2023

		Other Service	Other Service	Other Service	Other Service	Other Service	Other Service	Other Service	Other Service	Other Service	Pharmacy First Service	Pharmacy First Service	Pharmacy First Service	Pharmacy First Service	Pharmacy First Service	
		CPUS	EBC	EHC	GFF	HFG	MVP	NRT	SHG	SIG	IPG	IPR	M	UTG	UTR	
Pharmacy B	31/12/2023	174	1	14	27		2	4		5	2	1	432	14		
Pharmacy C	31/12/2023	70		1	34			2			2		189	9		
Pharmacy D	31/12/2023	208		2	53			1		1	2		124	9		
Pharmacy E	31/12/2023	341		2	20			10	3	1	2		230	11		
Pharmacy F	31/12/2023	197	4	1	28			17	1		1		519	15		
Pharmacy I	31/12/2023	195		3	44		2			2	15	14	397	24		
Pharmacy J	31/12/2023	5			6			2					12	1		
Pharmacy K	31/12/2023	107			13			2	1		2		230	6		
Pharmacy L	31/12/2023	87		4	16			6	1				202	8		
Pharmacy M	31/12/2023	186		1	24		1	8					363	3		
Pharmacy N	31/12/2023	60		7	15	1		7					193	6		
Pharmacy O	31/12/2023	131	1	2	36		1	11	1	3			146	12		
Pharmacy P	31/12/2023	38		1	22								54			
Pharmacy R	31/12/2023	124		2	7		2	9	1		2		190	7		
Pharmacy S	31/12/2023	35	1	4	21			4		1	1		379	3		
Pharmacy T	31/12/2023	53		1	16			5	1	3	2		274	8		
Pharmacy U	31/12/2023	58			32			10					108	6	1	
Pharmacy V	31/12/2023	64		1	4			3		2			22	6		
Pharmacy W	31/12/2023	18		1	23			6			1		54	3		
Pharmacy X	31/12/2023	28			56			2					104	10		
Pharmacy Y	31/12/2023	4			2			2					9			
Pharmacy Z	31/12/2023	77			7			2					63			
Pharmacy AA	31/12/2023	55			11								31	3		
Pharmacy AB	31/12/2023	190		1	8						1		367	2		
Pharmacy AC	31/12/2023	98		6	10		1	3			1		144	6		
Pharmacy A	31/12/2023	20		2	5					1			117	1		