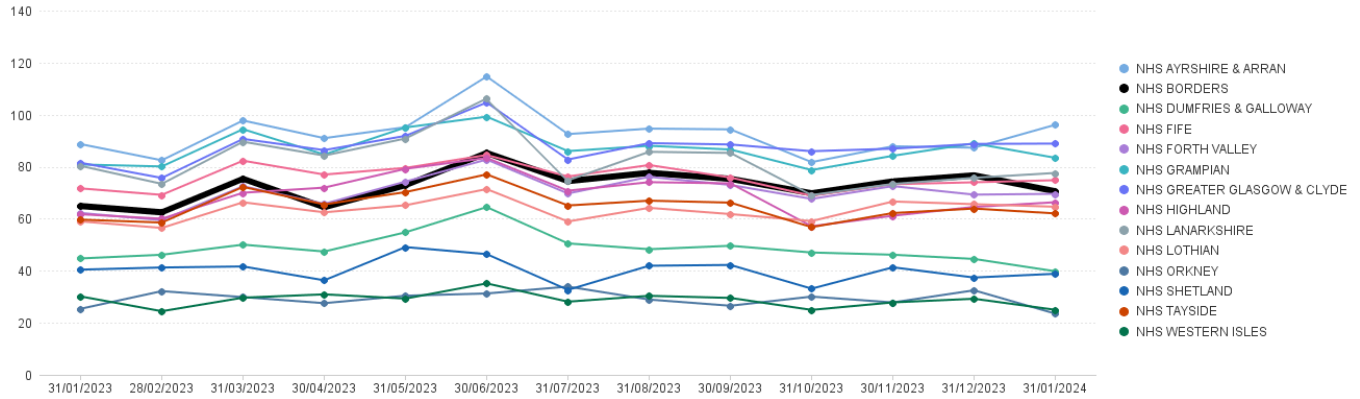


All UCF Claims - Items per '000 List Size by Board, up to January 2024

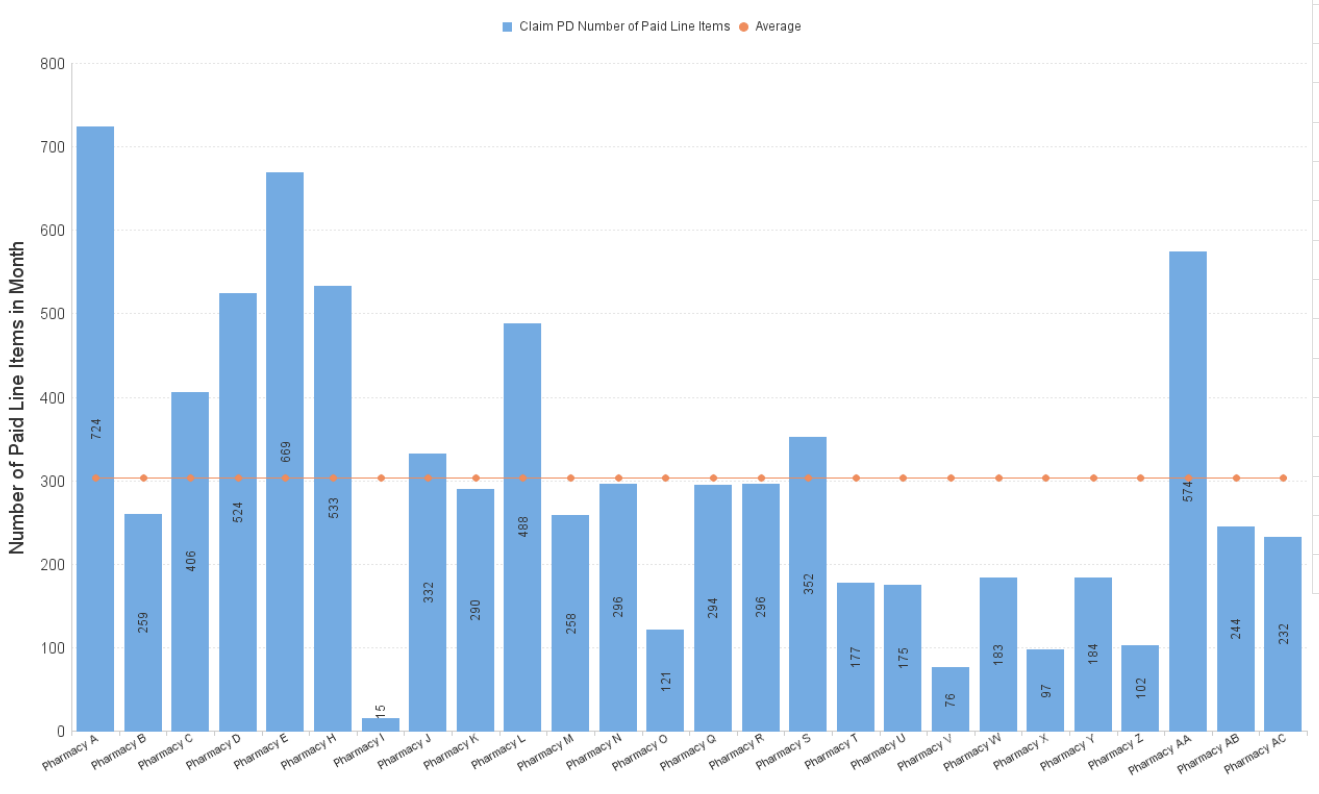
All items claimed on UCF forms, including all Pharmacy First sub-services, CPUS, EHC, GFF, HSV, MVP and NRT.

Items per '000 LS by Paid Date and Presc Health Board Name



	Jan 23	Feb 23	Mar 23	Apr 23	May 23	Jun 23	Jul 23	Aug 23	Sep 23	Oct 23	Nov 23	Dec 23	Jan 24
NHS AYRSHIRE & ARRAN	88.70	82.48	97.77	90.98	95.19	114.68	92.54	94.65	94.36	81.78	87.86	87.32	96.12
NHS BORDERS	64.89	62.48	75.36	64.43	72.90	85.30	74.48	77.64	75.35	69.79	74.36	76.68	70.56
NHS DUMFRIES & GALLOWAY	44.75	46.16	50.05	47.41	54.79	64.48	50.53	48.29	49.62	47.03	46.17	44.56	39.82
NHS FIFE	71.67	69.19	82.32	76.99	79.55	84.50	76.24	80.65	75.85	68.87	73.27	74.01	74.82
NHS FORTH VALLEY	62.23	59.47	72.51	65.74	74.30	82.76	69.72	76.11	73.00	67.64	72.54	69.28	69.59
NHS GRAMPIAN	80.87	80.11	94.43	84.69	95.10	99.24	86.01	88.05	86.62	78.73	84.20	89.00	83.42
NHS GREATER GLASGOW & CLYDE	81.52	75.68	90.68	86.38	91.87	104.69	82.78	89.06	88.56	85.96	86.95	88.77	88.89
NHS HIGHLAND	61.74	60.03	70.00	71.97	79.20	83.38	70.79	74.06	73.60	57.13	61.17	64.55	66.35
NHS LANARKSHIRE	80.33	73.42	89.61	84.29	90.85	106.23	74.78	85.73	85.30	69.13	73.37	75.74	77.60
NHS LOTHIAN	58.99	56.48	66.33	62.47	65.19	71.41	58.95	64.19	61.80	59.11	66.63	65.61	64.61
NHS ORKNEY	25.40	32.19	29.89	27.55	30.43	31.28	33.92	28.94	26.56	30.08	27.84	32.50	23.53
NHS SHETLAND	40.45	41.27	41.67	36.34	49.11	46.41	32.67	41.95	42.25	33.14	41.34	37.41	38.85
NHS TAYSIDE	59.66	58.55	72.23	65.52	70.25	77.06	65.11	66.95	66.20	56.79	62.20	63.91	62.06
NHS WESTERN ISLES	30.15	24.47	29.67	30.95	29.32	35.16	28.13	30.38	29.57	24.97	27.85	29.25	25.01

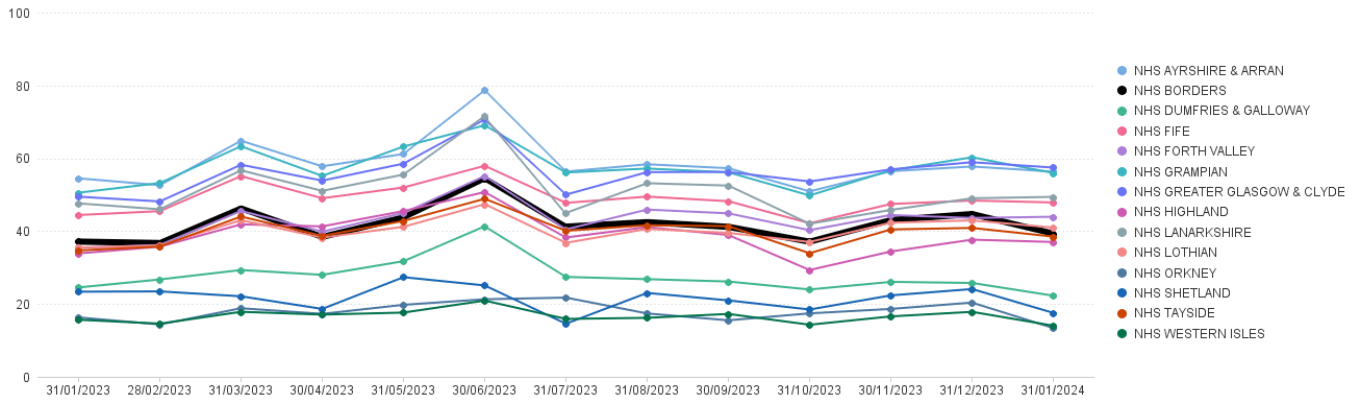
NHS Borders: Number of Paid Line Items in Month (Jan 2024)



Pharmacy First Items per '000 List Size by Board

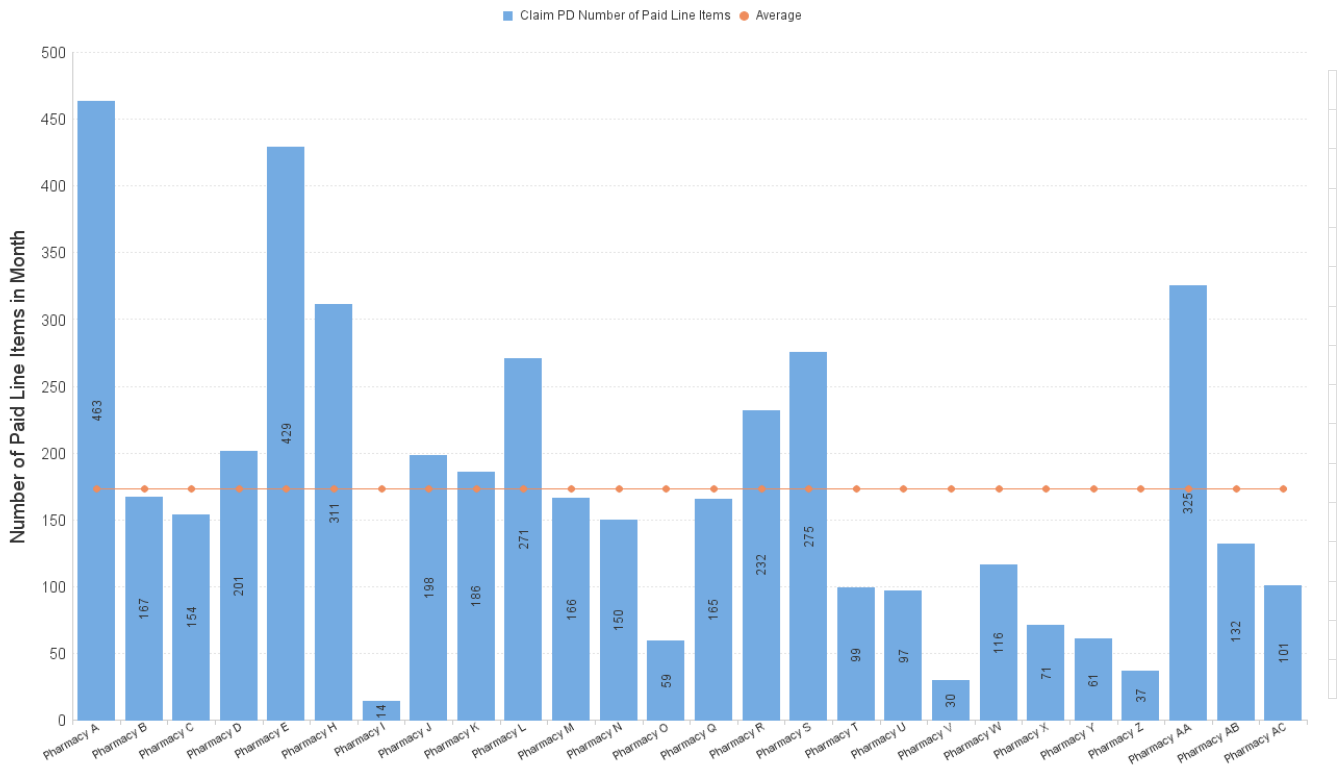
Pharmacy First includes sub-services flags M (Minor Ailments), UTI/G/R (UTI where an item has been dispensed), IPT/G/R (Impetigo where an item has been dispensed)

Items per '000 LS by Paid Date and Presc Health Board Name



	Jan 23	Feb 23	Mar 23	Apr 23	May 23	Jun 23	Jul 23	Aug 23	Sep 23	Oct 23	Nov 23	Dec 23	Jan 24
NHS Ayrshire & Arran	54.51	52.62	64.82	57.81	61.19	78.89	56.36	58.37	57.28	50.92	56.47	57.75	56.34
NHS Borders	37.13	36.74	46.26	38.43	43.77	54.49	41.23	42.47	41.19	37.11	43.05	44.70	39.34
NHS Dumfries & Galloway	24.55	26.75	29.33	28.01	31.76	41.32	27.44	26.82	26.18	23.99	26.08	25.78	22.29
NHS Fife	44.43	45.50	55.12	49.04	51.99	57.94	47.77	49.49	48.23	42.18	47.47	48.40	47.88
NHS Forth Valley	35.42	36.21	45.57	39.88	44.99	55.12	40.50	45.93	44.89	40.27	44.44	43.62	43.96
NHS Grampian	50.56	53.22	63.31	55.17	63.23	69.07	56.10	57.20	56.16	49.81	56.71	60.28	55.97
NHS Greater Glasgow & Clyde	49.47	48.16	58.23	53.89	58.54	70.65	50.03	56.21	56.25	53.64	56.96	58.93	57.46
NHS Highland	33.89	35.74	41.87	41.31	45.52	50.74	38.26	41.12	38.95	29.34	34.42	37.67	37.03
NHS Lanarkshire	47.63	46.00	56.70	51.07	55.55	71.61	45.00	53.16	52.52	42.04	45.82	49.03	49.42
NHS Lothian	35.52	36.04	43.01	38.24	41.20	47.42	36.81	40.61	39.52	37.04	42.32	42.96	40.98
NHS Orkney	16.32	14.39	18.84	17.30	19.78	21.30	21.76	17.41	15.53	17.44	18.65	20.40	13.40
NHS Shetland	23.38	23.47	22.12	18.65	27.37	25.10	14.59	23.04	20.99	18.49	22.37	24.11	17.57
NHS Tayside	34.71	35.77	44.02	38.71	42.81	48.89	40.10	41.64	41.38	33.95	40.47	40.89	38.51
NHS Western Isles	15.68	14.61	17.86	17.10	17.65	20.94	15.91	16.21	17.28	14.31	16.60	17.85	14.05

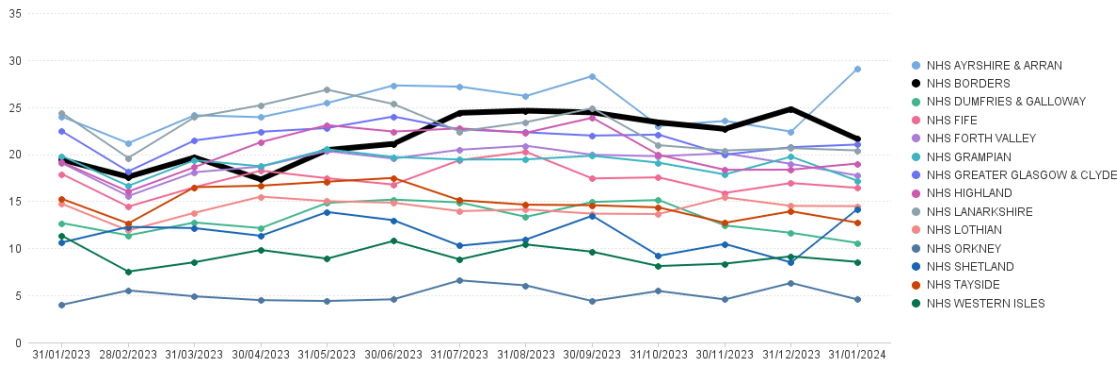
NHS Borders: Number of Paid Line Items in Month (Jan 2024)



Community Pharmacy Urgent Supply (CPUS) Items per '000 List Size by Board

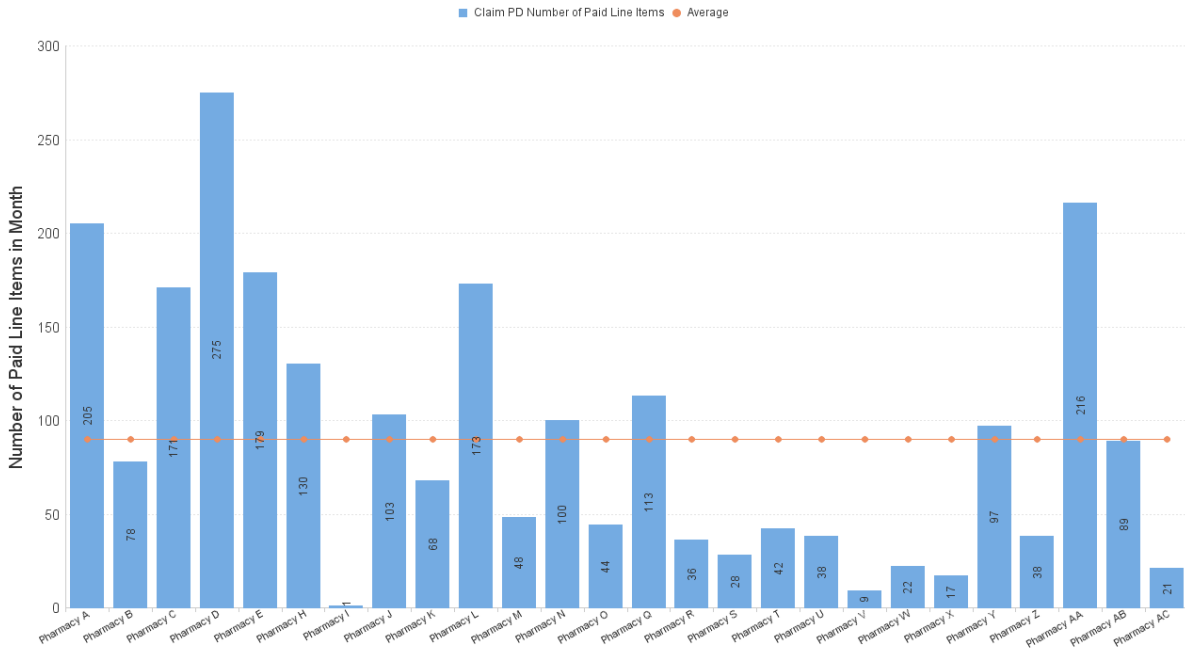
Items dispensed under sub-service flag CPUS

Items per '000 LS by Paid Date and Presc Health Board Name



	Jan 23	Feb 23	Mar 23	Apr 23	May 23	Jun 23	Jul 23	Aug 23	Sep 23	Oct 23	Nov 23	Dec 23	Jan 24
NHS AYRSHIRE & ARRAN	23.99	21.17	24.13	23.93	25.42	27.30	27.17	26.18	28.30	23.01	23.53	22.40	29.08
NHS BORDERS	19.41	17.59	19.65	17.33	20.44	21.09	24.38	24.62	24.43	23.37	22.68	24.80	21.61
NHS DUMFRIES & GALLOWAY	12.68	11.38	12.74	12.15	14.82	15.17	14.88	13.34	14.92	15.13	12.43	11.64	10.57
NHS FIFE	17.89	14.42	16.49	18.25	17.44	16.78	19.37	20.25	17.42	17.54	15.88	16.93	16.42
NHS FORTH VALLEY	19.05	15.55	18.08	18.68	20.33	19.53	20.47	20.89	19.94	19.78	20.10	18.97	17.73
NHS GRAMPIAN	19.80	16.63	19.36	18.71	20.52	19.70	19.43	19.45	19.83	19.09	17.84	19.73	17.18
NHS GREATER GLASGOW & CLYDE	22.43	18.17	21.46	22.38	22.78	24.00	22.63	22.32	21.97	22.07	19.95	20.74	21.03
NHS HIGHLAND	19.15	16.03	18.62	21.28	23.09	22.40	22.75	22.27	23.87	19.93	18.34	18.35	19.00
NHS LANARKSHIRE	24.38	19.60	23.92	25.20	26.85	25.33	22.41	23.40	24.89	20.96	20.39	20.64	20.40
NHS LOTHIAN	14.72	11.89	13.77	15.49	15.00	14.84	13.95	14.13	13.68	13.64	15.41	14.51	14.48
NHS ORKNEY	4.00	5.53	4.90	4.49	4.40	4.58	6.60	6.06	4.40	5.47	4.57	6.32	4.57
NHS SHETLAND	10.62	12.28	12.15	11.33	13.86	12.99	10.28	10.93	13.46	9.20	10.46	8.50	14.17
NHS TAYSIDE	15.25	12.64	16.49	16.65	17.08	17.48	15.10	14.64	14.58	14.35	12.71	13.93	12.73
NHS WESTERN ISLES	11.33	7.53	8.52	9.82	8.90	10.78	8.82	10.41	9.64	8.12	8.37	9.15	8.56

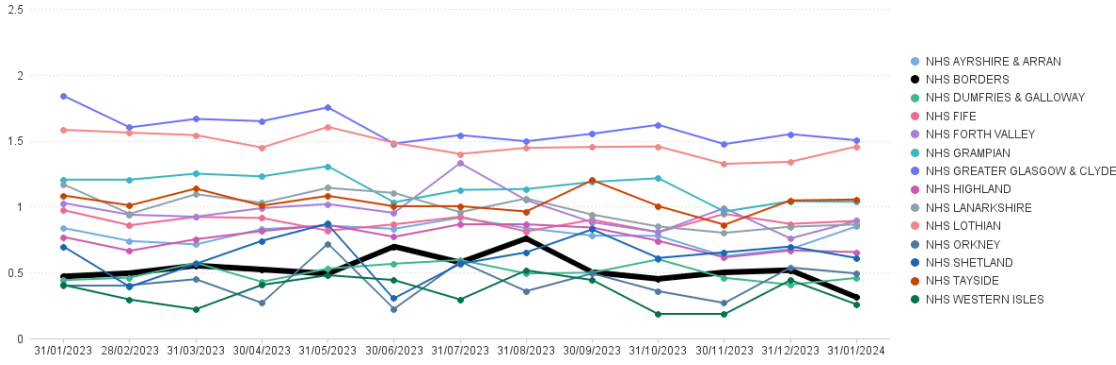
NHS Borders: Number of Paid Line Items in Month (Jan 2024)



Emergency Hormonal Contraception Items per '000 List Size by Board

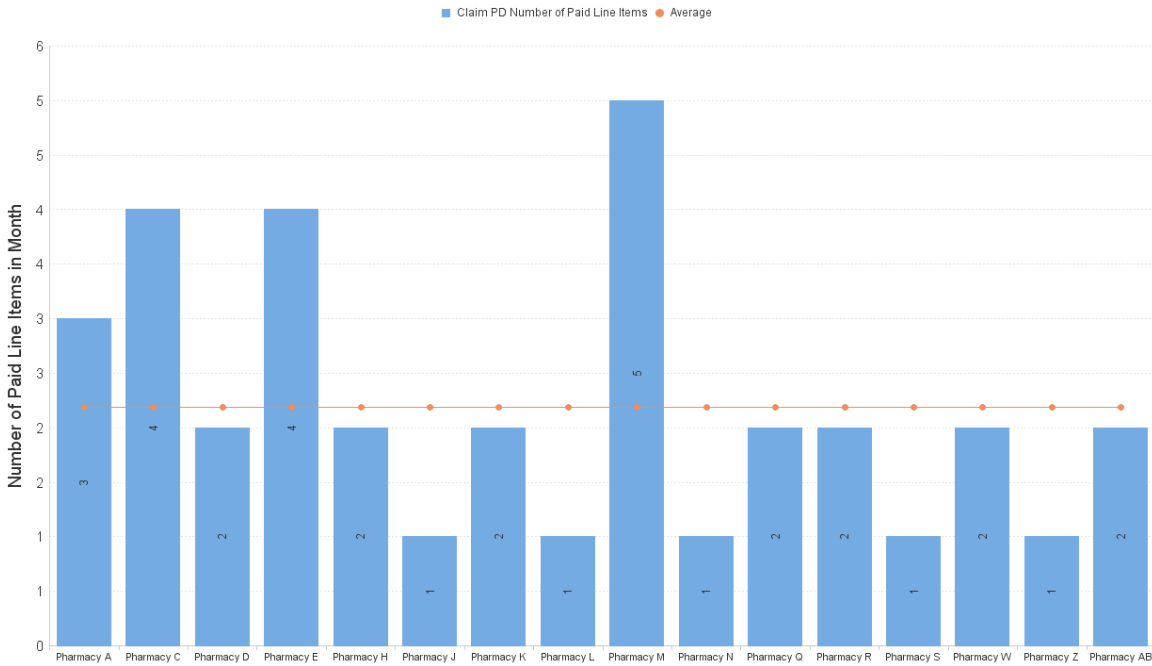
Items dispensed under sub-service flag EHC

Items per '000 LS by Paid Date and Presc Health Board Name



	Jan 23	Feb 23	Mar 23	Apr 23	May 23	Jun 23	Jul 23	Aug 23	Sep 23	Oct 23	Nov 23	Dec 23	Jan 24
NHS AYRSHIRE & ARRAN	0.84	0.74	0.71	0.83	0.86	0.83	0.92	0.84	0.78	0.78	0.62	0.68	0.85
NHS BORDERS	0.47	0.50	0.55	0.52	0.49	0.70	0.58	0.76	0.50	0.45	0.50	0.52	0.31
NHS DUMFRIES & GALLOWAY	0.44	0.46	0.57	0.43	0.53	0.57	0.60	0.49	0.50	0.60	0.46	0.41	0.46
NHS FIFE	0.97	0.86	0.92	0.91	0.82	0.87	0.92	0.81	0.90	0.81	0.95	0.87	0.89
NHS FORTH VALLEY	1.03	0.94	0.92	0.99	1.02	0.95	1.33	1.05	0.88	0.81	0.99	0.76	0.89
NHS GRAMPIAN	1.20	1.20	1.25	1.23	1.31	1.03	1.13	1.13	1.19	1.22	0.96	1.04	1.04
NHS GREATER GLASGOW & CLYDE	1.84	1.60	1.67	1.65	1.75	1.48	1.54	1.50	1.55	1.62	1.47	1.55	1.50
NHS HIGHLAND	0.77	0.67	0.75	0.81	0.86	0.77	0.87	0.87	0.84	0.74	0.62	0.67	0.66
NHS LANARKSHIRE	1.17	0.95	1.09	1.03	1.14	1.10	0.96	1.06	0.94	0.85	0.80	0.85	0.86
NHS LOTHIAN	1.58	1.56	1.54	1.45	1.61	1.48	1.40	1.45	1.45	1.46	1.32	1.34	1.46
NHS ORKNEY	0.40	0.40	0.45	0.27	0.72	0.22	0.58	0.36	0.49	0.36	0.27	0.54	0.49
NHS SHETLAND	0.70	0.39	0.57	0.74	0.87	0.31	0.57	0.65	0.83	0.61	0.65	0.70	0.61
NHS TAYSIDE	1.08	1.01	1.14	1.01	1.08	1.00	1.00	0.96	1.20	1.00	0.86	1.05	1.05
NHS WESTERN ISLES	0.41	0.30	0.22	0.41	0.48	0.44	0.30	0.52	0.44	0.18	0.18	0.44	0.26

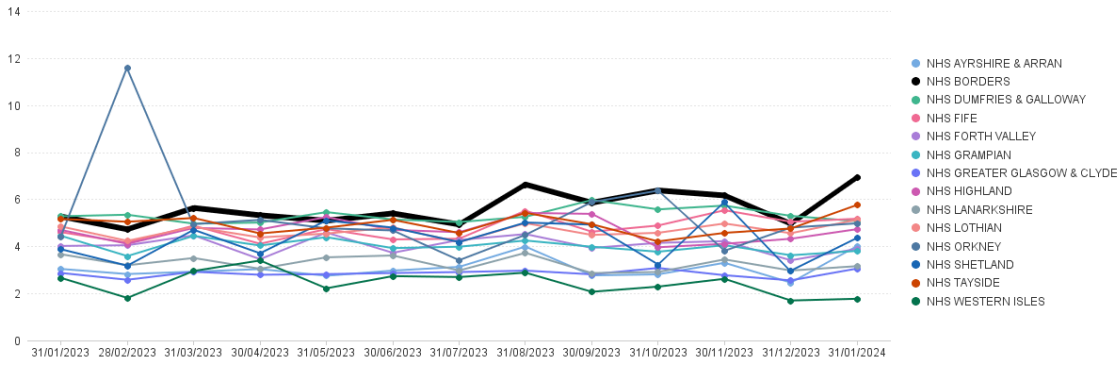
NHS Borders: Number of Paid Line Items in Month (Jan 2024)



Gluten Free Food Items per '000 List Size by Board

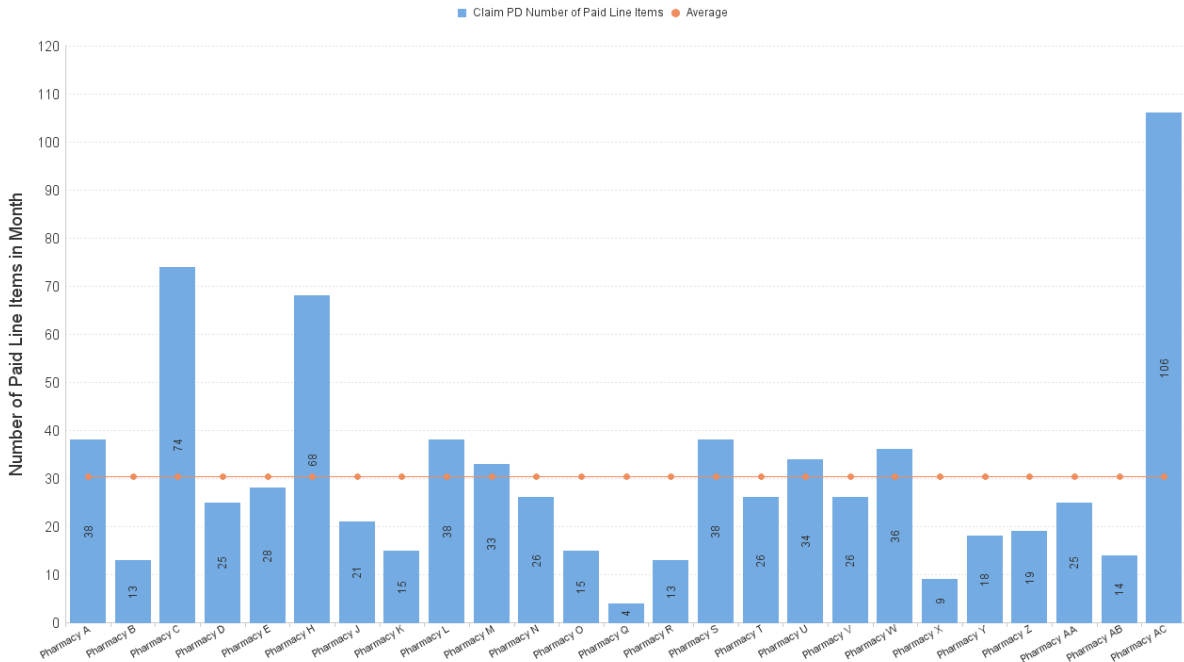
Items dispensed under sub-service flag GFF

Items per '000 LS by Paid Date and Presc Health Board Name



	Jan 23	Feb 23	Mar 23	Apr 23	May 23	Jun 23	Jul 23	Aug 23	Sep 23	Oct 23	Nov 23	Dec 23	Jan 24
NHS AYRSHIRE & ARRAN	3.04	2.82	2.92	3.03	2.75	2.97	3.13	3.99	2.77	2.81	3.30	2.46	4.01
NHS BORDERS	5.27	4.72	5.63	5.32	5.09	5.40	4.93	6.63	5.85	6.37	6.16	4.96	6.93
NHS DUMFRIES & GALLOWAY	5.28	5.34	4.96	5.01	5.45	5.14	5.03	5.26	5.97	5.57	5.73	5.29	5.07
NHS FIFE	4.60	4.16	4.88	4.11	4.73	4.29	4.32	5.51	4.62	4.88	5.53	5.04	5.17
NHS FORTH VALLEY	4.02	4.05	4.46	3.45	4.59	3.72	4.27	4.52	3.93	4.15	4.22	3.41	3.89
NHS GRAMPIAN	4.45	3.58	4.44	4.03	4.39	3.92	3.98	4.25	3.98	3.77	4.05	3.62	3.81
NHS GREATER GLASGOW & CLYDE	2.87	2.58	2.92	2.79	2.82	2.86	2.91	2.97	2.81	3.08	2.77	2.55	3.06
NHS HIGHLAND	4.69	4.10	4.78	4.72	5.24	4.70	4.60	5.42	5.38	3.96	4.11	4.32	4.73
NHS LANARKSHIRE	3.66	3.19	3.50	3.04	3.53	3.61	2.97	3.72	2.86	2.91	3.44	2.97	3.16
NHS Lothian	4.84	4.23	4.83	4.38	4.54	4.80	4.18	4.98	4.48	4.57	4.97	4.56	5.13
NHS ORKNEY	4.41	11.60	4.94	5.12	4.76	4.67	3.41	4.49	5.88	6.37	3.81	4.80	4.98
NHS SHETLAND	3.87	3.18	4.70	3.70	5.10	4.79	4.18	5.01	4.92	3.23	5.89	2.97	4.36
NHS TAYSIDE	5.16	5.04	5.20	4.55	4.79	5.13	4.57	5.42	4.94	4.21	4.57	4.76	5.76
NHS WESTERN ISLES	2.66	1.81	2.95	3.40	2.22	2.73	2.70	2.88	2.07	2.29	2.62	1.70	1.77

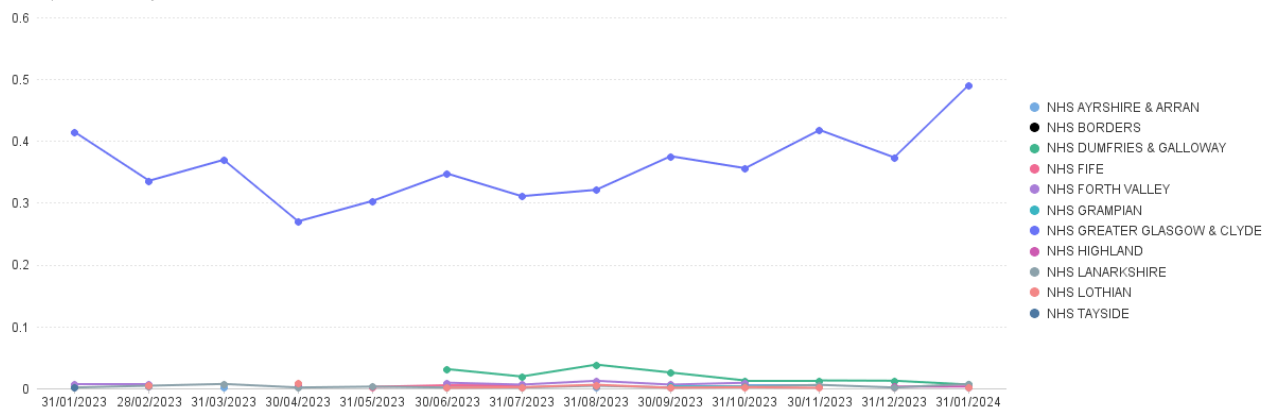
NHS Borders: Number of Paid Line Items in Month (Jan 2024)



Healthy Start Vitamins Items per '000 List Size by Board

Items dispensed under sub-service flag HSV

Items per '000 LS by Paid Date and Presc Health Board Name



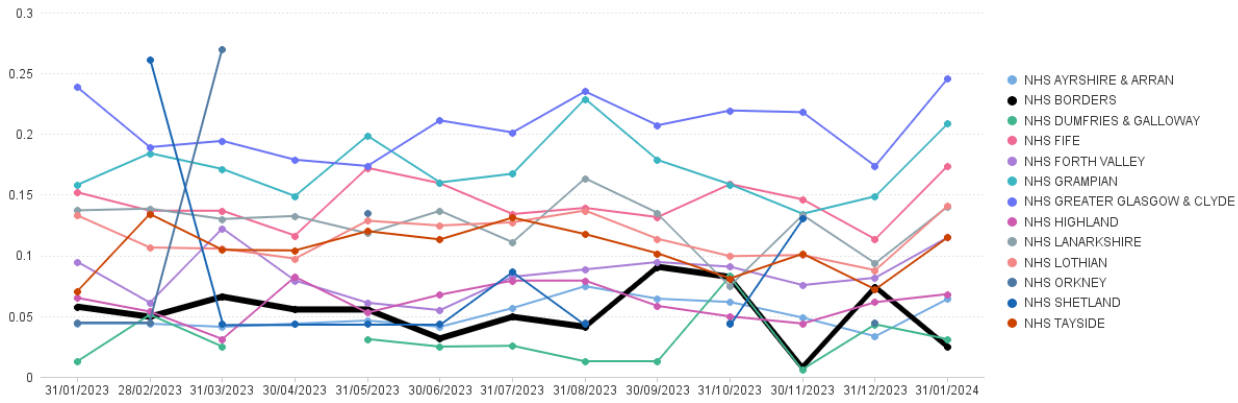
	Jan 23	Feb 23	Mar 23	Apr 23	May 23	Jun 23	Jul 23	Aug 23	Sep 23	Oct 23	Nov 23	Dec 23	Jan 24
NHS AYRSHIRE & ARRAN			0.00					0.00		0.01	0.01		0.00
NHS BORDERS										0.01			
NHS DUMFRIES & GALLOWAY						0.03	0.02	0.04	0.03	0.01	0.01	0.01	0.01
NHS FIFE					0.00	0.01	0.01		0.00			0.00	
NHS FORTH VALLEY	0.01	0.01		0.00		0.01	0.01	0.01	0.01	0.01			0.00
NHS GRAMPIAN									0.00	0.00			
NHS GREATER GLASGOW & CLYDE	0.41	0.34	0.37	0.27	0.30	0.35	0.31	0.32	0.38	0.36	0.42	0.37	0.49
NHS HIGHLAND		0.00		0.00				0.00		0.00		0.00	0.00
NHS LANARKSHIRE	0.00	0.00	0.01	0.00	0.00	0.00	0.00	0.00	0.00	0.00	0.01	0.00	0.01
NHS LOTHIAN		0.01		0.01		0.00	0.00	0.01	0.00	0.00	0.00		0.00
NHS TAYSIDE	0.00												

No Community Pharmacy graph included as number so low.

MenB Paracetamol Items per '000 List Size by Board

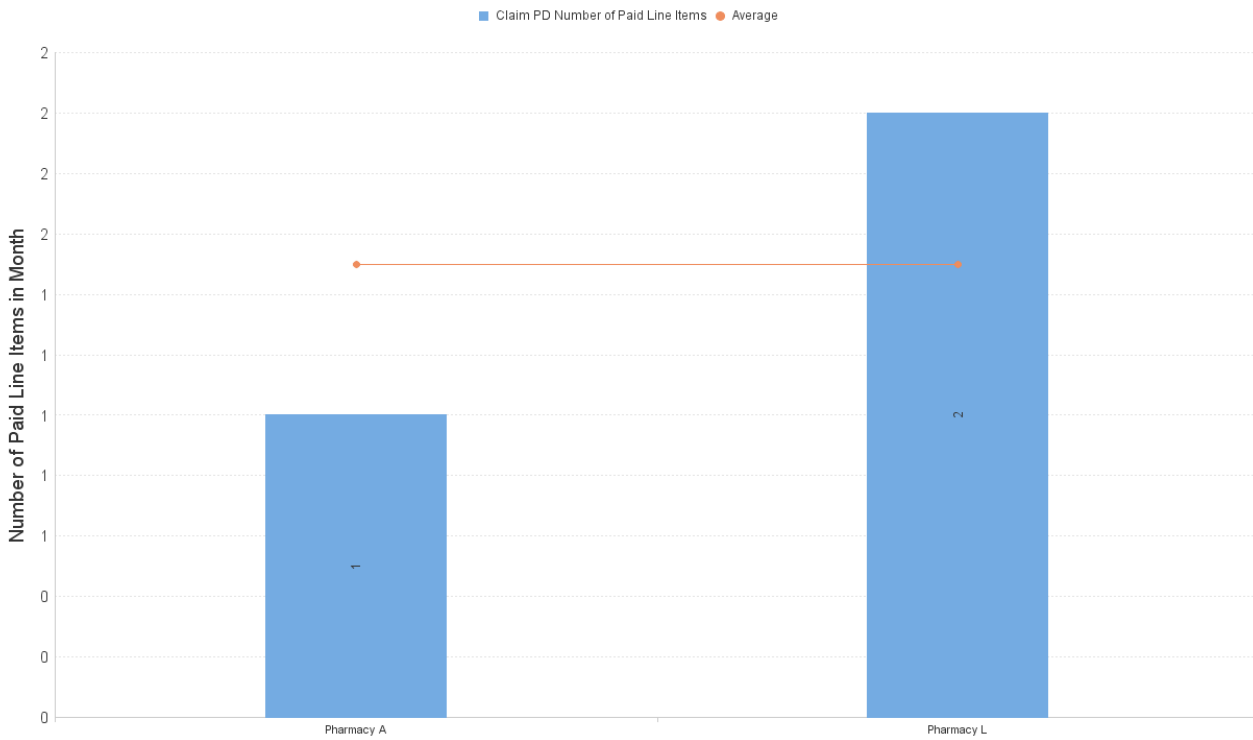
Items dispensed under sub-service flag MVP

Items per '000 LS by Paid Date and Presc Health Board Name



	Jan 23	Feb 23	Mar 23	Apr 23	May 23	Jun 23	Jul 23	Aug 23	Sep 23	Oct 23	Nov 23	Dec 23	Jan 24
NHS Ayrshire & Arran	0.04	0.04	0.04	0.04	0.05	0.04	0.06	0.07	0.06	0.06	0.05	0.03	0.06
NHS Borders	0.06	0.05	0.07	0.06	0.06	0.03	0.05	0.04	0.09	0.08	0.01	0.07	0.02
NHS Dumfries & Galloway	0.01	0.05	0.02		0.03	0.02	0.03	0.01	0.01	0.08	0.01	0.04	0.03
NHS Fife	0.15	0.14	0.14	0.12	0.17	0.16	0.13	0.14	0.13	0.16	0.15	0.11	0.17
NHS Forth Valley	0.09	0.06	0.12	0.08	0.06	0.05	0.08	0.09	0.09	0.09	0.08	0.08	0.11
NHS Grampian	0.16	0.18	0.17	0.15	0.20	0.16	0.17	0.23	0.18	0.16	0.13	0.15	0.21
NHS Greater Glasgow & Clyde	0.24	0.19	0.19	0.18	0.17	0.21	0.20	0.24	0.21	0.22	0.22	0.17	0.25
NHS Highland	0.07	0.05	0.03	0.08	0.05	0.07	0.08	0.08	0.06	0.05	0.04	0.06	0.07
NHS Lanarkshire	0.14	0.14	0.13	0.13	0.12	0.14	0.11	0.16	0.14	0.08	0.13	0.09	0.14
NHS Lothian	0.13	0.11	0.11	0.10	0.13	0.12	0.13	0.14	0.11	0.10	0.10	0.09	0.14
NHS Orkney	0.04	0.04	0.27		0.13			0.04		0.04		0.04	
NHS Shetland		0.26	0.04	0.04	0.04	0.04	0.09	0.04		0.04	0.13		
NHS Tayside	0.07	0.13	0.10	0.10	0.12	0.11	0.13	0.12	0.10	0.08	0.10	0.07	0.11

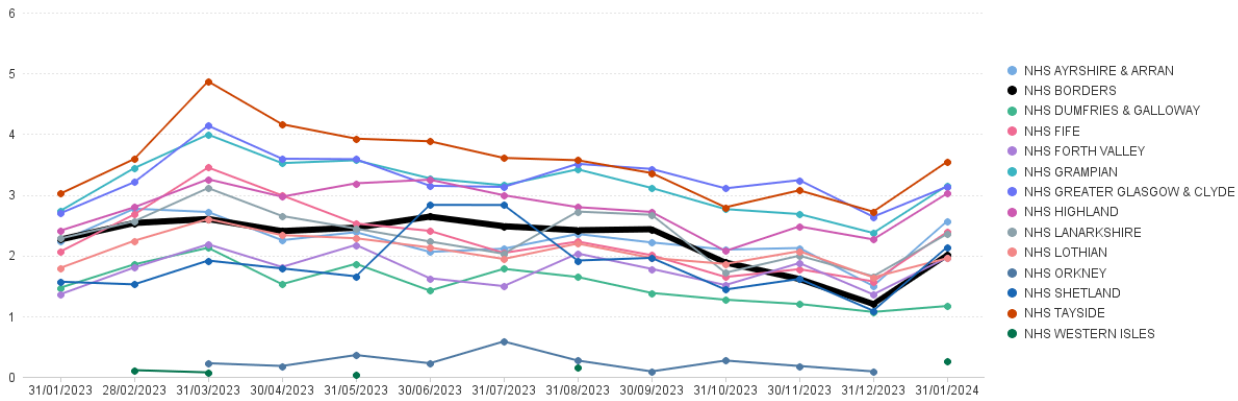
NHS Borders: Number of Paid Line Items in Month (Jan 2024)



Nicotine Replacement Therapy Items per '000 List Size by Board

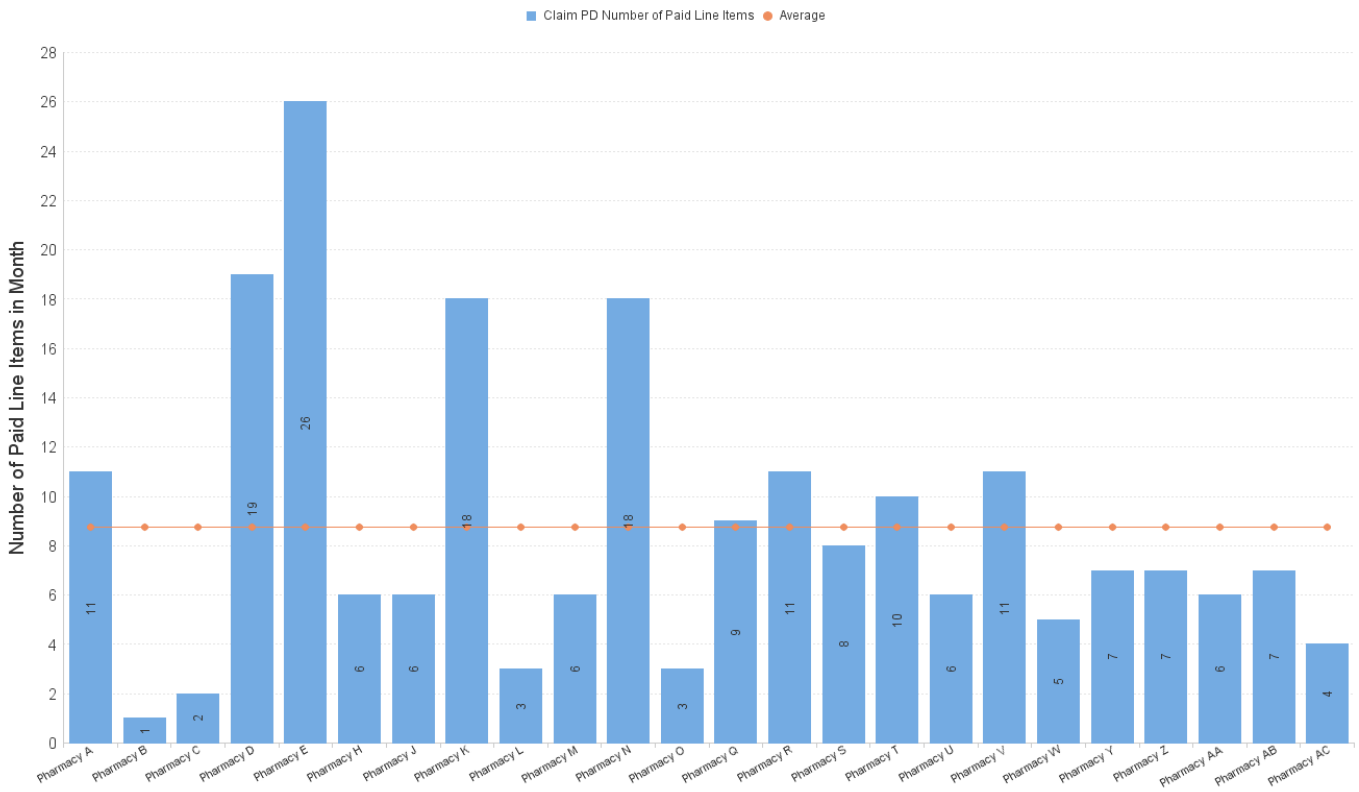
Items dispensed under sub-service flag NRT

Items per '000 LS by Paid Date and Presc Health Board Name



	Jan 23	Feb 23	Mar 23	Apr 23	May 23	Jun 23	Jul 23	Aug 23	Sep 23	Oct 23	Nov 23	Dec 23	Jan 24
NHS AYRSHIRE & ARRAN	2.23	2.77	2.72	2.25	2.38	2.06	2.11	2.35	2.21	2.10	2.12	1.50	2.56
NHS BORDERS	2.26	2.53	2.60	2.40	2.46	2.64	2.48	2.42	2.43	1.88	1.61	1.20	2.01
NHS DUMFRIES & GALLOWAY	1.47	1.85	2.13	1.53	1.86	1.42	1.78	1.65	1.38	1.27	1.20	1.07	1.17
NHS FIFE	2.07	2.68	3.45	2.99	2.53	2.40	2.04	2.23	2.00	1.65	1.77	1.57	2.39
NHS FORTH VALLEY	1.36	1.80	2.18	1.81	2.17	1.62	1.50	2.03	1.78	1.51	1.88	1.36	1.97
NHS GRAMPIAN	2.73	3.44	3.99	3.52	3.57	3.27	3.16	3.42	3.11	2.76	2.68	2.37	3.15
NHS GREATER GLASGOW & CLYDE	2.69	3.21	4.14	3.59	3.59	3.15	3.13	3.51	3.43	3.11	3.24	2.64	3.13
NHS HIGHLAND	2.41	2.79	3.26	2.97	3.19	3.25	2.99	2.80	2.72	2.07	2.48	2.26	3.02
NHS LANARKSHIRE	2.28	2.56	3.11	2.65	2.44	2.23	2.03	2.72	2.67	1.72	2.00	1.66	2.35
NHS LOTHIAN	1.79	2.24	2.60	2.33	2.28	2.13	1.94	2.20	1.96	1.86	2.07	1.64	1.95
NHS ORKNEY			0.22	0.18	0.36	0.22	0.58	0.27	0.09	0.27	0.18	0.09	
NHS SHETLAND	1.57	1.52	1.92	1.79	1.66	2.83	2.83	1.92	1.96	1.44	1.61	1.09	2.14
NHS TAYSIDE	3.02	3.59	4.87	4.16	3.92	3.88	3.61	3.57	3.36	2.79	3.07	2.72	3.54
NHS WESTERN ISLES		0.11	0.07		0.04			0.15					0.26

NHS Borders: Number of Paid Line Items in Month (Jan 2024)



NHS Borders - All UCF claims by Pharmacy, Jan 2024

		Other Service	Other Service	Other Service	Other Service	Other Service	Other Service	Other Service	Other Service	Other Service	Other Service	Pharmacy First Service	Pharmacy First Service	Pharmacy First Service	
		BRC	CPUS	EBC	EHC	GFF	MVP	NRT	SHG	SIG	SIR	IPG	M	UTG	
Pharmacy B	31/01/2024		205		3	38	1	11	1	2		1	444	18	
Pharmacy C	31/01/2024		78			13		1				3	159	5	
Pharmacy D	31/01/2024		171		4	74		2		1		3	144	7	
Pharmacy E	31/01/2024		275		2	25		19	2			2	189	10	
Pharmacy F	31/01/2024	1	179		4	28		26	1	1		2	411	16	
Pharmacy I	31/01/2024		130		2	68		6	1	14	1	7	279	25	
Pharmacy J	31/01/2024		1										11	3	
Pharmacy K	31/01/2024		103	1	1	21		6		2		2	188	8	
Pharmacy L	31/01/2024		68	1	2	15		18				1	182	3	
Pharmacy M	31/01/2024		173		1	38	2	3					265	6	
Pharmacy N	31/01/2024		48		5	33		6				1	165		
Pharmacy O	31/01/2024		100		1	26		18	1				138	12	
Pharmacy P	31/01/2024		44			15		3					58	1	
Pharmacy R	31/01/2024		113	1	2	4		9					158	7	
Pharmacy S	31/01/2024		36		2	13		11		2			227	5	
Pharmacy T	31/01/2024		28		1	38		8	2				270	5	
Pharmacy U	31/01/2024		42			26		10					94	5	
Pharmacy V	31/01/2024		38			34		6					94	3	
Pharmacy W	31/01/2024		9			26		11					30		
Pharmacy X	31/01/2024		22		2	36		5		2			115	1	
Pharmacy Y	31/01/2024		17			9							70	1	
Pharmacy Z	31/01/2024		97			18		7		1			58	3	
Pharmacy AA	31/01/2024		38		1	19		7				3	32	2	
Pharmacy AB	31/01/2024		216			25		6		2			318	7	
Pharmacy AC	31/01/2024		89		2	14		7					127	5	
Pharmacy A	31/01/2024		21			106		4					96	5	